



35 HIGH STREET, SHRIVENHAM, OXFORDSHIRE, SN6 8AN

OFFERS IN REGION OF £550,000



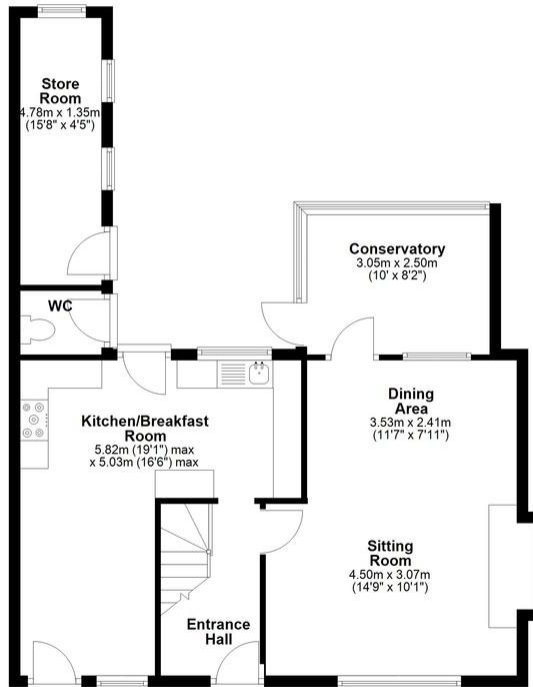
## 35 High Street, Shrivenham, Oxfordshire, SN6 8AN

Offered For Sale is this Four Bedroom Victorian Cottage in the middle of this Pretty Village High Street. The accommodation is arranged over three storeys and comprises; Entrance Hall, Large Sitting/Dining Room with an OPEN FIRE, Conservatory, Kitchen and Breakfast Area. To the first floor are Three Double Bedrooms and a Family Bathroom and there is a c.20' Master Bedroom with Walk-in-Wardrobe and views to the White Horse Hills to the Second floor. Outside is a large rear low maintenance garden with an outside WC and brick built storage shed. Parking is on street permit currently £110 per annum.



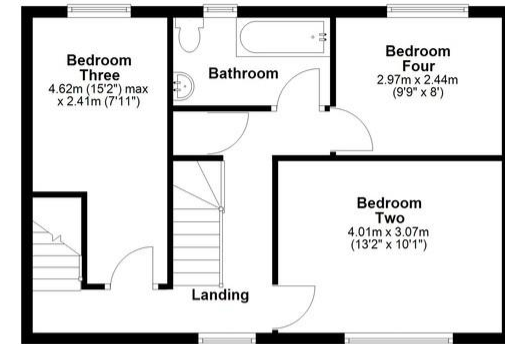
### Ground Floor

Main area: approx. 57.8 sq. metres (621.8 sq. feet)  
Plus outbuildings approx. 8.2 sq. metres (88.6 sq. feet)



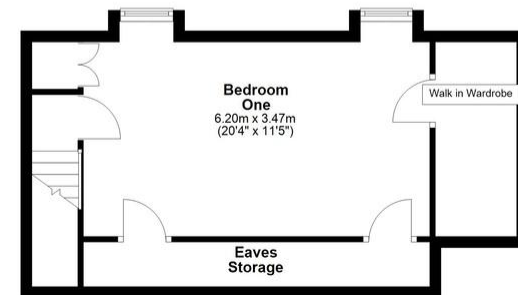
### First Floor

Approx. 47.5 sq. metres (511.0 sq. feet)



### Second Floor

Approx. 31.6 sq. metres (339.7 sq. feet)



Main area: Approx. 136.8 sq. metres (1472.5 sq. feet)  
Plus outbuildings, approx. 8.2 sq. metres (88.6 sq. feet)