



**Lime Cottage Lime Walk, Dibden Purlieu**  
**£995,000**





# Lime Cottage Lime Walk

Dibden Purlieu, Southampton

Nestled within a prime location and a 'leafy lane' setting, this picturesque detached residence exudes elegance, dating back to the 1930s. The property has undergone a series of pleasing improvements, preserving much of its original character and ensuring a harmonious blend of period charm and modern comforts.

Boasting spacious and flexible accommodation, this inviting home is designed for both relaxation and entertaining. The impressive open-plan kitchen/dining and living area serves as the heart of the residence, complemented by a separate lounge, family room, study, and utility room. With five generous bedrooms, including a master with ensuite and balcony, a family bathroom and a convenient ground floor WC, every family member's needs are met. There is also an easily accessible loft area offering potential for further enhancement or simply as useful storage.

The house is embraced by a generous, established plot extending to just over 0.3 acres. The gardens 'wrap-around' the property, creating various spots for outdoor enjoyment and al fresco entertaining.

Council Tax band: G

Tenure: Freehold



**1 Southward House**  
Dibden Purlieu SO45 4PT



**T: 02380 844405**

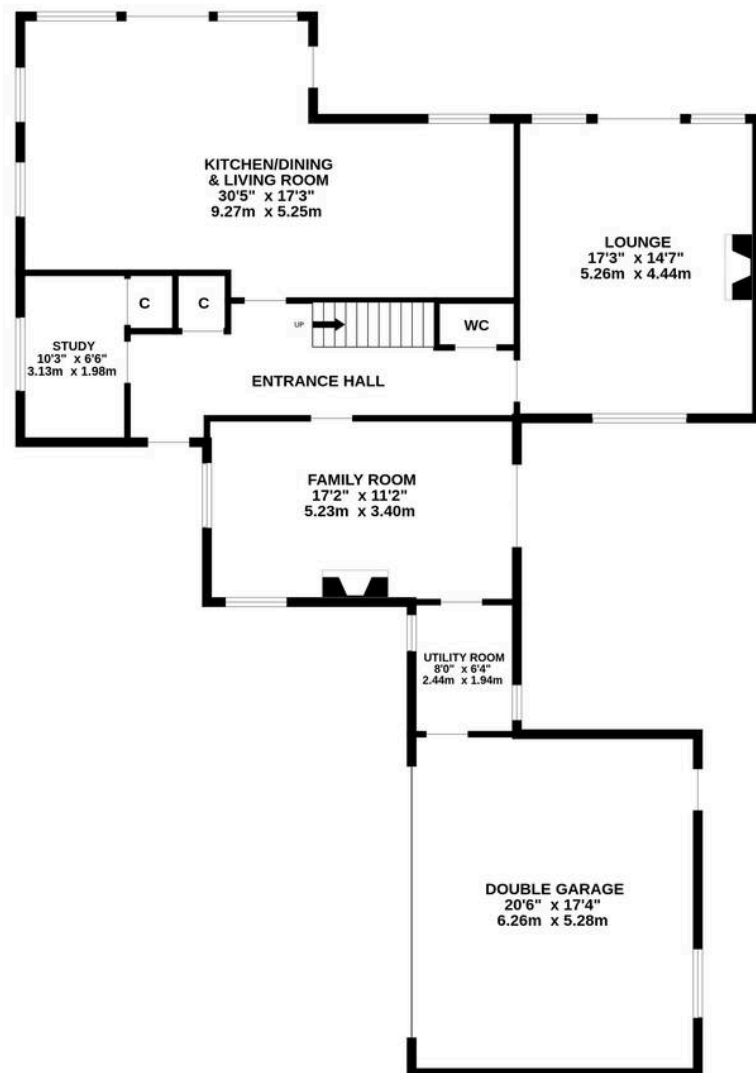
[info@anthonyjamesproperties.co.uk](mailto:info@anthonyjamesproperties.co.uk)







## GROUND FLOOR



## 1ST FLOOR

