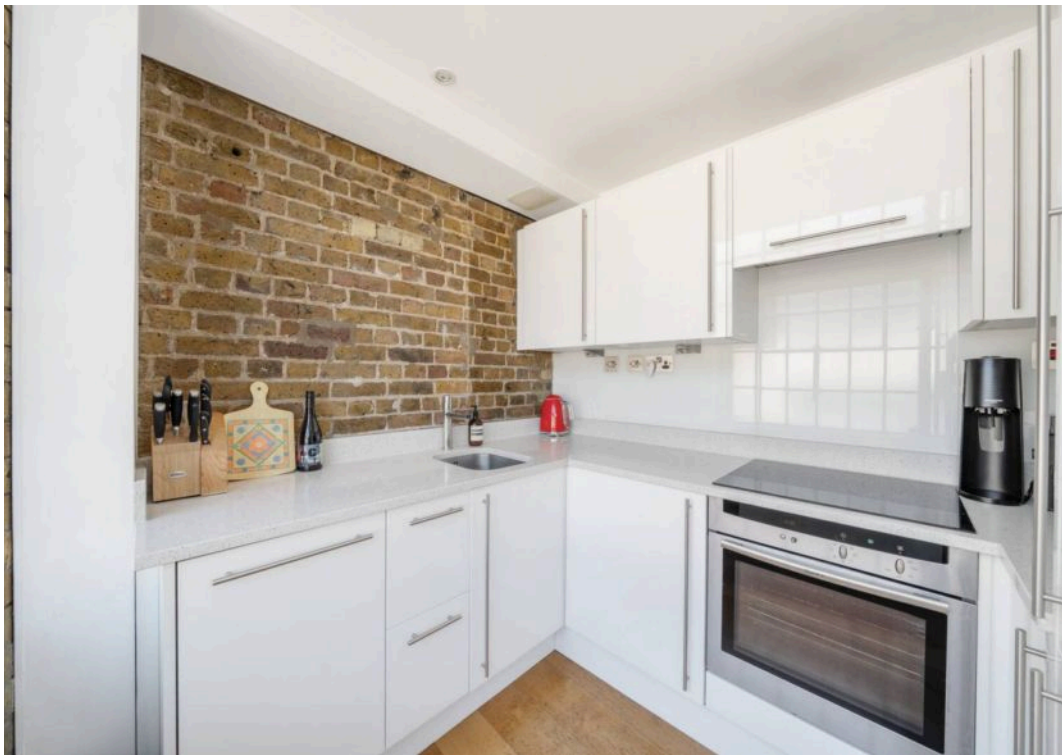
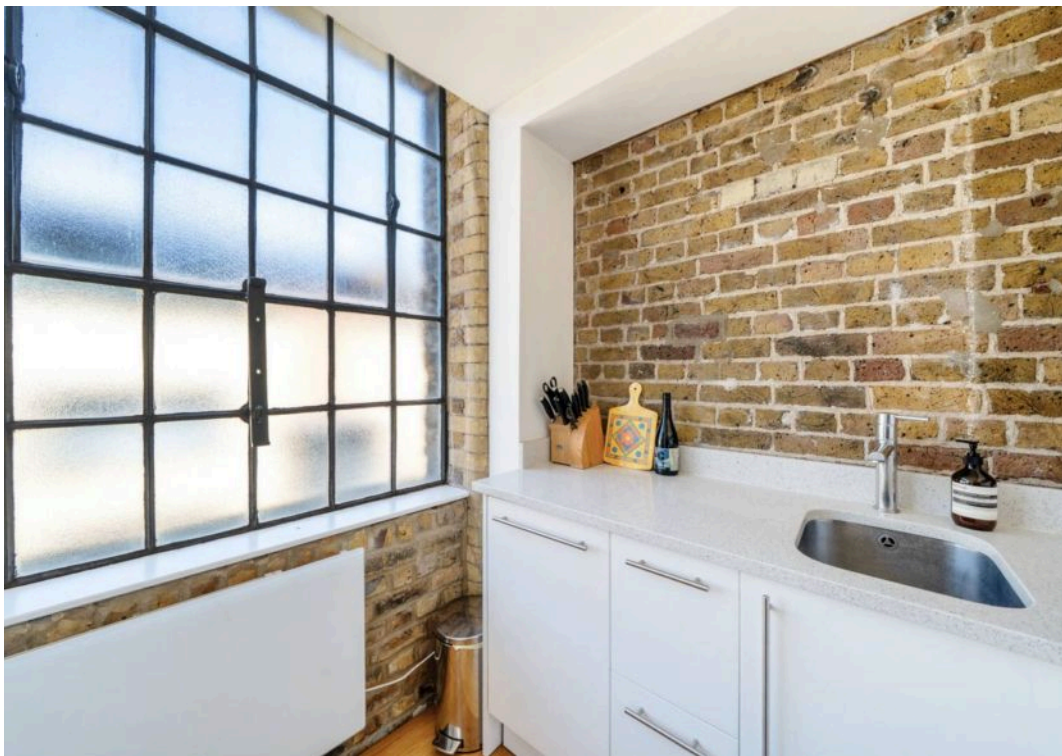


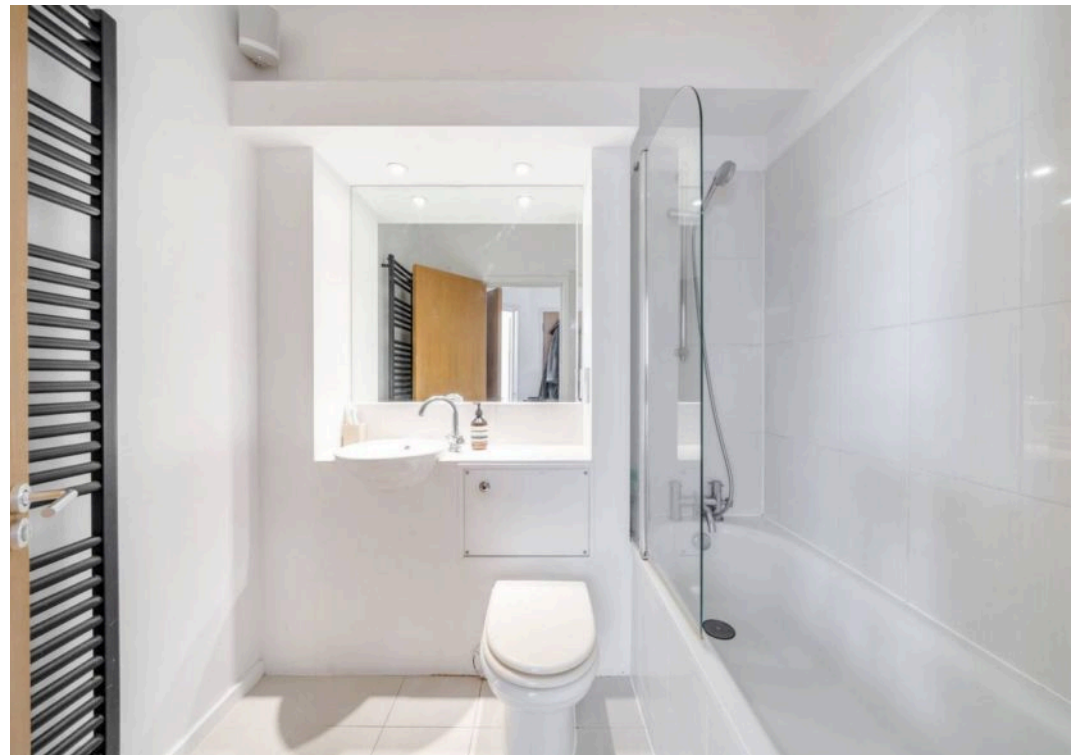
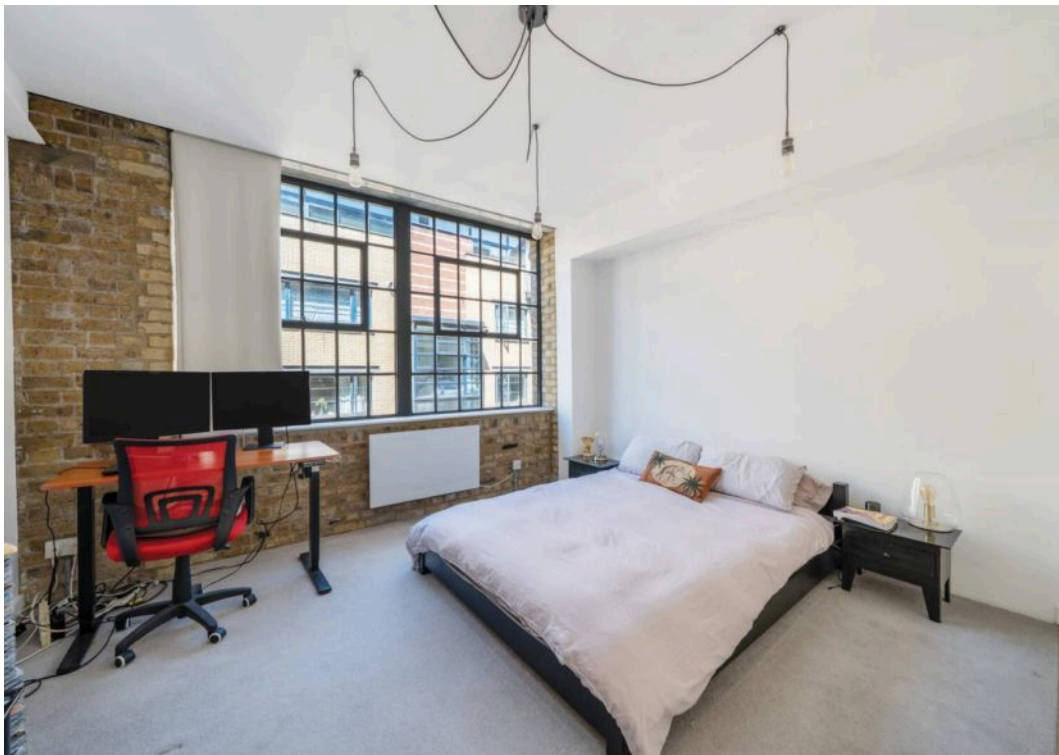
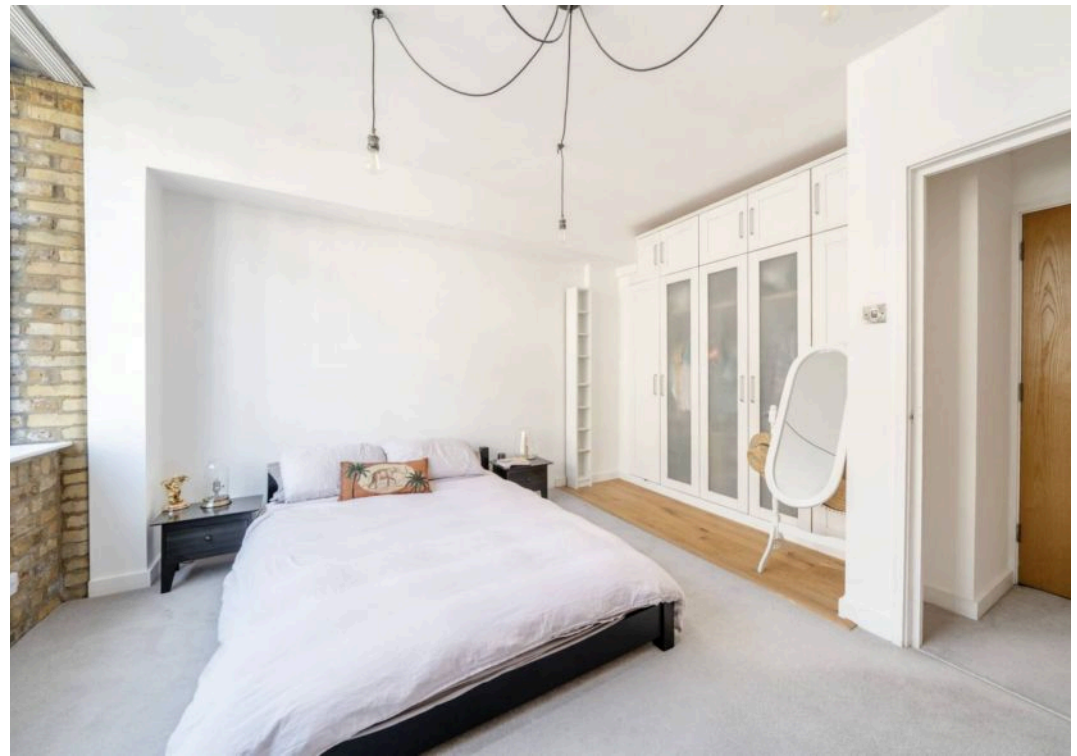
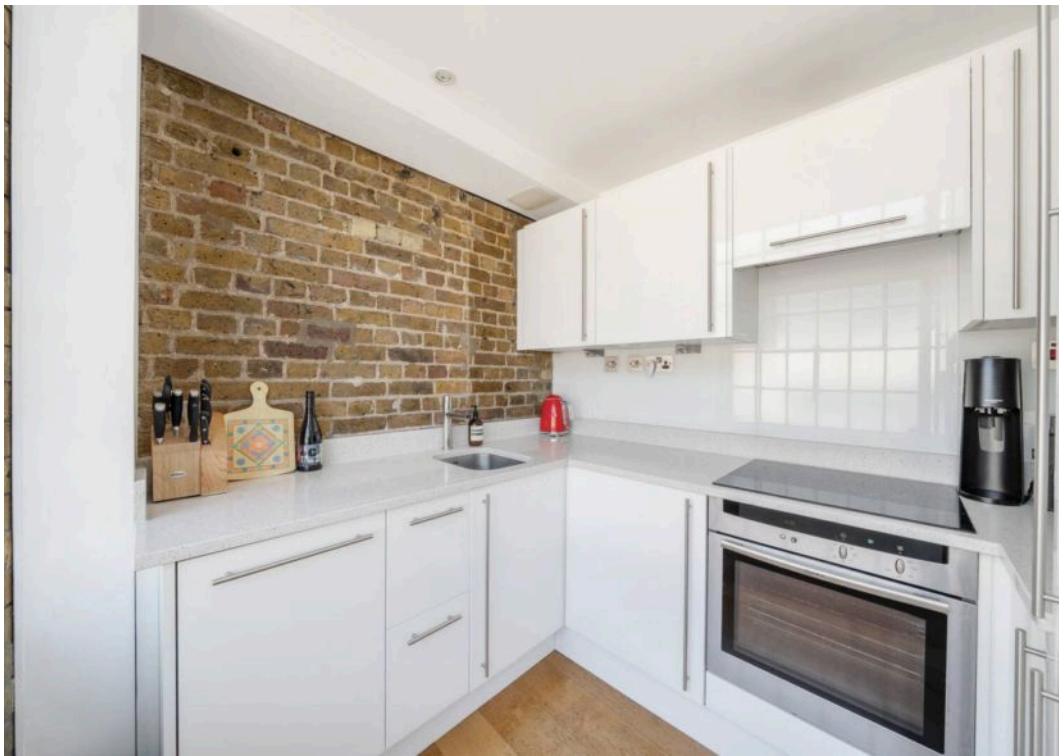


Tanners Yard, Long Lane, SE1

£625,000







Flat 36 and a half, Tanners Yard

239 Long Lane, London

A superbly presented one bedroom duplex apartment situated on the second and third floors of Tanners Yard, an iconic industrial conversion with the benefit of an allocated parking space in the underground garage.

Council Tax band: B

Tenure: Share of Freehold

EPC Energy Efficiency Rating: C

EPC Environmental Impact Rating: C

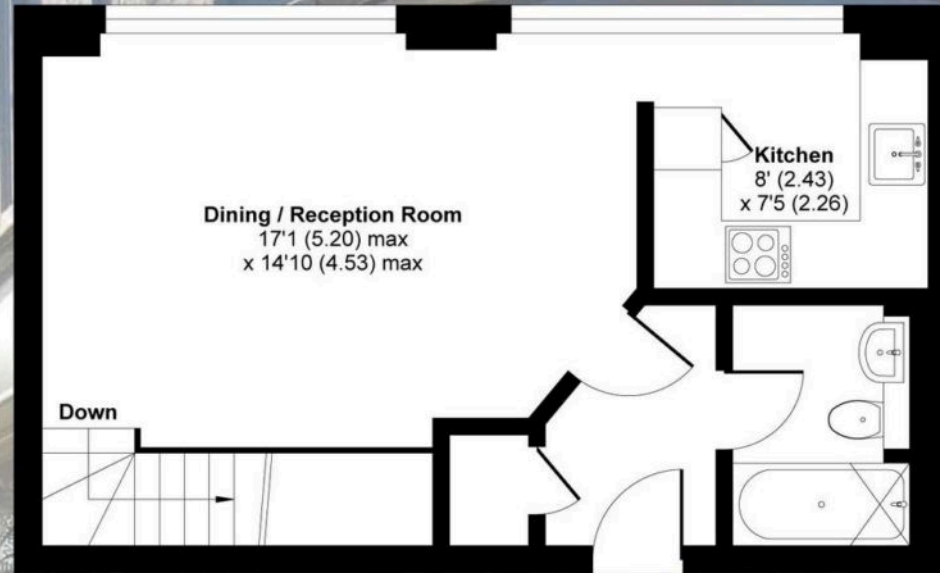
- Iconic warehouse development
- Exposed brick and industrial sized windows
- Daytime concierge
- Communal courtyard
- Parking space included in the underground garage
- Located at the rear of the main building, on the 2nd and 3rd floors
- Close to the fashionable and vibrant Bermondsey Street
- Welcoming communal hall with lift and stairs
- Well maintained development with Residents Association
- No onward chain



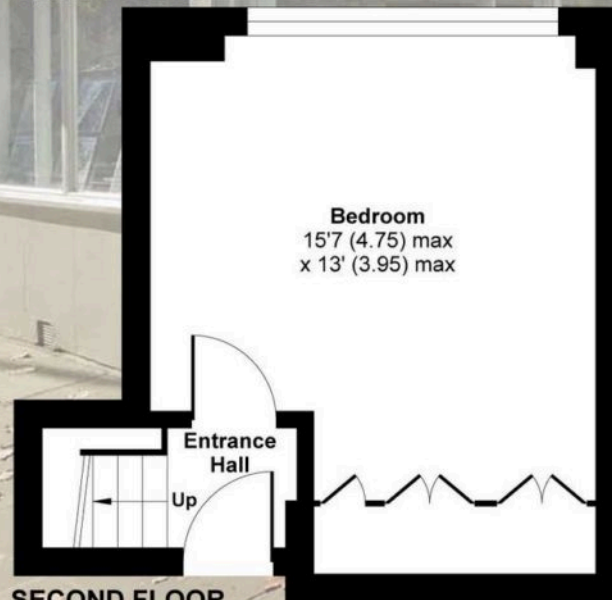
Long Lane, London, SE1

Approximate Area = 594 sq ft / 55.1 sq m

For identification only - Not to scale



THIRD FLOOR



SECOND FLOOR



Floor plan produced in accordance with RICS Property Measurement 2nd Edition, Incorporating International Property Measurement Standards (IPMS2 Residential). © n'checon 2025. Produced for Daniel Cobb. REF: 1313741



Daniel Cobb

Daniel Cobb Estate Agents, 82-84 Bermondsey Street – SE1 3UD

020 7357 0026 • londonbridge@danielcobb.co.uk • www.danielcobb.co.uk/