



Flat 20, Duchy Court, Harrogate

Harrogate

Guide Price £235,000



MYRINGS



Flat 20

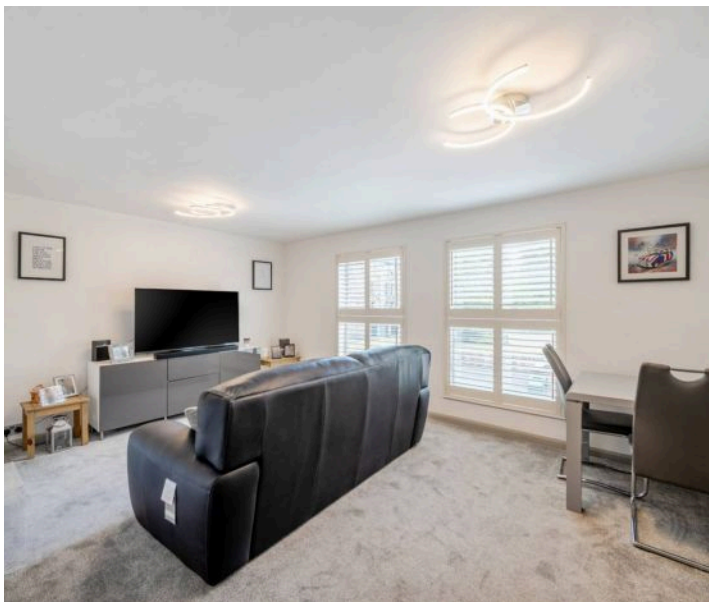
Duchy Court, Harrogate

A modern 2 bedroom ground floor flat presenting in immaculate order throughout forming part of a sought after purpose built development of flats set within well maintained communal gardens and having the advantage of a large tandem garage, located only a short walk from Cold Bath Road, Harrogate's town centre & the Beech Grove Stray parkland.

Council Tax band: C

Tenure: Leasehold

- CLOSE TO THE BEECH GROVE STRAY PARKLAND
- COMMUNAL GARDENS
- LARGE TANDEM DOUBLE GARAGE
- MODERN INTERIORS
- LEAFY VIEWS OVER THE COMMUNAL GROUNDS



MYRINGS



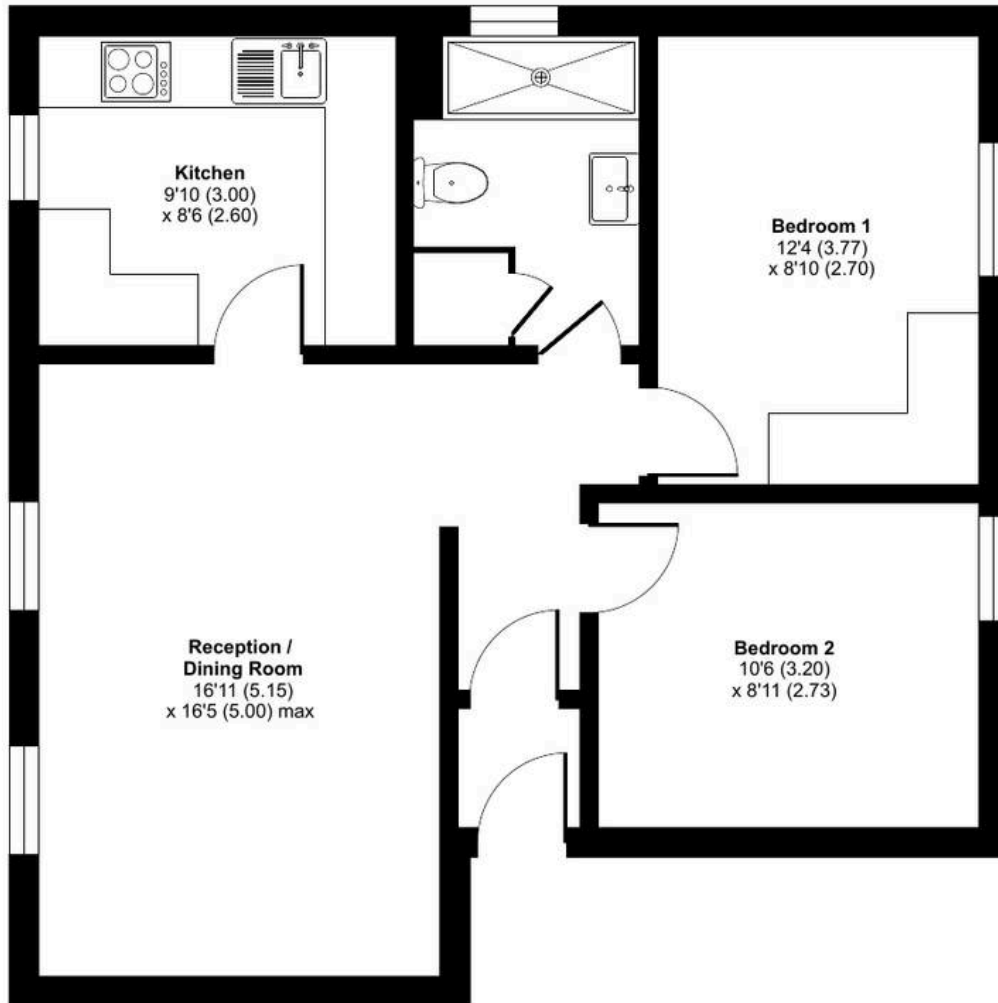
Duchy Court, Otley Road, Harrogate, HG2

Approximate Area = 611 sq ft / 56.7 sq m

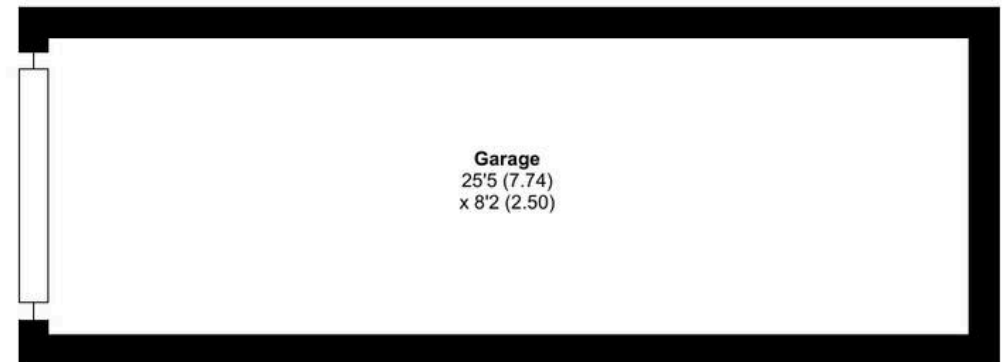
Garage = 208 sq ft / 19.3 sq m

Total = 819 sq ft / 76 sq m

For identification only - Not to scale

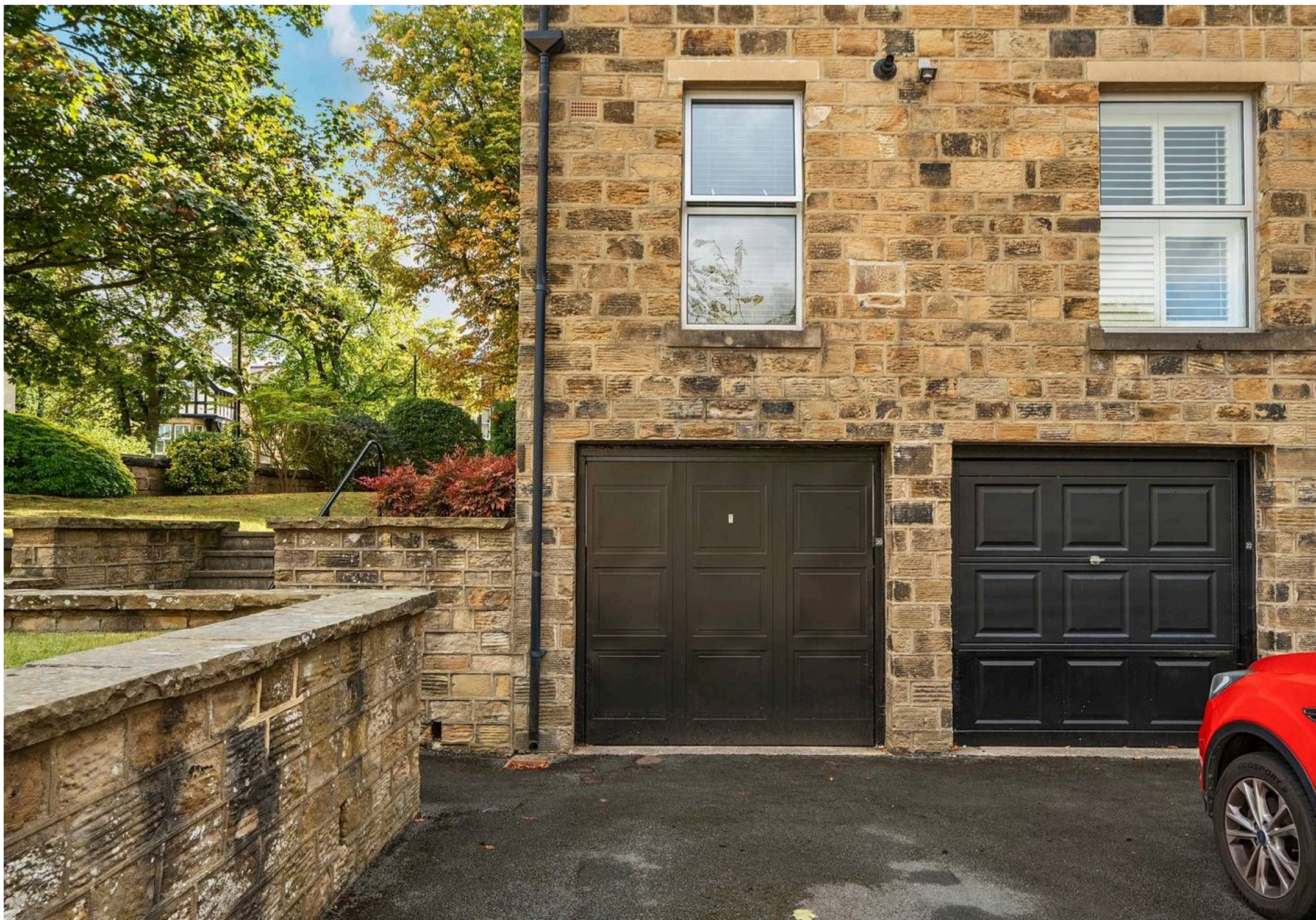


GROUND FLOOR



Garage
25'5 (7.74)
x 8'2 (2.50)







Myrings Estate Agents

Myrings Estate Agents Ltd, 10 Princes Square - HG1 1LX

01423

566400

▪ enquiries@myringsestateagents.com ▪ <http://myringsestateagents.com/>

