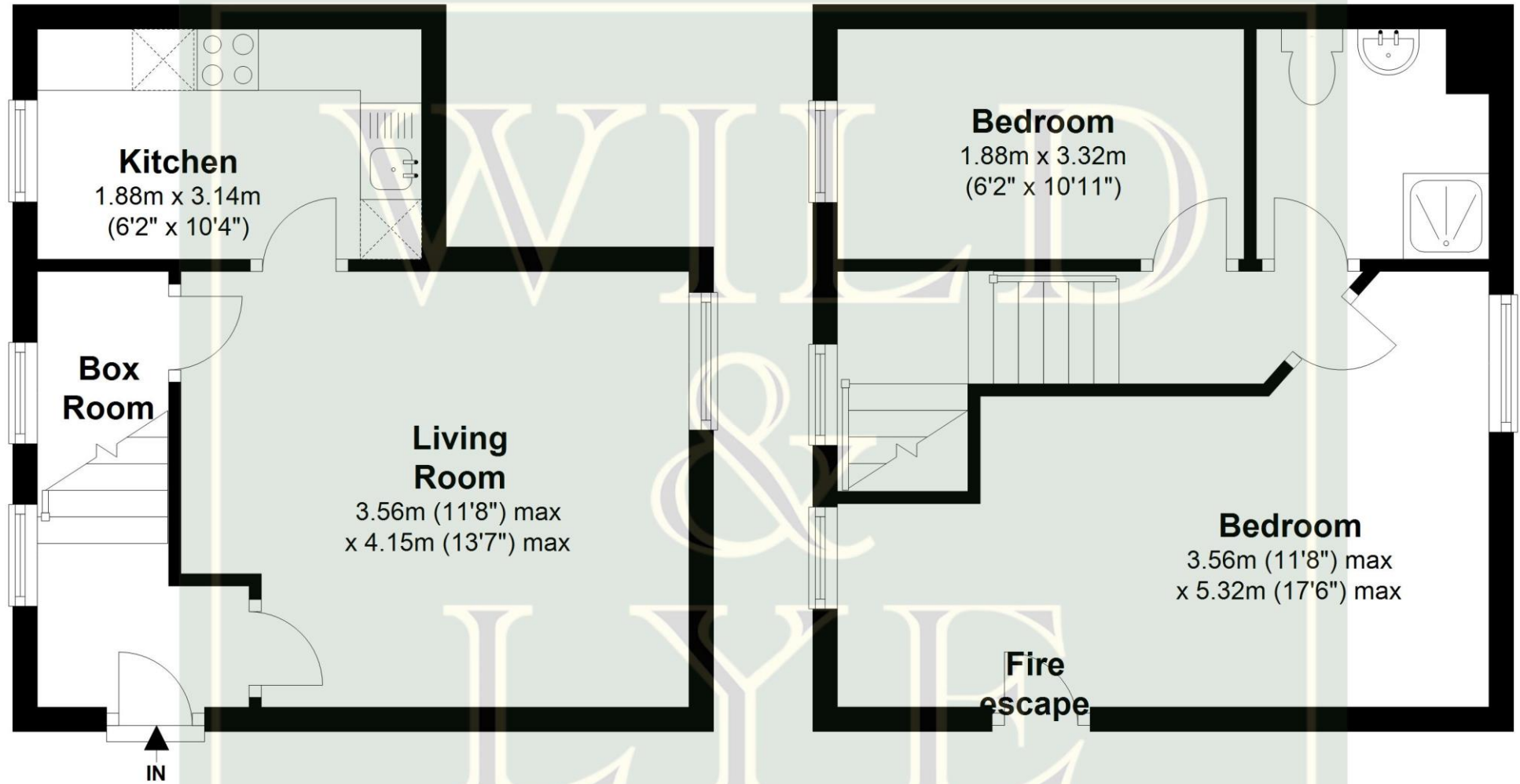




Apartment 2, 9 Bathwick Street, Bath BA2 6LH

**To Let** - £1,450 pcm

**Unfurnished two bedroom maisonette** (first and second floors with no neighbours above or below) with private off-road parking space to the rear. Centrally located Georgian-style townhouse with all the benefits of modern construction - built in the early 1990's.



**Ref: L065 - First Floor**

Approx. 25.2 sq. metres (270.8 sq. feet)

**Ref: L065 - Second Floor**

Approx. 28.4 sq. metres (305.6 sq. feet)



Gas central heating | Kitchen with electric hob, extractor hood, built-in oven, washing machine and fridge | Shower Room | Allocated parking space | Council Tax Band C

Score	Energy rating	Current	Potential
92+	A		
81-91	B		
69-80	C	76 C	80 C
55-68	D		
39-54	E		
21-38	F		
1-20	G		

Important Notice 1. Particulars: These particulars are not an offer or contract, nor part of one. You should not rely on statements by Wild & Lye in the particulars or by word of mouth or in writing ("information") as being factually accurate about the property, its condition or its value. Neither Wild & Lye nor any joint agent has any authority to make any representations about the property, and accordingly any information given is entirely without responsibility on the part of the agents, seller(s) or lessor(s). 2. Photos etc: The photographs show only certain parts of the property as they appeared at the time they were taken. Areas, measurements and distances given are approximate only. 3. Regulations etc: Any reference to alterations to, or use of, any part of the property does not mean that any necessary planning, building regulations or other consent has been obtained. A buyer or lessee must find out by inspection or in other ways that these matters have been properly dealt with and that all information is correct.

Viewing by appointment with Wild & Lye | 01225 443322 | [www.wildandlye.com](http://www.wildandlye.com)



WILD & LYE

WILD & LYE  
STORAGE  
STORAGE

STORAGE  
STORAGE

020 8122 4429

WILD & LYE  
STORAGE  
STORAGE