

6 Boothstown Drive, Worsley

Offers in Region of **£650,000**

6 Boothstown Drive

Worsley, Manchester

Millbrooke Estate Agents are delighted to offer for sale this beautifully presented, four-bedroom detached property. The property is offered for sale, complete with the freehold and benefits from uPVC double glazing throughout, gas central heating, and is fully alarmed. Ideally situated on the popular Boothstown Drive and just a stone's throw from the picturesque Bridgewater Canal. A short stroll along the canal, you will have direct access to the RHS Bridgewater Gardens and continuing along the canal into the historic Worsley Village. Just a short walk from two excellent primary schools, local shops, bars, restaurants, and family pubs. Transport links by both bus and car to all surrounding towns, just a few minutes to the M60 Ring Road, and the A580 East Lancashire Road.

Council Tax band: E

Tenure: Freehold

- Superb prime Boothstown location
- A spacious four bedroom detached
- Substantially extended to the rear elevation
- Driveway parking and garage storage
- Offered for sale with the freehold
- Excellent transport links nearby
- Many local amenities inc bars and restaurants
- Just a short walk to the Bridgewater Canal
- Immaculately presented throughout
- Early internal viewing is highly recommended



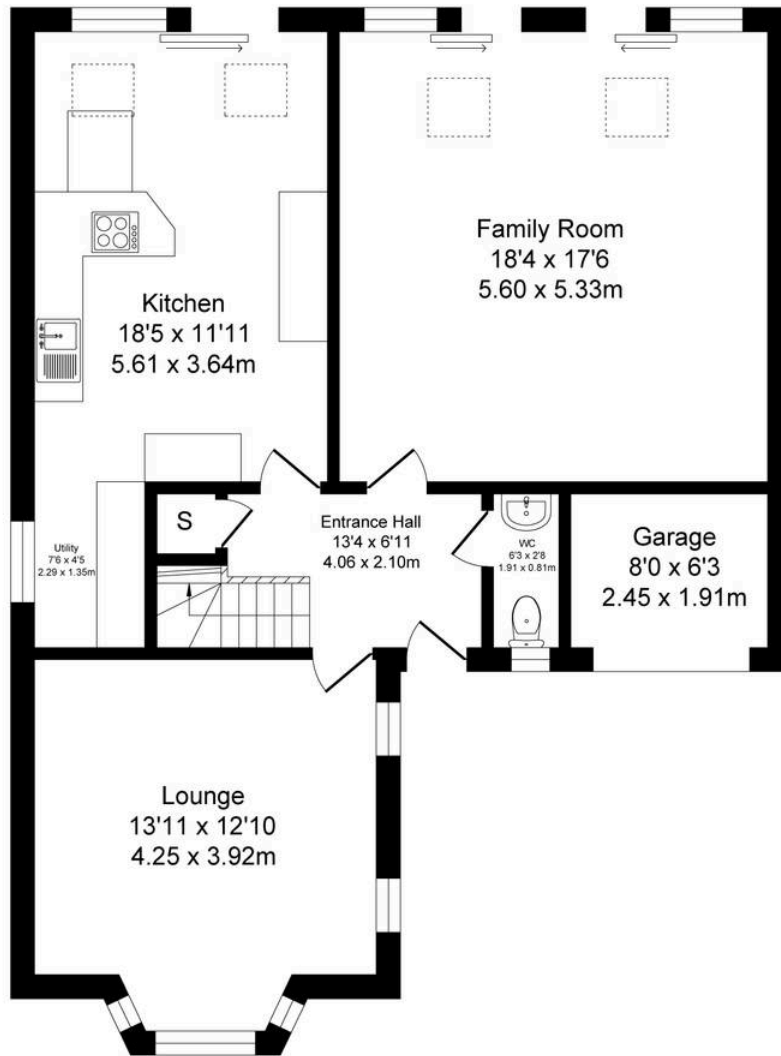




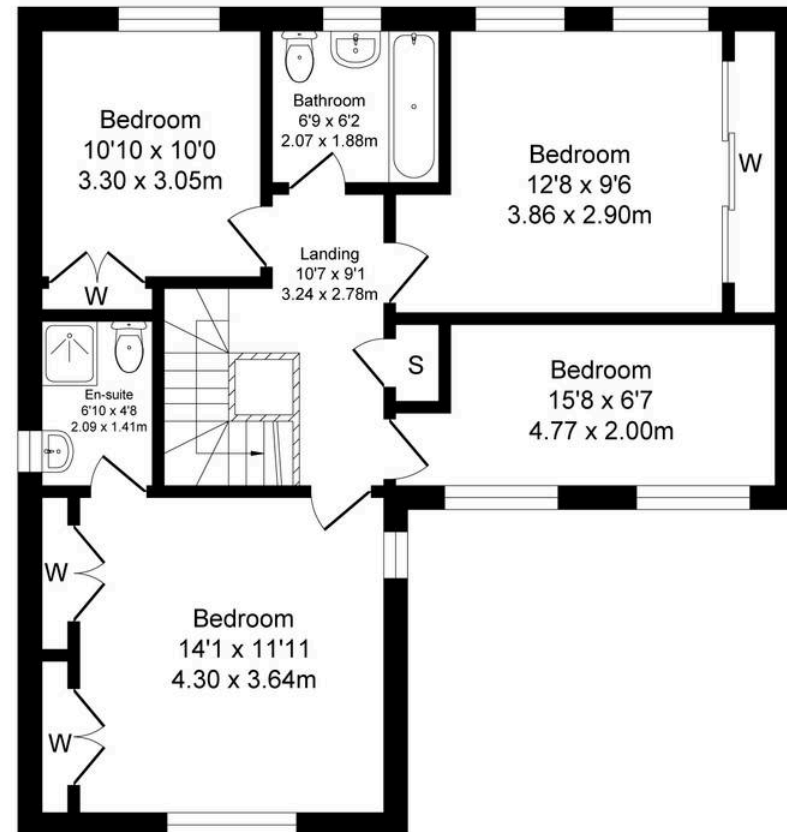
Boothstown Drive Worsley

Total Approx. Floor Area 1693 Sq.ft. (157.2 Sq.M.)

Surveyed and drawn by Lens Media for illustrative purposes only. Not to scale. Whilst every attempt was made to ensure the accuracy of the floor plan, all measurements are approximate and no responsibility is taken for any error.



Ground Floor
Approx. Floor
Area 952 Sq.Ft
(88.4 Sq.M.)



First Floor
Approx. Floor
Area 741 Sq.Ft
(68.8 Sq.M.)



Millbrooke Estate Agents

271 Mosley Common Road, Worsley, Manchester - M28 1BZ

0161 790 5154 • hello@millbrooke.co • millbrooke.co

