



16 Marsh Way, Larkfield

Guide Price £400,000

eden
estates

16 Marsh Way

Larkfield, Aylesford

GUIDE £400,000-£440,000, 3/4 Bed Semi-Detached in Larkfield offers a spacious corner plot, potential for extension (STPP),. Ample off-street parking & garage. Great potential to enhance a family home. Council Tax band: D

Tenure: Freehold

- Generous CORNER PLOT with scope for further extension (STPP)
- 3/4 Bedroom Semi Detached house
- Off street parking for 4 cars
- Garage
- 21ft Fully fitted kitchen
- Lounge, dining room, study//bedroom 4
- Family bathroom & downstairs shower room
- Very popular Larkfield location
- Wonderful family home



eden
estates

Sitting room
15' 10" x 11' 6" (4.82m x 3.50m)

Kitchen
21' 4" x 7' 3" (6.50m x 2.20m)

Dining room
10' 10" x 8' 5" (3.30m x 2.56m)

Bedroom/Study
8' 5" x 7' 2" (2.56m x 2.18m)

En-suite

Bedroom 1
12' 0" x 10' 0" (3.67m x 3.05m)

Bedroom 2
10' 3" x 10' 0" (3.13m x 3.04m)

Bedroom 3
7' 3" x 6' 3" (2.20m x 1.90m)

Bathroom
7' 2" x 5' 7" (2.18m x 1.69m)



eden
estates



GARDEN

GARAGE

Double Garage

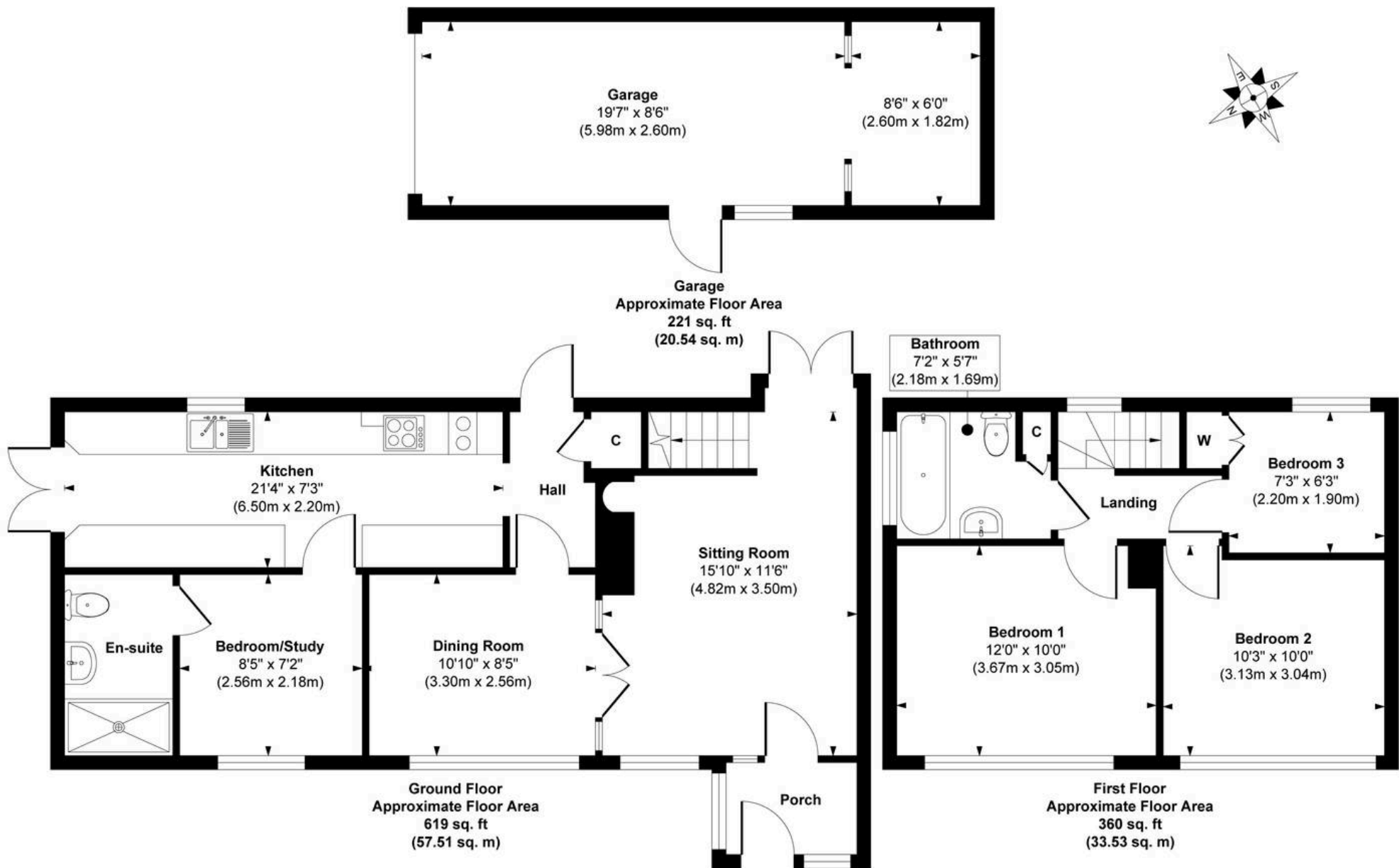
Garage & parking at the rear of the house

DRIVEWAY

2 Parking Spaces



16 Marsh Way



Approx. Gross Internal Floor Area 1200 sq. ft / 111.58 sq. m (Including Garage)

Illustration for identification purposes only, measurements are approximate, not to scale.



Eden Estates

781-783 London Road, Larkfield - ME20 6DE

01732 795162

hey@eden-estates.co.uk

www.eden-estates.co.uk



eden
estates