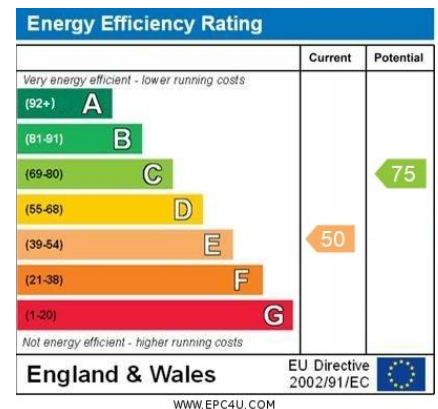
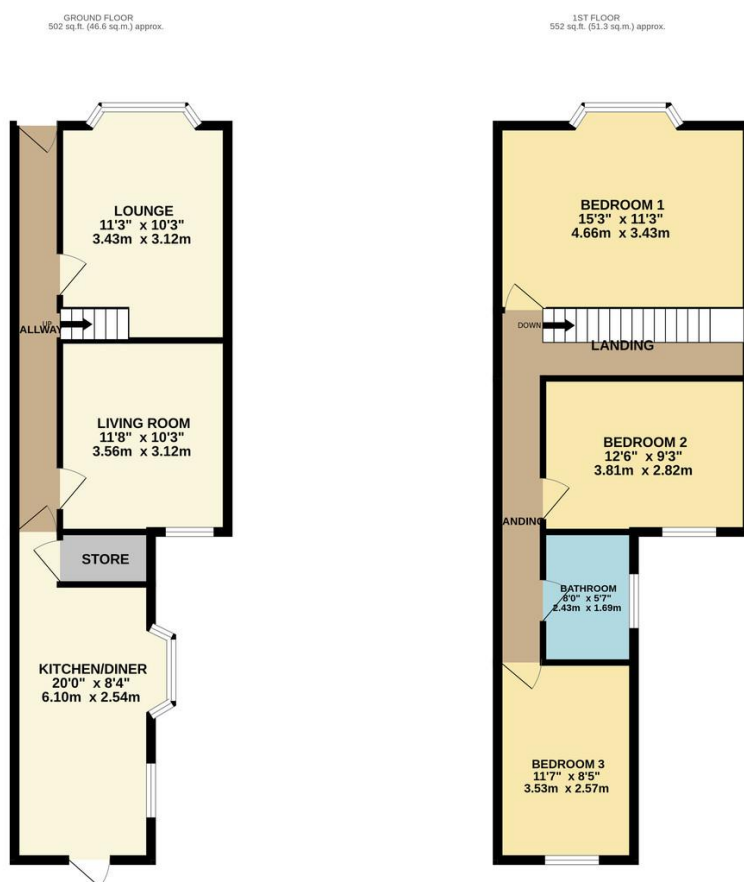




FOR SALE

3 Bed Mid Terraced House in Cambridge Street, Leicester LE3 0JR
£200,000

Sold with no upward chain: Spacious three bedroom, bay fronted, palisaded mid terrace available for sale on the upper section of Cambridge Street in Leicester's West End. Offering fantastic potential for an investor or residential buyer alike, the property comprises entrance hall with period tiled flooring, two reception rooms, kitchen diner and store downstairs, together with three double bedrooms and bathroom upstairs. The property is situated within easy distance to Leicester Royal Infirmary, DMU and city centre. An opportunity for a discerning buyer.



- Bay Fronted Mid Terrace
- Palisaded
- Three Double Bedrooms
- Entrance Hall
- Two Reception Rooms
- Kitchen Diner
- Low Maintenance Yard To Rear
- Some Period Features

Agents Note: Whilst every care has been taken to prepare these sales particulars, they are for guidance purposes only. All measurements are approximate and are for general guidance purposes only and whilst every care has been taken to ensure their accuracy, they should not be relied upon and potential buyers are advised to recheck the measurements.

