



Brockworth Cottage, Spine Road West, Ashton Keynes – SN6 6QT
Ashton Keynes

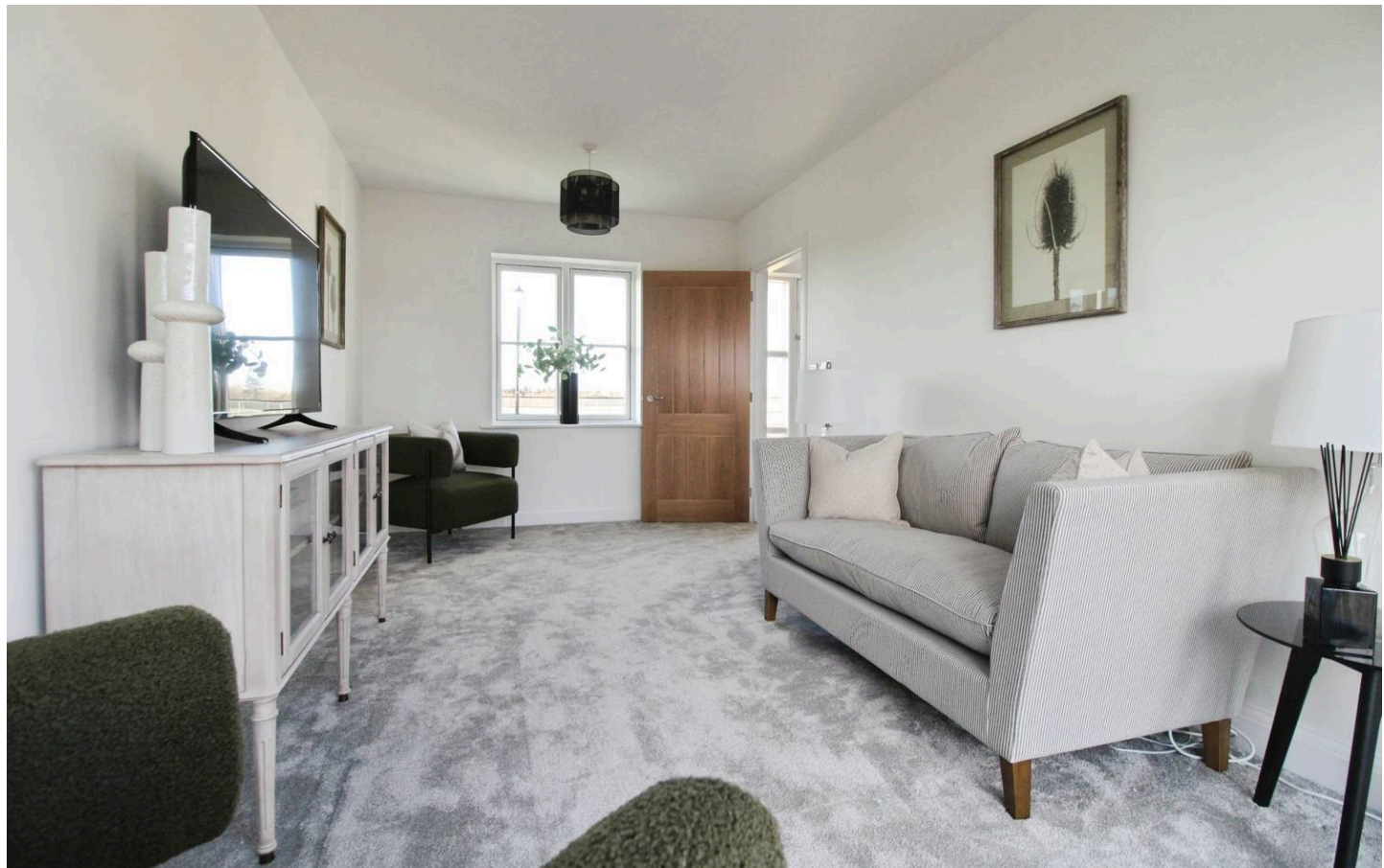
£350,000
mcfarlane
property.com

Brockworth Cottage, Spine Road West

Ashton Keynes

- For one week only, from 10am on Saturday, 22nd November until Sunday, 30th November at 5pm, you have the opportunity to take advantage of incredible limited-time offer
- WAS £425,000 | NOW £350,000
- DESIGNER KITCHEN WITH ELEGANT STONE WORKTOPS AND INTEGRATED APPLIANCES
- 2 BEDROOM COTTAGE
- ENVIABLE VIEWS ACROSS GREEN OPEN SPACE
- PRINCIPAL BEDROOM WITH BUILT IN WARDROBES AND EN-SUITE
- TWO ALLOCATED PARKING SPACES
- ELECTRIC VEHICLE CHARGING POINT
- PHOTOVOLTAIC (PV) PANELS
- PREMIUM FLOORING INCLUDED THROUGHOUT
- PART EXCHANGE SCHEME AVAILABLE

"Exquisite 2 Bed Mid-Terraced House in a desirable location. Ready to move in with modern luxury and classic charm. Designer kitchen, enviable views, allocated parking, PV panels, premium flooring, garden space. Don't miss out - book a viewing today!"



Brockworth Cottage, Spine Road West

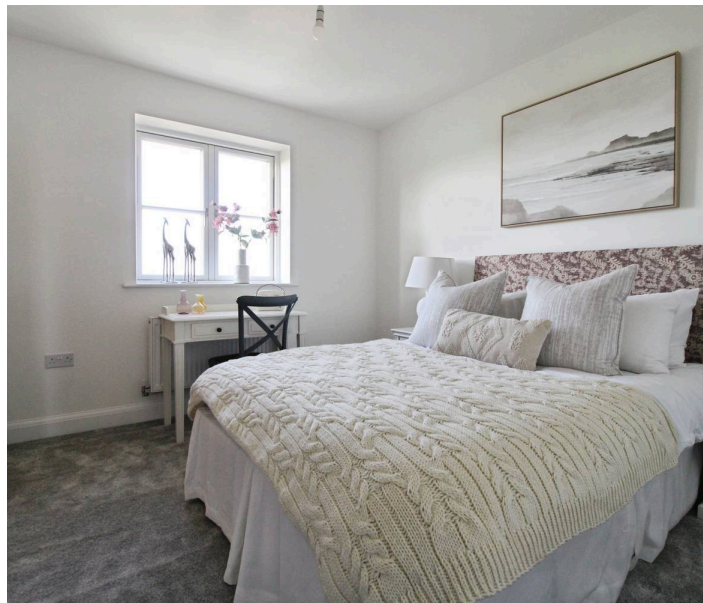
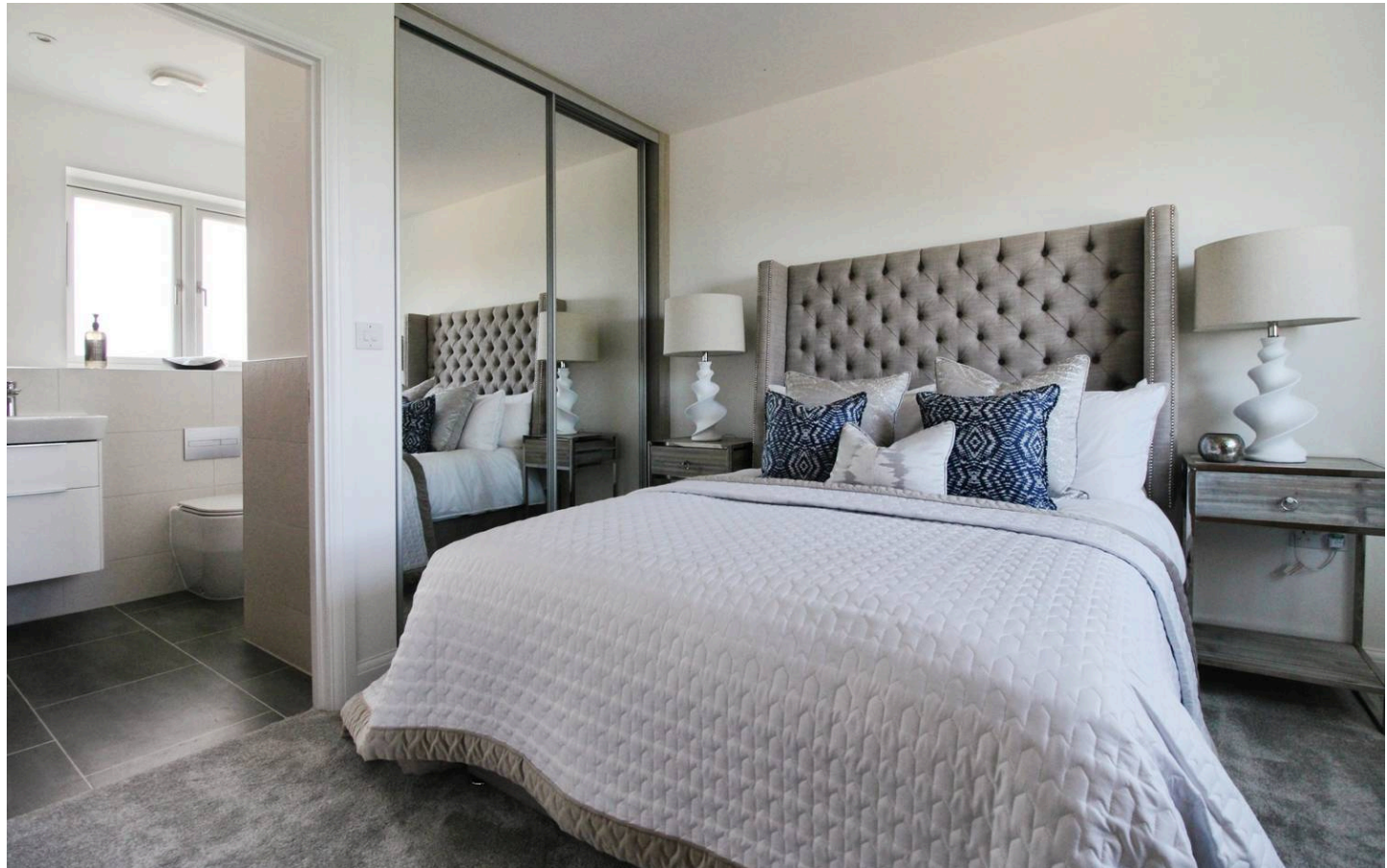
Ashton Keynes

A warm welcome awaits in Ashton Keynes, a small village with a big heart. Be part of this thriving community and join in with the many clubs and sports groups available at the Village Hall and Bradstone Playing Field. Pick up your daily essentials from the well-stocked Community Shop, relax in the local pub or enjoy home cooked food at Jennie's Kitchen. Once part of a royal forest, this ancient village between Cricklade and Cirencester is defined by the lovely River Thames. Families and friends will love the Ashton Keynes Festival, cheering the annual duck race or walking the picturesque Thames Path through unspoiled countryside.

Council Tax band: TBD

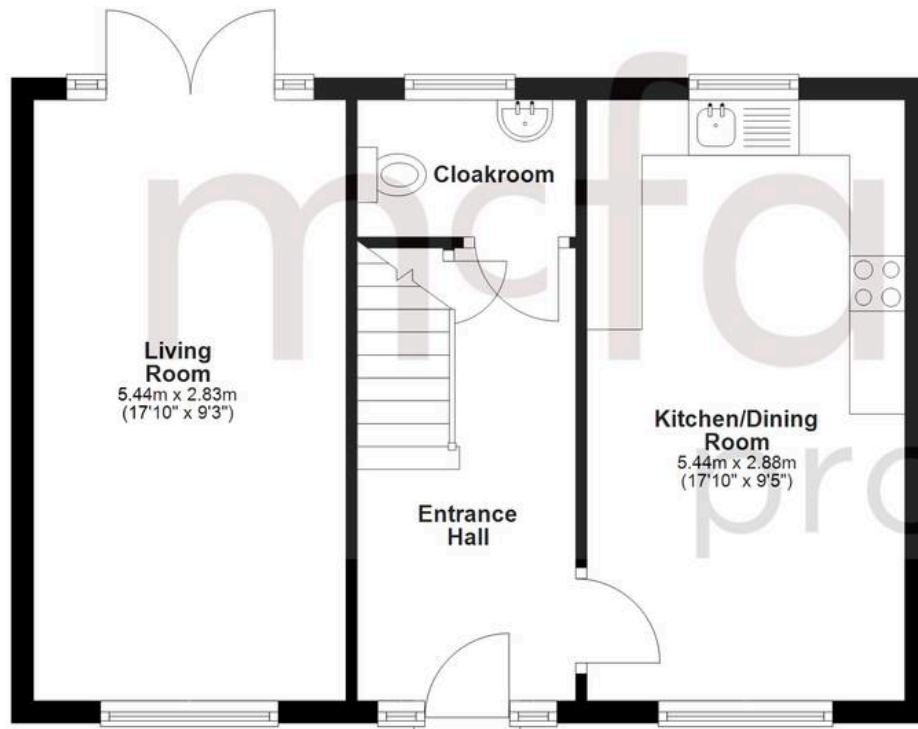
Tenure: Freehold

mcfarlane
property.com



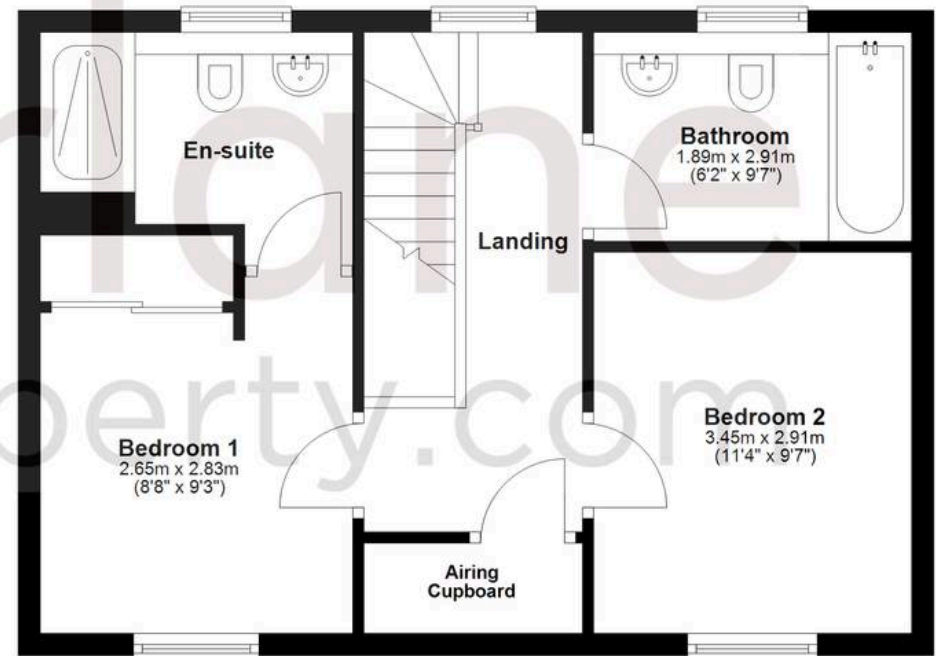
Ground Floor

Approx. 42.9 sq. metres (462.0 sq. feet)



First Floor

Approx. 43.5 sq. metres (468.4 sq. feet)



Total area: approx. 86.4 sq. metres (930.4 sq. feet)

Agents Note: Whilst every care has been taken to prepare these sales particulars, they are for guidance purposes only. All measurements are approximate and for general guidance purposes only and whilst every care has been taken to ensure their accuracy, they should not be relied upon and potential buyers are advised to recheck the measurements.