



Littledale Littledales Lane

Hartford, Northwich

- Detached Dormer Bungalow
- 0.68 Acre Plot
- Mature Gardens And Woodland
- Three/Four Bedroom
- Two Reception Rooms
- Kitchen & Utility Room
- Two Bath/Shower Rooms
- Double Garage And Extensive Parking

Presenting this exquisite detached dormer bungalow set on a generous 0.68-acre plot enveloped by mature gardens and woodland. Boasting three/four bedrooms, this home offers ample space for family living. The property features two reception rooms, providing versatile options for entertainment and relaxation. A well-appointed kitchen and utility room add to the practicality of the residence.

Elegance meets functionality with two bath/shower rooms ensuring convenience for residents. With a double garage and extensive parking available, this home provides convenience for multiple vehicles.

Nestled within the tranquil surroundings of the mature gardens and woodland, this property offers a peaceful retreat. Whether enjoying the scenic views or entertaining guests in the spacious living areas, this home presents a harmonious blend of comfort and style.



Littledale Littledales Lane

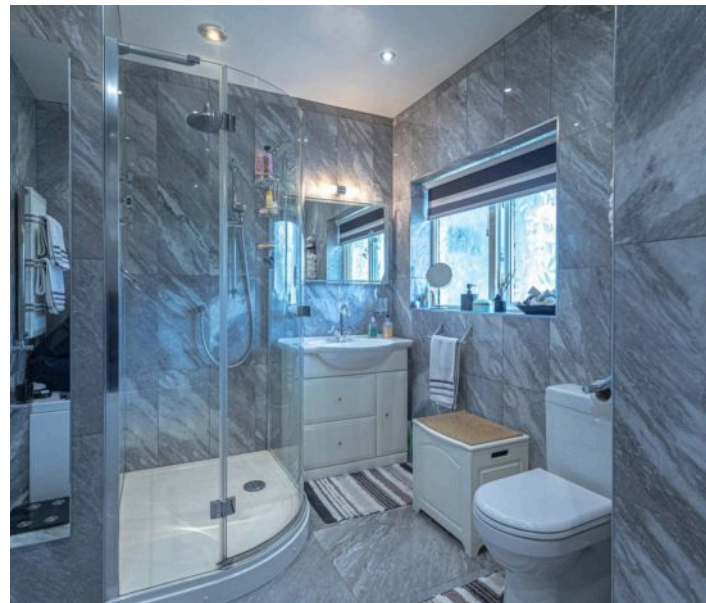
Hartford, Northwich

Hartford is a bustling Cheshire village with an excellent range of local facilities including a hub of shops at its centre, offering everything you could want or need. There are three public house's in the village, The Red Lion, The Coachman and Hartford Hall Hotel, in addition there are two wine bars/bistros; Chime, located in the heart of the village and The Hart of Hartford, which is located on School Lane. Two railway stations serve the village with the West Coast Main Line service running through Hartford, enabling access to London within two hours. Trains to Manchester and Chester run from Greenbank station. The A556 and A49 easily facilitate access to the region's major road network with Manchester and Liverpool airports both within 20 miles. Above all, where Hartford really excels is its range of excellent schools, the well regarded Grange private school is less than a mile away and both Hartford High and St Nicholas Catholic High School are within walking distance as are the four village primary schools; Hartford Primary School, St Wilfred's Catholic Primary School, Hartford Manor Community School and the private Grange primary School. Nearby Northwich caters for a more comprehensive range of amenities, including leading supermarkets with Waitrose, Sainsbury's and Tesco all represented.

Council Tax band: TBD

Tenure: Freehold

- Detached Dormer Bungalow
- 0.68 Acre Plot
- Mature Gardens And Woodland
- Three/Four Bedroom
- Two Reception Rooms
- Kitchen & Utility Room
- Two Bath/Shower Rooms
- Double Garage And Extensive Parking



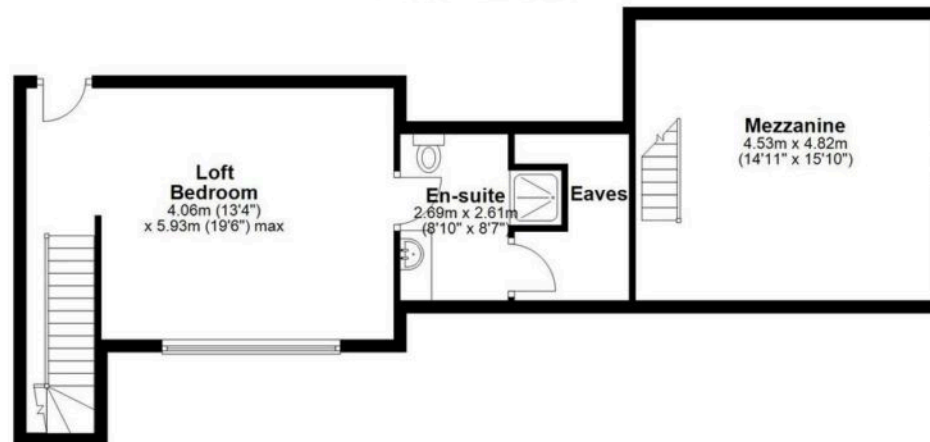
Ground Floor

Main area: approx. 150.7 sq. metres (1622.4 sq. feet)
Plus garages, approx. 32.4 sq. metres (348.4 sq. feet)



First Floor

Main area: approx. 36.0 sq. metres (387.4 sq. feet)
Plus garages, approx. 21.8 sq. metres (235.1 sq. feet)



Main area: Approx. 186.7 sq. metres (2009.8 sq. feet)
Plus garages, approx. 54.2 sq. metres (583.5 sq. feet)



Williams Estates

33 The Green, Hartford - CW8 1QA

01606 331784

info@westates.co.uk

www.westates.co.uk/#/



These particulars, whilst believed to be accurate are set out as a general outline only for guidance and do not constitute any part of an offer or contract. Intending purchasers should not rely on them as statements of representation of fact, but must satisfy themselves by inspection or otherwise as to their accuracy. All measurements quoted are approximate. We are unable to confirm the working order of any fixtures and fittings including appliances that are included in these particulars. No person in this firm's employment has the authority to make or give any representation or warranty in respect of the property. Williams Estates is the trading name of Williams Estates (Ltd). Registered address 33, The Green, Hartford, Northwich, Cheshire, CW8 1QA. Reg number 07682683. Director Andrew P Williams