



## **3 Bedroom Apartment Hollyfield Road, Surbiton. £599,950 Share of Freehold / Leasehold 999 years**

Foyle Court, a brand new boutique development of just 7 luxury homes.

This 3 bedroom apartment is located on the Ground floor of Foyle Court and boasts, 802 sq ft of internal living space with a private terrace.

An exclusive development of just 7 brand new apartments ideally situated on Hollyfield Road, directly opposite Fishponds Conservation area, a haven and tranquil retreat with parkland, ponds and wildlife.

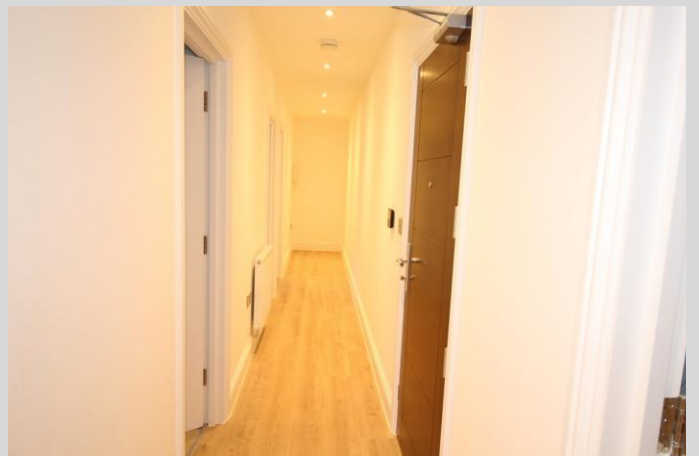
All 7, high specification apartments have been finished to an exemplary standard and are located within a short walk to Surbiton Station with frequent high speed trains, taking just 19 minutes to London Waterloo.

Please note floorplans and images are for illustration purposes only, some images are taken of a previous development.

[WWW.STACKANDBONNER.COM](http://WWW.STACKANDBONNER.COM)

020 8974 8844

[sales@stackandbonner.com](mailto:sales@stackandbonner.com)



Foyle Court,  
Hollyfield Road, KT5  
Approximate Gross Internal Area  
74.50 sq m / 802 sq ft

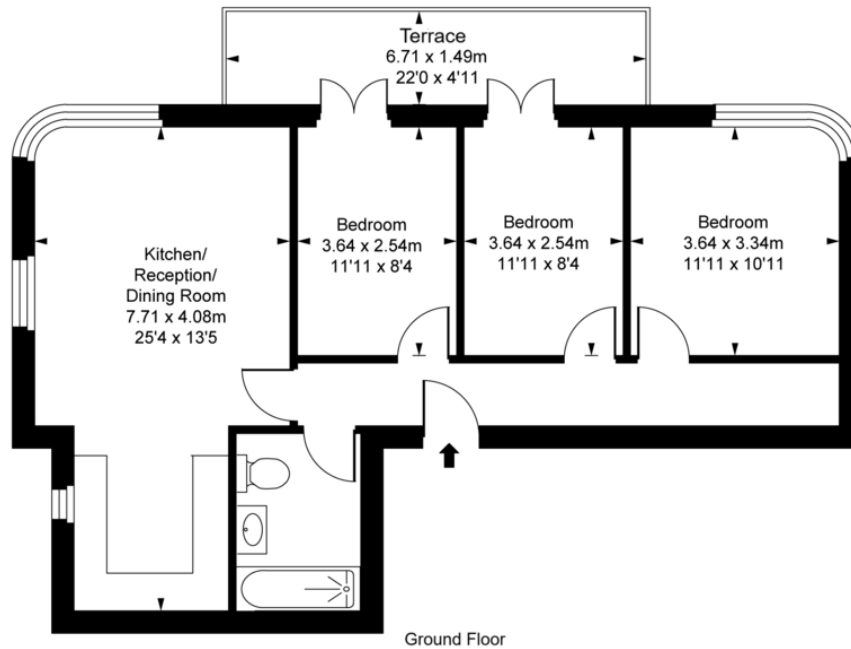


ILLUSTRATION FOR IDENTIFICATION PURPOSES ONLY  
ALL MEASUREMENTS AND AREA FIGURES SUPPLIED BY OTHERS, ACCURACY IS NOT GUARANTEED.  
THIS PLAN MUST NOT BE REPRODUCED BY ANY OTHER PERSON WITHOUT PERMISSION

- 3 Bedroom Apartment
- Brand New Boutique Development of 7 Luxury Homes
- Private Terrace
- Open Plan Living/ Kitchen / Dining Room
- Luxury Bathroom
- High Specification Throughout
- 802 Sq ft
- Ground Floor
- Located Opposite Fishponds Conservation Area
- Close to Local Amenities and within a short walk of Surbiton Station
- Predicted Service Charge: £1,687 per annum
- Share of Freehold with a 999 year underlying lease