



390 Allesley Old Road, Coventry - CV5 8GG

In Excess of £300,000

Williams
BIRCH

390 Allesley Old Road

Coventry, Coventry

Charming 3-bed semi-detached house in St. Christophers & Coundon area. Large drive, double garage; lounge, dining room, fitted kitchen; ground floor WC; gas central heating, double glazing. Ideal family home ready for you to move in (EPC rating to be confirmed, no chain).

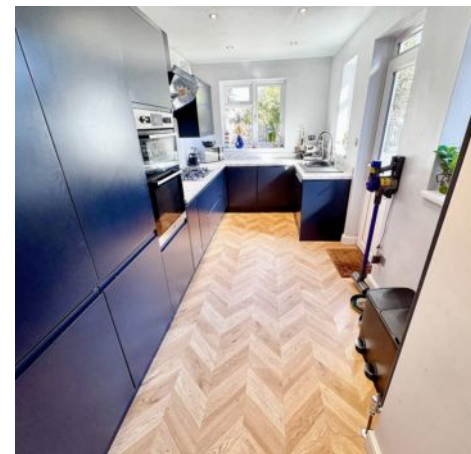
Council Tax band: C

Tenure: Freehold

EPC Energy Efficiency Rating: D

EPC Environmental Impact Rating: E

- Superb Traditional Semi Detached Double Bayed Home
- St Christophers & Coundon Catchment
- Large Drive & Double Garage
- Gorgeous Lounge
- Superb Dining Room With Door To Rear Garden
- Ground Floor WC
- Amazing Fitted Kitchen
- 3 Bedrooms
- Gas Central Heating – Double Glazing
- EPC TBC & No Chain





Ground Floor



First Floor

