



9 Springwood View Close, Sutton-In-Ashfield – NG17 2HR

Guide Price £220,000

DavidJames
the estate agent



9 Springwood View Close

Sutton-In-Ashfield, Sutton-In-Ashfield

Beautifully-presented detached home in a cul-de-sac within easy reach of local amenities and schools! Recently renovated under the current ownership with open plan living spaces, 3 beds and parking!

Council Tax band: C

Tenure: Freehold

EPC Energy Efficiency Rating: E

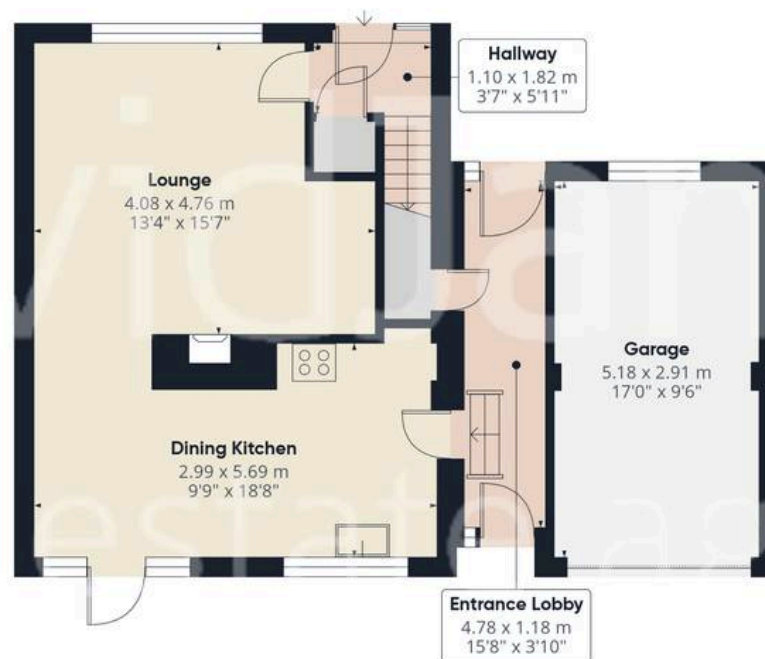
EPC Environmental Impact Rating: E

- Immaculately-presented detached family home
- Cul-de-sac location within easy reach of Sutton-in-Ashfield's nearby amenities, popular schools and transport links
- A short walk to open green spaces and the superb Brierley Forest Park
- Significantly upgraded and improved under the current ownership
- Bright and spacious lounge with a feature fireplace
- Superb recently fitted dining kitchen with a modern range of units and integrated cooking appliances
- Three well-proportioned first floor bedrooms
- Beautiful family bathroom with a three-piece white suite
- Established gardens to both elevations
- Driveway and garage provide convenient off-street parking









Floor 0

Approximate total area⁽¹⁾

99.6 m²

1073 ft²



Floor 1

(1) Excluding balconies and terraces

Calculations reference the RICS IPMS 3C standard. Measurements are approximate and not to scale. This floor plan is intended for illustration only.

GIRAFFE360



David James Estate Agents

43 Forest Street, Sutton-in-Ashfield - NG17 1DA

01623 554084 • sutton@david-james.com • www.david-james.com