



£230,000

GUIDE PRICE

CORONATION WALK
GEDLING

- NO CHAIN
- GOOD LOCATION
- THREE BEDROOMS
- DINING ROOM
- SUNROOM
- DRIVEWAY
- EPC C



Semi-Detached Property with Ample Outdoor Space

THIS THREE-BEDROOM SEMI-DETACHED HOME OFFERS SPACIOUS ACCOMMODATION AND A PRACTICAL LAYOUT, IDEAL FOR FAMILIES OR FIRST-TIME BUYERS.

SITUATED IN A POPULAR RESIDENTIAL LOCATION, THE PROPERTY BENEFITS FROM A DRIVEWAY PROVIDING OFF-STREET PARKING AND A GOOD-SIZED REAR GARDEN.

INTERNALLY, THE PROPERTY FEATURES A BRIGHT LIVING ROOM WITH PLENTY OF SPACE, COMPLEMENTED BY A SEPARATE DINING ROOM THAT LEADS DIRECTLY INTO THE KITCHEN. THE KITCHEN IS FITTED WITH A RANGE OF UNITS AND PROVIDES A FUNCTIONAL SPACE.

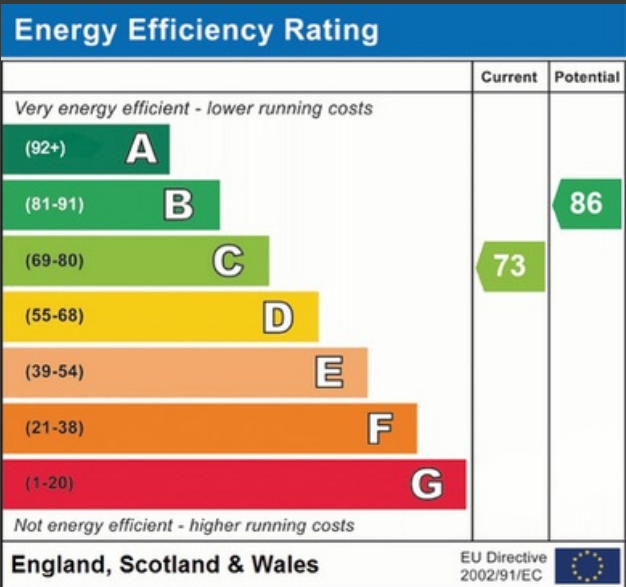
TO THE REAR, A SUNROOM OFFERS A USEFUL ADDITIONAL LIVING AREA, IDEAL AS A UTILITY SPACE, PLAYROOM, OR GARDEN ROOM.

UPSTAIRS, THERE ARE THREE WELL-PROPORTIONED BEDROOMS, INCLUDING TWO DOUBLES AND A GENEROUS SINGLE, ALL SERVED BY THE FAMILY BATHROOM.

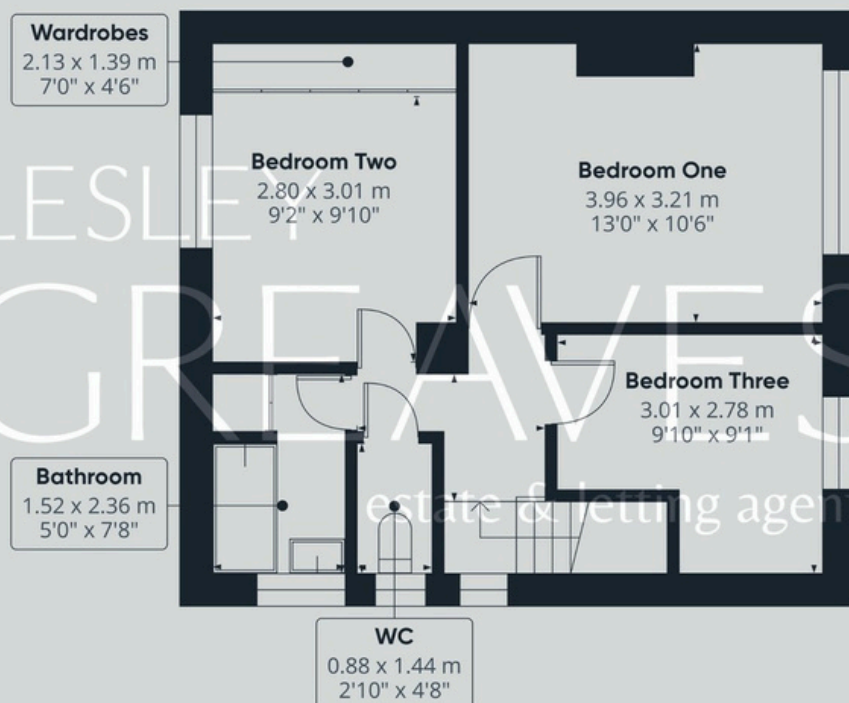
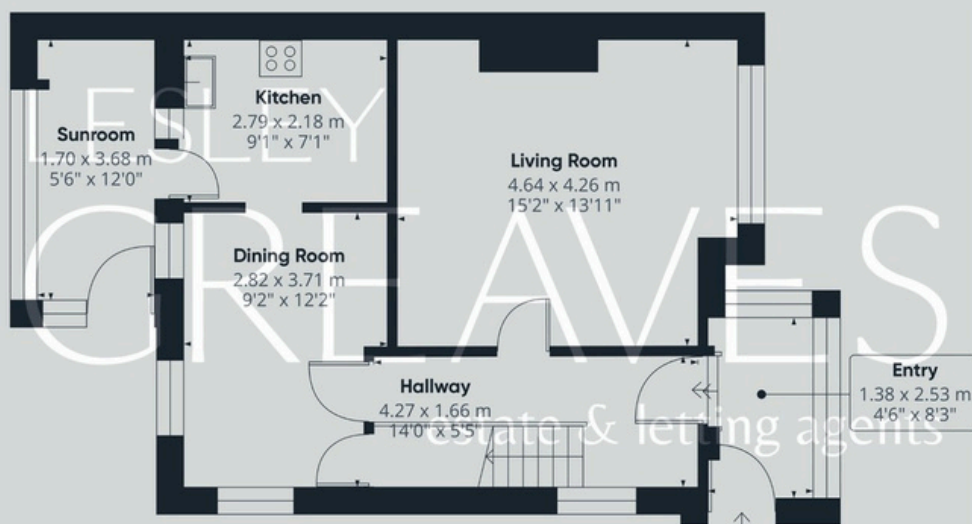
THE PROPERTY ENJOYS EXCELLENT OUTDOOR SPACE, WITH A LARGE GARDEN FEATURING A LAWN, PATIO, AND STORAGE SHED. WITH THE BENEFIT OF BOTH FRONT AND REAR OUTDOOR AREAS, THIS HOME OFFERS FLEXIBILITY AND SCOPE TO FURTHER PERSONALISE.

WELL PLACED FOR LOCAL AMENITIES, SCHOOLS, AND TRANSPORT LINKS, THIS HOME IS READY FOR ITS NEXT OWNERS TO MAKE IT THEIR OWN.

- FREEHOLD
- COUNCIL TAX; BAND B
- LOCAL AUTHORITY; GEDLING BOROUGH COUNCIL
- MEASUREMENTS; 86 SQ METERS







Agent's Note: These particulars have been prepared in good faith and are provided for guidance purposes only. While every effort has been made to ensure their accuracy, they should not be relied upon as exact. All measurements are approximate, and floor plans are for illustrative purposes only. Prospective buyers or tenants are advised to verify all details independently, conduct their own due diligence, and note that services, systems, and appliances have not been tested.

Lesley Greaves Estate & Lettings Agents

22 Main Road ,Gedling, Nottingham, NG4 3HP

0115 987 7337

sales@lesleygreaves.co.uk