



5 Wakefield Way, Aldwick

Guide Price £325,000

 Henry Adams  
estate agents



## 5 Wakefield Way

- Semi-Detached Bungalow
- Modernised Throughout
- Driveway Parking for Multiple Vehicles
- Garage
- No Onward Chain
- Westerly-Facing Garden
- Recently Refurbished Throughout

Tucked away in a peaceful cul-de-sac location in Wakefield Way, this beautifully refurbished and modernised three-bedroom semi-detached bungalow offers stylish and spacious single-storey living just moments from local amenities and transport links and the added benefit of No Onward Chain.

Step inside to discover a light and airy interior, thoughtfully updated throughout. The property features a generous lounge/diner, a sleek and contemporary kitchen, and three well-proportioned bedrooms—ideal for families, downsizers, or those seeking ample space throughout.

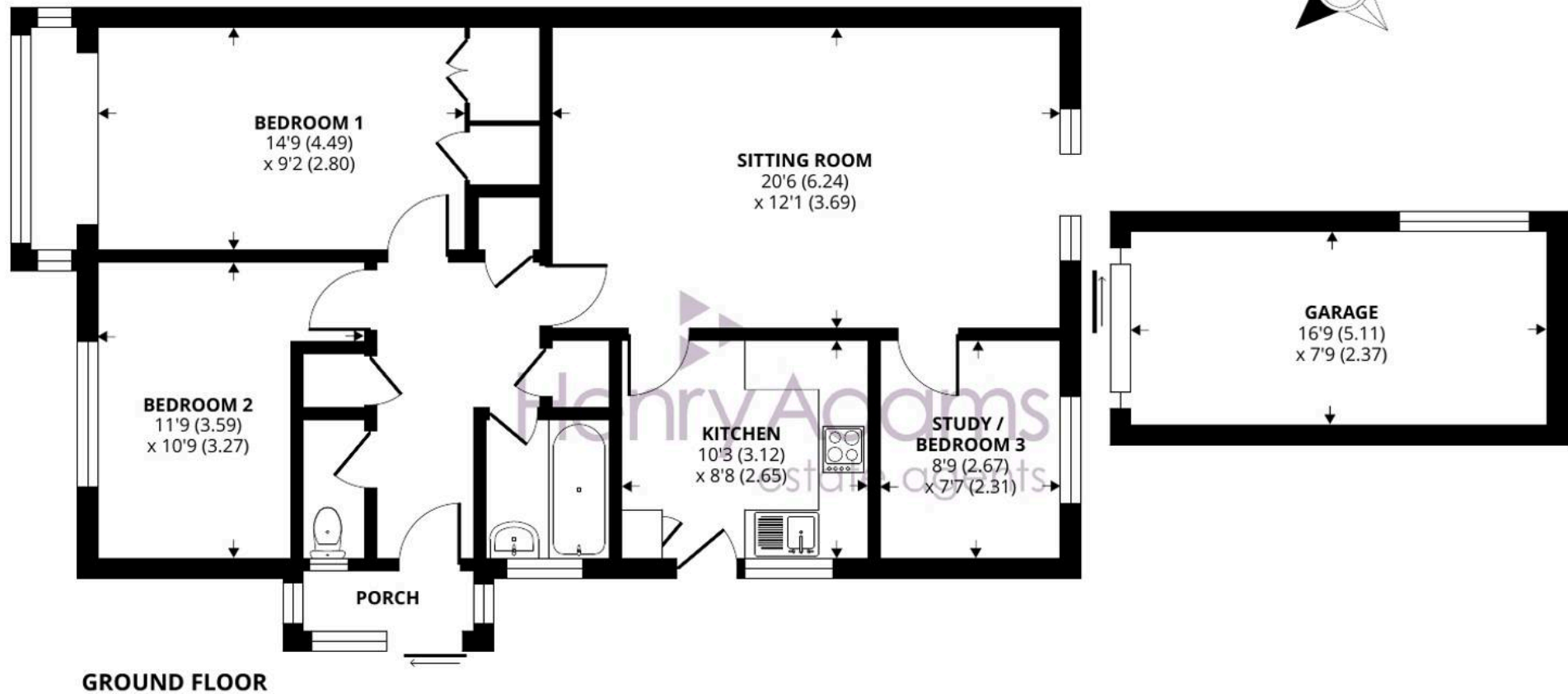
To the rear, a large, well-presented westerly-facing garden provides a fantastic space for outdoor entertaining, gardening, or simply enjoying the afternoon sun. To the front of the property, ample driveway parking for multiple vehicles and access to the garage.

Early viewing is highly recommended to appreciate the quality and space this superb bungalow has to offer.









Approximate Area = 872 sq ft / 81 sq m

Outbuilding = 130 sq ft / 12 sq m

Total = 1002 sq ft / 93 sq m

For identification only - Not to scale





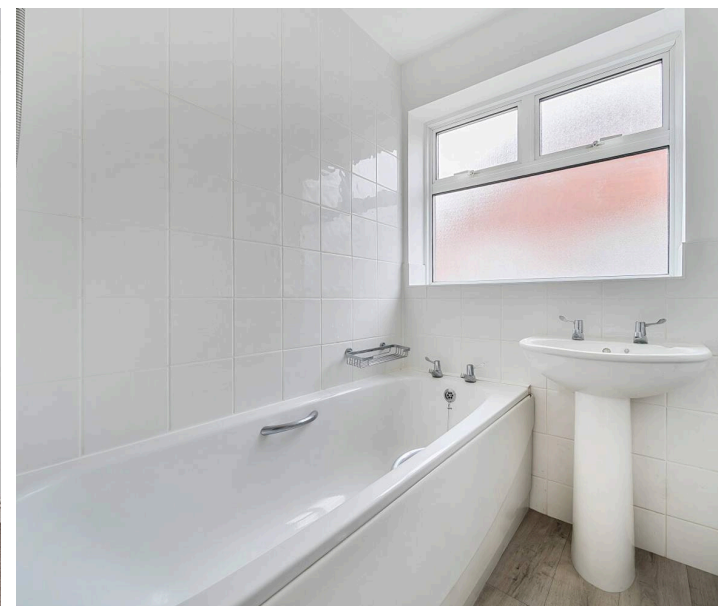
The property is situated in a cul-de-sac and conveniently located about half a mile level walk from Rose Green village shops, which include a post office, convenience store and pharmacy. A bus route passes the end of the road along Westminster Drive to Bognor Regis and the Historic Cathedral City of Chichester is about seven miles.

What3Words ///restores.ratio.caps

Council Tax Band: C

Tenure: Freehold

EPC Energy Efficiency Rating: D







## Henry Adams - Bognor and Aldwick

Henry Adams LLP, 25 High Street, Bognor Regis - PO21 1RS

01243 842123

[bognorandaldwick@henryadams.co.uk](mailto:bognorandaldwick@henryadams.co.uk)

[www.henryadams.co.uk](http://www.henryadams.co.uk)

Agents Note - Our particulars are for guidance only and are intended to give a fair overall summary of the property. They do not form part of any contract or offer, and should not be relied upon as a statement or representation of fact. Measurements, areas and distances are approximate only. Photographs may include lifestyle shots and pictures of local views. No undertaking is given as to the structural condition of the property, or any necessary consents or the operating ability or efficiency of any service, system or appliance. Please ask if you would like further information, especially before you travel to the property.