



32 Berea Road, Torquay – TQ1 1JP
£269,500





32 Berea Road

Torquay, Torquay

A deceptively spacious three bedroom semi-detached bungalow which is well presented throughout with low maintenance rear garden and front terrace, open plan living and off road parking to the rear for 1.

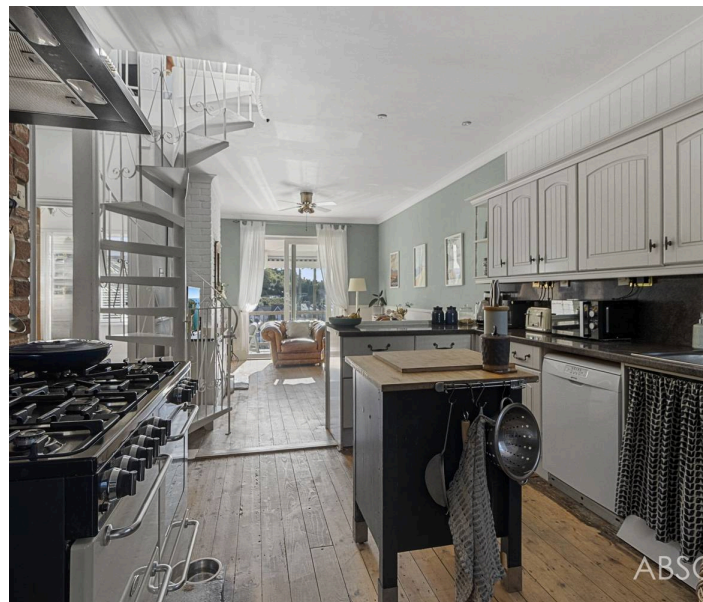
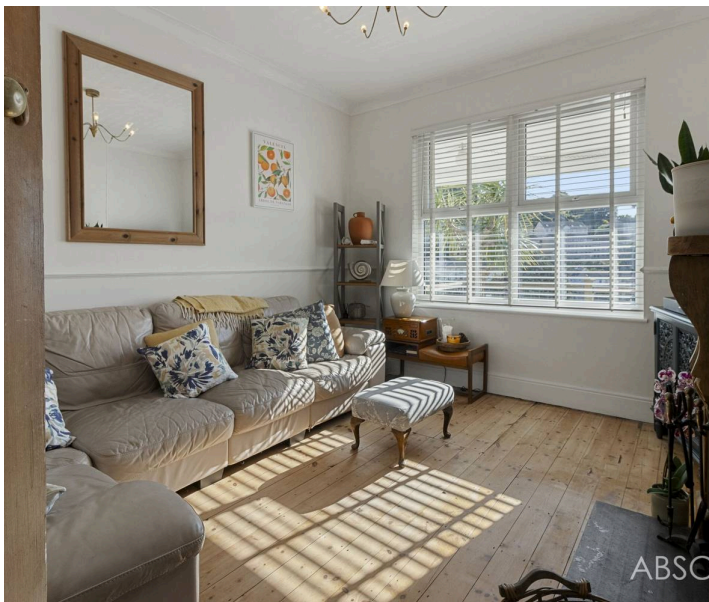
Council Tax band: C

Tenure: Freehold

EPC Energy Efficiency Rating: D

EPC Environmental Impact Rating: E

- A well presented three bed semi detached bungalow
- Open plan living area with modern fitted kitchen
- Sitting room with feature open fireplace
- Three double bedrooms (one currently arranged as second sitting room)
- Spacious four piece modern fitted bathroom/WC
- Most useful loft room/occasional bedroom four
- uPVC double glazing and gas central heating
- Superb front composite decked enclosed sun terrace enjoying open views over the surrounding area
- Within the catchment area for the highly regarded Warberry Primary School
- Off road parking for one car to the rear and on road parking with no restrictions



32 Berea Road

Torquay, Torquay

This property is in a fantastic position enjoying an open outlook over Torquay. Via the rear garden you are only a short walk from Babbacombe, St Marychurch, Wellwood village and much more. It's a great location for families and dog walkers due to its close proximity to Warberry Copse. Families are well catered for with a selection of both primary and secondary schools nearby, alongside local parks and recreational spaces. For commuters, the property offers excellent transport links, with the South Devon Highway providing quick and convenient access to Newton Abbot, Exeter, and the M5 motorway, while Torquay railway station offers connections to mainline services.

Absolute Sales & Lettings

Absolute Sales & Lettings Ltd, 13 Ilsham Road - TQ1 2JG

01803 214214

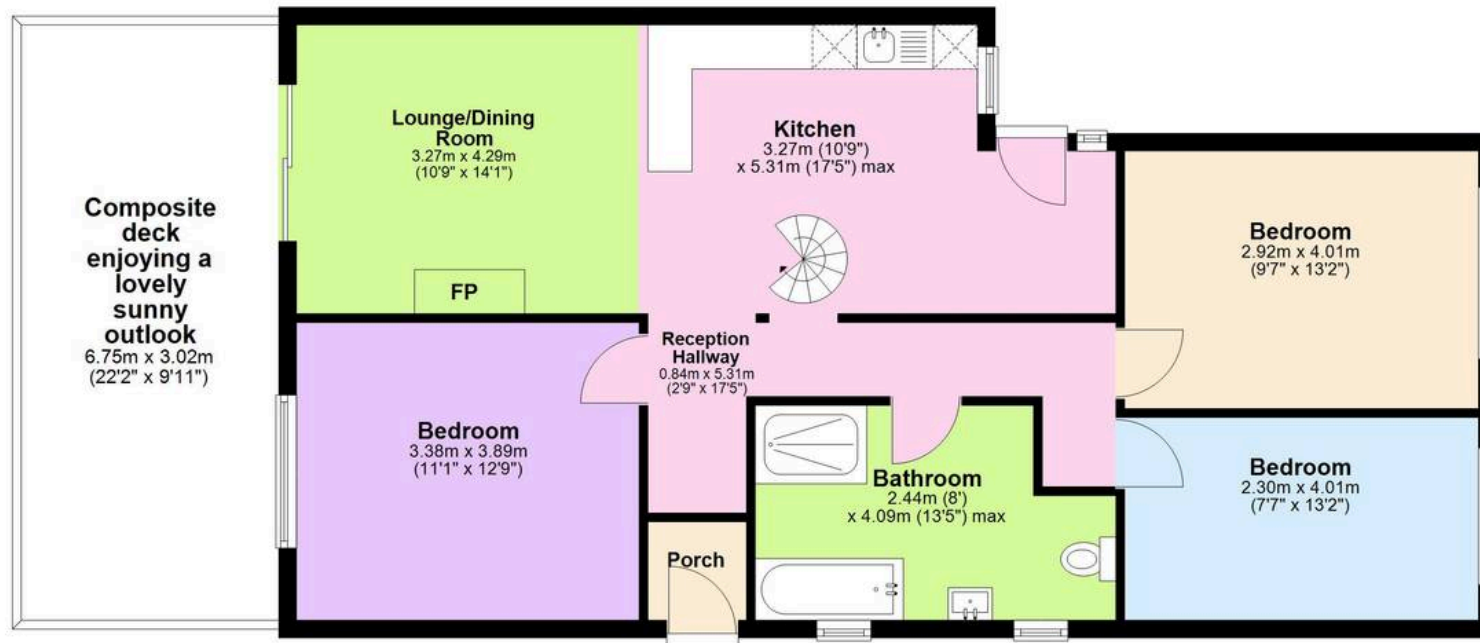
torquay@movewithabsolute.co.uk

movewithabsolute.co.uk/



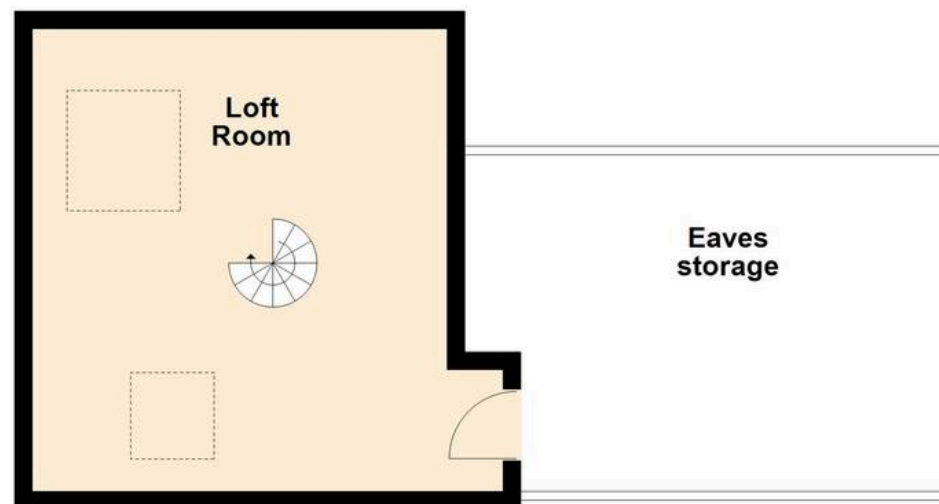
Ground Floor

Approx. 82.4 sq. metres (886.6 sq. feet)



First Floor

Approx. 25.6 sq. metres (275.1 sq. feet)



Total area: approx. 107.9 sq. metres (1161.8 sq. feet)

