



8 Aylton Estate Renforth Street, London

London

OLIVER JACQUES

Offers Over £275,000

A bright and airy living room with a blue sofa, a wooden coffee table, and a large window with red curtains. The room features striped wallpaper and a chandelier. The sofa is blue with red cushions. The coffee table is dark wood with a light top. The window has red curtains and a white frame. The floor is made of light-colored wood. The walls are covered in yellow and white striped wallpaper. A chandelier hangs from the ceiling. A small white box is mounted on the wall near the door. The door is made of wood and is slightly ajar. The room is well-lit by natural light from the window. In the bottom right corner, there is a dark grey rectangle with the word "OLIVER" in white capital letters.

A modern kitchen with white cabinetry, a stainless steel range hood, a gas cooktop, an oven, a refrigerator, and a washing machine. The countertop is dark grey, and the floor is made of light-colored wood. A window with white curtains is on the left. The text "OLIVER" is visible in the bottom right corner.

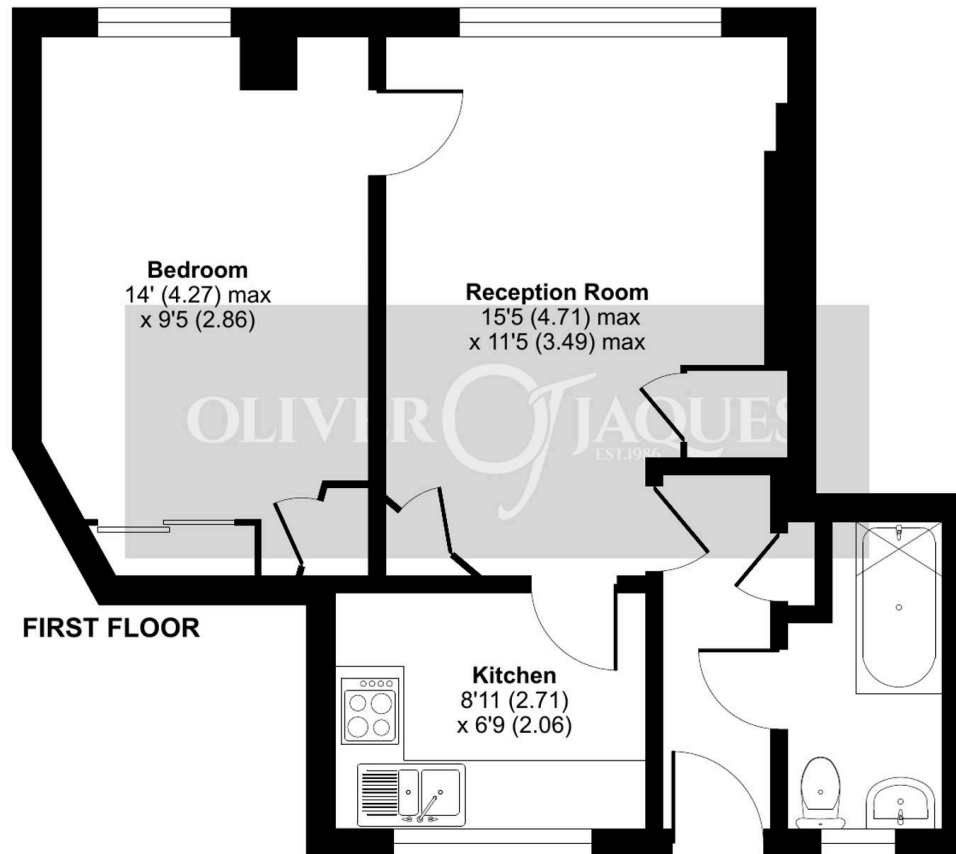
PARKING. Residents' parking available on Renforth street and in the yard right next to the property.

LOCATION. Superbly located in-between Canada Water tube (7 mins walk) and Rotherhithe overground (3 mins walk) stations. There is a pedestrian shortcut to Canada Water tube station through Pump House/Swan Road/Albatross Way. Newly rebuilt Albion Primary School 3 minutes away. Modern public library, Southwark Park, Brunel Museum,

Aylton Estate, Renforth Street, London, SE16

Approximate Area = 459 sq ft / 42.6 sq m

For identification only - Not to scale



Floor plan produced in accordance with RICS Property Measurement 2nd Edition, Incorporating International Property Measurement Standards (IPMS2 Residential). © nchecon 2025. Produced for Oliver Jaques. REF: 1358461



Oliver Jaques

Oliver Jaques, 229-231 Lower Road – SE16 2LW

02072315050 • southeast@o-j.co.uk • o-j.co.uk/

Every care has been taken with the preparation of this brochure but it is for general guidance and complete accuracy can't be guaranteed. Prospective purchasers should seek clarification from their solicitor. The mention of any appliances fixtures or fittings does not imply they are in working order.