

Welcome to your new home in Helsby



2, 3 & 4
bedroom homes



Semi detached
& detached



Freehold

Introducing...

Elysium

Set in the Cheshire Countryside, on the southern edge of Helsby, Elysium offers the perfect blend of rural-urban lifestyle. Located on the edge of Cheshire, Elysium offers sprawling countryside views to the east and Helsby high street to the north.

Every home has been thoughtfully designed by us with you in mind. From spacious open-plan living areas, modern built-in kitchens to external features such as stunning brick detailing, off-street parking, and outside space to call your own. Our development will feature a mix of exceptional 2, 3 & 4 bedroom new build homes – built to Seddon Homes' renowned high standards and come with a range of high-specification fixtures and fittings – at no extra cost!

Seddon Homes.co.uk

The Homes

2, 3 & 4 bedrooms

The
Ashton



**2 bedroom semi detached/
detached house with
parking spaces**

(side bay to some plots)

Plots 12, 13, 37, 38, 49, 50, 51, 69,
70, 71, 72, 77, 78, 79, 80, 81, 82,
83 & 84

The
Avenham



**3 bedroom semi detached/
detached house with
parking spaces**

(side bay to some plots)

Plots 2, 8, 9, 27, 43, 44, 45, 46, 94,
95, 96, 97, 98, 99, 100 & 101

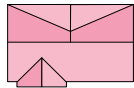
The
Clifton



**3 bedroom semi detached
house with parking spaces**

Plots 14, 15, 39, 40, 52, 53, 56, 59,
60, 61, 62, 63, 64, 65, 66, 68, 73,
74, 75, 76, 86, 87, 88, 89, 90, 105,
106, 107, 108, 109, 110, 111, 112,
114, 115, 116, 117 & 118

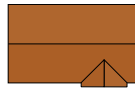
The
Hyde



**3 bedroom semi detached/
detached house with
parking spaces**

Plots 54, 55, 57, 58, 67, 85 & 113

The
Stanley



**3 bedroom semi detached/
detached house with
parking spaces**

Plots 16, 28 & 92

The
Dartmoor



**4 bedroom detached
house with detached single
garage/parking spaces**

Plots 3, 18, 19, 36, 91, 93 & 104

The
Highfield



**4 bedroom detached
house with detached single
garage/parking spaces**

Plots 1, 4, 11, 35 & 48

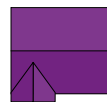
The
Osterley



**4 bedroom detached
house with detached
single garage**

Plots 5, 6, 7, 17, 20, 21, 22, 23, 26,
31, 33, 34, 42 & 47

The
Stowe



**4 bedroom detached
house with detached
single garage**

Plots 10, 24, 25, 29, 30, 32, 41,
102 & 103

Elysium,
Chester Road,
Helsby,
Cheshire,
WA6 0DL



**The Osterley
View Home**

**The Highfield View Home
& The Stowe Show Home**

Artists' impressions are drawn from an imaginary viewpoint within an open space and are intended to give an impression of the house design. Photographs are from Seddon Homes developments across the North West and are intended to show typical street scenes. Neither the artists' impressions nor the photographs are intended to give an accurate description of any specific property offered for sale, its setting or its surroundings. These do not show final details of gradients of land, boundary treatments, local authority street lighting or landscaping. We aim to build according to the layout, but occasionally we do decide to change house types, boundaries, landscaping and the positions of roads, footpaths, street lighting and other features as the development proceeds. The dimensions shown of the floor plans are approximate: each home is built individually and so the precise measurements may vary from that shown although every endeavour is made to make the dimensions as accurate as possible. We give maximum dimensions that include fitted wardrobes, sloping ceilings, bay windows and any other features.

The Ashton

2 bedroom semi detached/detached house with parking spaces *(side bay to some plots)*



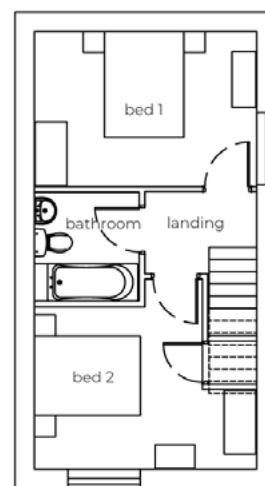
Seddon Homes.co.uk

Ground floor



Lounge/Dining Area	13'11" x 12'6"
Kitchen	10'11" x 10'3"
WC	5'9" x 3'11"

First floor



Master Bedroom	13'11" x 9'8"
Bedroom 2	13'11" x 10'2"
Bathroom	6'8" x 6'10"

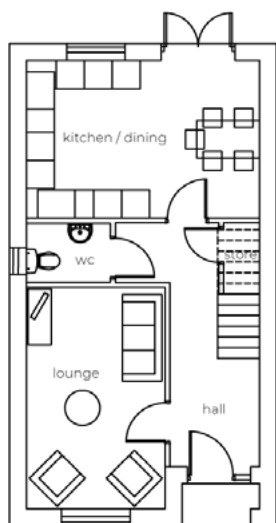
The Avenham

3 bedroom semi detached/detached house with parking spaces *(side bay to some plots)*



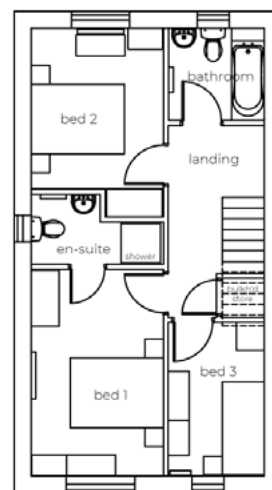
Seddon Homes.co.uk

Ground floor



Lounge	9'10" x 15'7"
Kitchen/Dining Area	16'8" x 11'3"
WC	6'0" x 4'3"

First floor



Master Bedroom	9'6" x 14'8"
En Suite	9'6" x 5'1"
Bedroom 2	9'6" x 11'5"
Bedroom 3	6'10" x 11'0"
Bathroom	6'10" x 6'8"

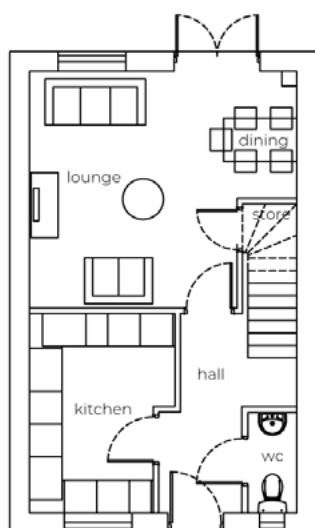
The Clifton

3 bedroom semi detached house with parking spaces



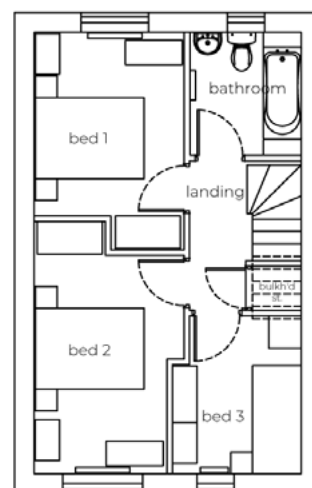
Seddon Homes.co.uk

Ground floor



Lounge/Dining Area	16'3" x 14'4"
Kitchen	8'11" x 12'3"
WC	3'1" x 6'2"

First floor



Master Bedroom	9'2" x 11'2"
Bedroom 2	8'2" x 15'5"
Bedroom 3	7'11" x 9'9"
Bathroom	6'10" x 7'6"

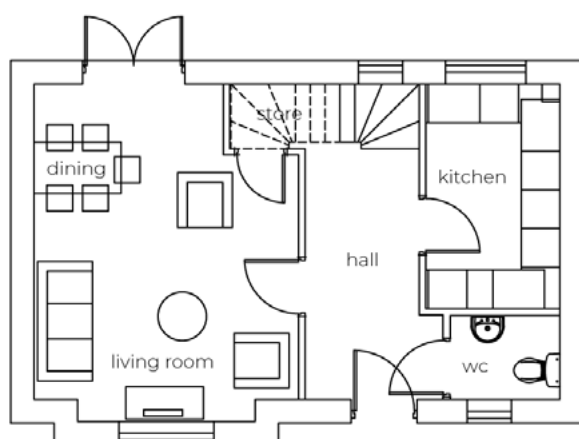
The Hyde

3 bedroom semi detached/detached house with parking spaces



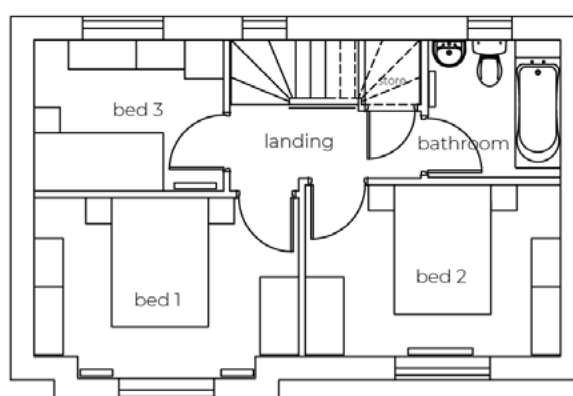
Seddon Homes.co.uk

Ground floor



Lounge/Dining Area	13'7" x 16'3"
Kitchen	6'11" x 11'6"
WC	5'9" x 4'5"

First floor



Master Bedroom	13'6" x 8'2"
Bedroom 2	13'1" x 8'10"
Bedroom 3	9'9" x 7'10"
Bathroom	6'11" x 7'1"

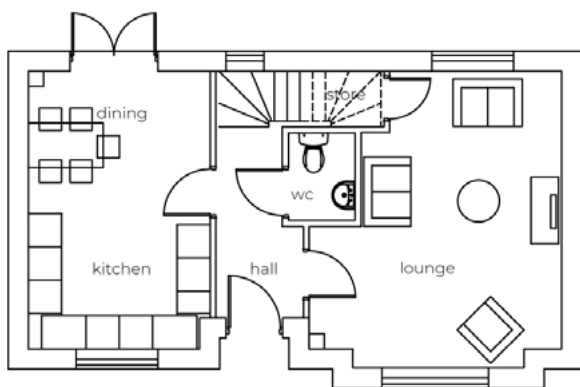
The Stanley

3 bedroom semi detached/detached house with parking spaces



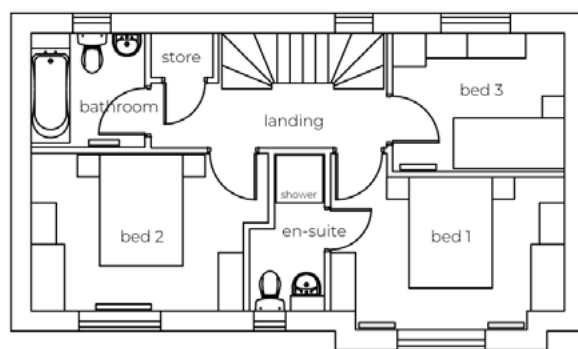
Seddon Homes.co.uk

Ground floor



Lounge	15'1" x 16'6"
Kitchen/Dining Area	10'11" x 16'6"
WC	4'5" x 5'3"

First floor



Master Bedroom	13'11" x 7'11"
En Suite	4'7" x 9'5"
Bedroom 2	12'8" x 9'5"
Bedroom 3	10'2" x 8'3"
Bathroom	6'10" x 6'10"

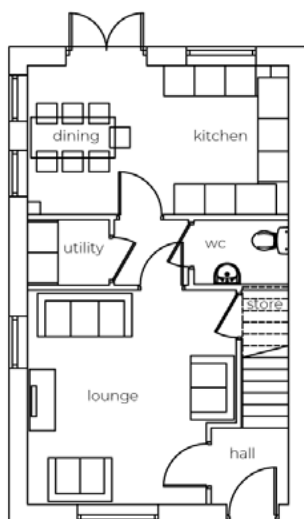
The Dartmoor

4 bedroom detached house with detached single garage/parking spaces



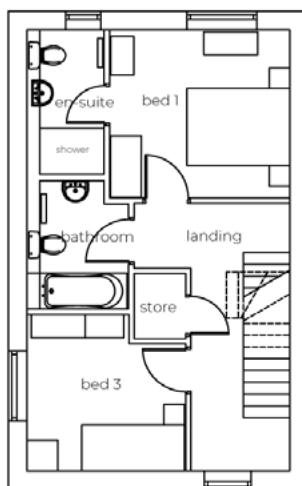
Seddon Homes.co.uk

Ground floor



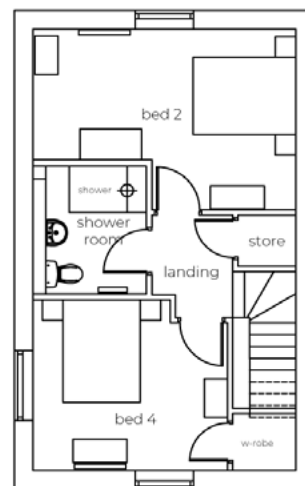
Lounge	13'7" x 13'10"
Kitchen/Dining Area	16'11" x 9'9"
Utility	5'4" x 4'3"
WC	6'2" x 4'3"

First floor



Master Bedroom	11'7" x 10'11"
En Suite	5'1" x 9'8"
Bedroom 3	10'3" x 10'1"
Bathroom	5'8" x 8'0"

Second floor



Bedroom 2	16'11" x 11'8"
Bedroom 4	12'6" x 11'0"
Shower Room	5'0" x 8'4"

The Highfield

4 bedroom detached house with detached single garage/parking spaces



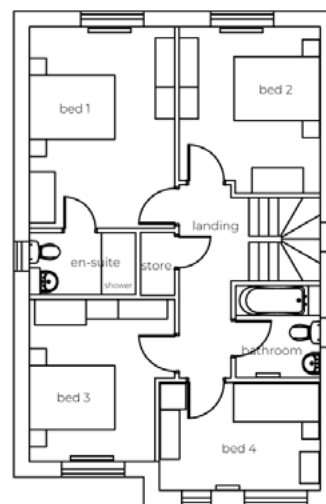
Seddon Homes.co.uk

Ground floor



Lounge/Dining Area	22'5" x 12'11"
Kitchen	9'8" x 13'6"
Study	6'9" x 15'9"
Utility	6'3" x 6'6"
WC	3'1" x 6'5"

First floor



Master Bedroom	11'7" x 15'7"
En Suite	8'1" x 4'9"
Bedroom 2	10'7" x 13'0"
Bedroom 3	11'7" x 12'7"
Bedroom 4	12'5" x 8'4"
Bathroom	6'8" x 7'0"

All layouts are for illustrative purposes only and may differ by plot. Please speak to your Sales Advisor for more information.

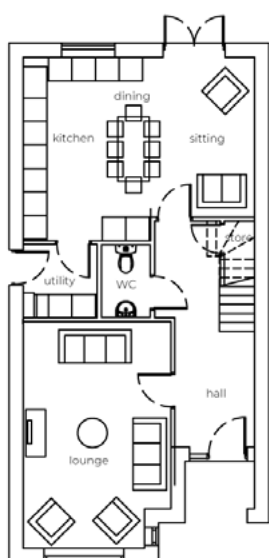
The Osterley

4 bedroom detached house with detached single garage



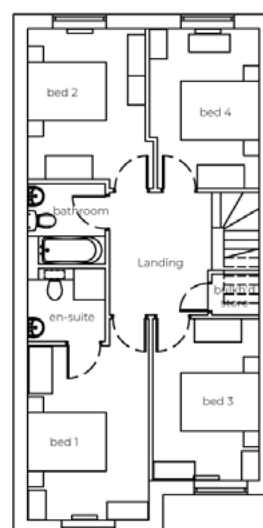
Seddon Homes.co.uk

Ground floor



Lounge	12'5" x 19'1"
Kitchen/Dining/Family Area	19'6" x 15'6"
Utility	6'3" x 6'2"
WC	4'2" x 6'2"

First floor



Master Bedroom	10'3" x 14'8"
En Suite	6'8" x 6'3"
Bedroom 2	10'7" x 12'8"
Bedroom 3	9'0" x 13'8"
Bedroom 4	9'3" x 13'5"
Bathroom	6'8" x 6'10"

All layouts are for illustrative purposes only and may differ by plot. Please speak to your Sales Advisor for more information.

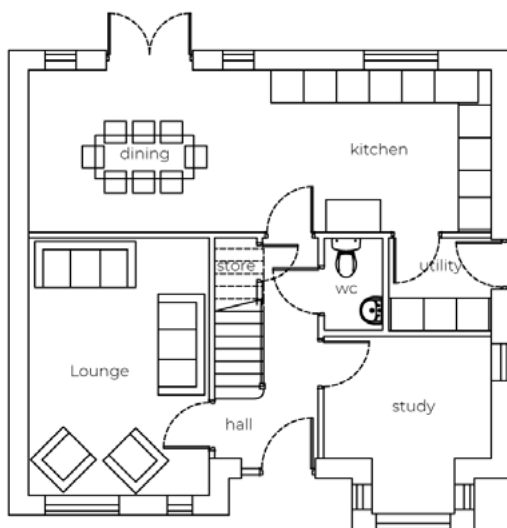
The Stowe

4 bedroom detached house with detached single garage



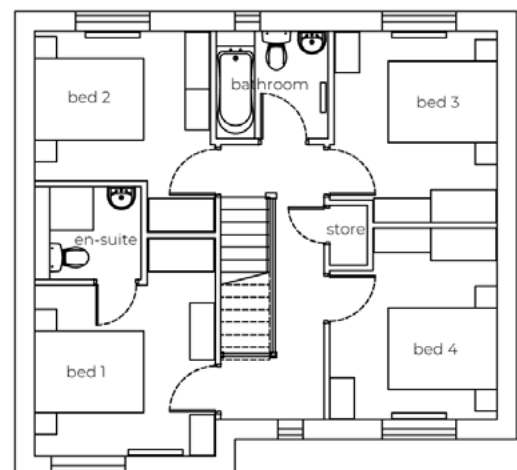
Seddon Homes.co.uk

Ground floor



Lounge	11'0" x 15'6"
Kitchen/Dining Area	28'0" x 9'11"
Study	9'11" x 7'6"
Utility	5'10" x 5'6"
WC	3'10" x 5'6"

First floor



Master Bedroom	11'0" x 13'3"
En Suite	6'6" x 5'8"
Bedroom 2	10'8" x 9'2"
Bedroom 3	9'11" x 11'8"
Bedroom 4	10'2" x 11'7"
Bathroom	6'10" x 6'8"

All layouts are for illustrative purposes only and may differ by plot. Please speak to your Sales Advisor for more information.

Finishing Touches

All house types will enjoy the following as standard:-

CONSTRUCTION All the homes will be traditionally built using Brick and Block with a concrete tile roof. Render to some plots. Foundations are to be piled, vibro piled or trench. First floors will receive moisture resistant boarding. Black SVP and rainwater pipes. White PVC fascias & soffits where applicable. White external meter boxes.

COMFORT AND SECURITY Gas fired, thermostatically dual controlled central heating with energy efficient combi boilers. Glass fibre roof insulation. Highly insulated walls. Mainly top hung locking uPVC windows with energy saving glazing. Multi point lock to front and rear doors.

FINISHING TOUCHES Contemporary skirting board and architrave. Flush panel white ladder style internal doors with chrome lever furniture. Builders robe to master bedroom on 4 bedroom homes only. Chrome sockets and switch plates to kitchen, bathroom and en suite/s. White staircase & spindles.

PAINTWORK Front, rear, personnel and garage doors where applicable finished in accordance with architect's specification. White satin to all internal timbers. Plastered walls and ceilings will receive white matt emulsion.

BATHROOMS, EN SUITES AND CLOAKROOMS Stylish white sanitaryware from Ideal Standard mostly incorporated within a tiled boxed unit with laminate over shelf to selected rooms (please speak to Sales Advisor for confirmation as some rooms may not have this feature). Glazed shower cubicles with thermostatic mains showers with rainfall shower head where applicable (except second en suite which will be electric). Mixers to all baths. Chromium plated ceramic disk taps. Half height European wall tiling around bath and full height to shower cubicles with splash back elsewhere to tiler's discretion. Chrome LED downlights and heated towel rail to all en suites & bathrooms (excluding WC/Cloakrooms).

ELECTRICAL TV points to lounge and master bedroom. BT socket outlets to lounge, master bedroom and study (where applicable). USB charging socket to kitchen & master bedroom. Loft light point switched to landing. All internal light points low energy. LED dual porch light. Shaver socket to bathroom & en suite where applicable. Chrome effect door bell and chimes. Light to storage cupboard where applicable.

EXTERNAL Front doors to be black solid Verona style (not as per CGI images) any relevant glazed side panels as per drawings – please speak to your Sales Advisor for confirmation. Ventilated soffit and rainwater goods. Turfed front and rear gardens. Where there is an existing tree within the plot boundary we would typically not turf under the circumference of the canopy. Tarmac driveway. Timber close boarded fencing & gate. Light and power point to garage. Relevant garages to receive black ladder style door. Garden tap. Estate landscaping in accordance with architect's approved layout.

WARRANTY All homes carry a 10-year warranty (from date of CML sign off).

TENURE Freehold. Maintenance fee is estimated £210 per annum.

GENERAL Seddon Homes operates under the Consumer Code for Home Builders guidance. A copy of the Code is available from any member of our team and will be given to all buyers at point of reservation or can be downloaded from our website www.seddonhomes.co.uk/consumercode.

Why buy your forever home in Helsby

For commuters, Elysium is well connected to all major routes. Located just off Chester Road, the M56 is a few minutes' drive away, providing access to Chester, Liverpool, Manchester, Wales and the wider motorway network.

By car it's around 25 minutes to Chester, half an hour to Warrington and Liverpool John Lennon Airport and an hour to Manchester City Centre.

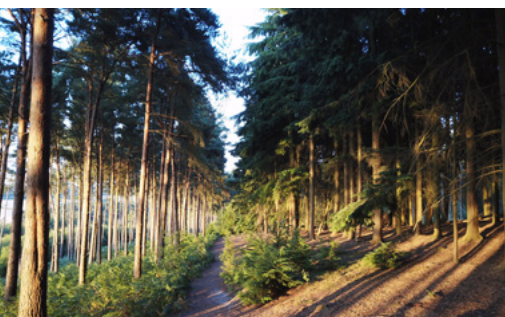
Helsby village provides a range of independent shops and convenience stores, including a post office, hairdressers and pooch parlour. For your weekly shop, there's a Tesco Superstore located within walking distance.

Elysium is also within walking distance of several good and outstanding schools, including Helsby Hillside, Horn's Mill Primary School and Helsby High School. And when the time comes, there's a range of universities in the vicinity to choose from. All are easily accessible by car or public transport links.

Marketing Suite open
Thursday-Monday,
10am-5pm

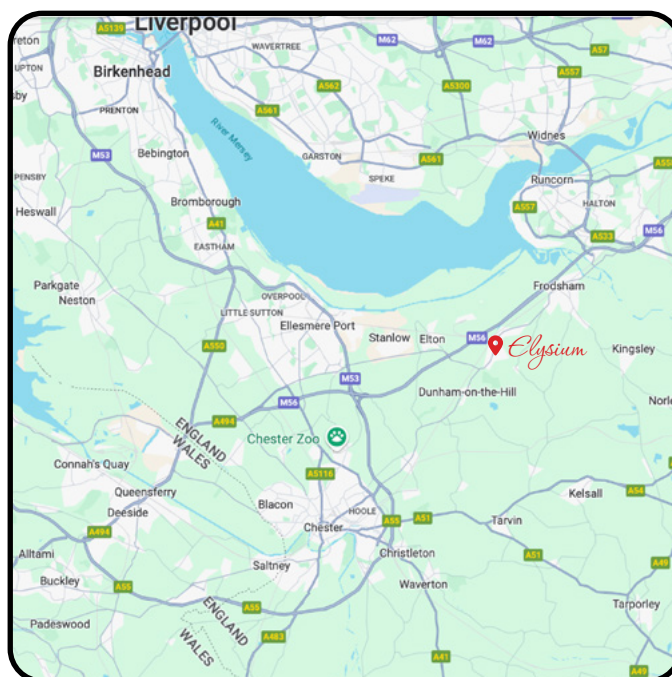
01928 650042

elysium@seddonhomes.co.uk



Find us

Elysium
Chester Road
Helsby
Cheshire
WA6 0DL



**CONSUMER
CODE FOR
HOME BUILDERS**

www.consumercode.co.uk

Seddon Homes Limited
Birchwood One Business Park,
Dewhurst Road, Birchwood
Warrington, WA3 7GB



Seddon Homes.co.uk