

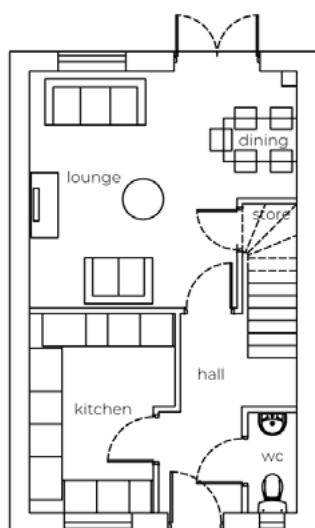
The Clifton

3 bedroom semi detached house with parking spaces



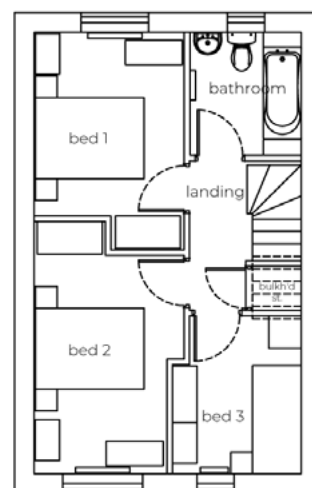
Seddon Homes.co.uk

Ground floor



Lounge/Dining Area	16'3" x 14'4"
Kitchen	8'11" x 12'3"
WC	3'1" x 6'2"

First floor



Master Bedroom	9'2" x 11'2"
Bedroom 2	8'2" x 15'5"
Bedroom 3	7'11" x 9'9"
Bathroom	6'10" x 7'6"