



29 Highland Drive, Sutton-In-Ashfield – NG17 1LX

Guide Price **£175,000**

DavidJames
the estate agent



29 Highland Drive

Sutton-In-Ashfield, Sutton-In-Ashfield

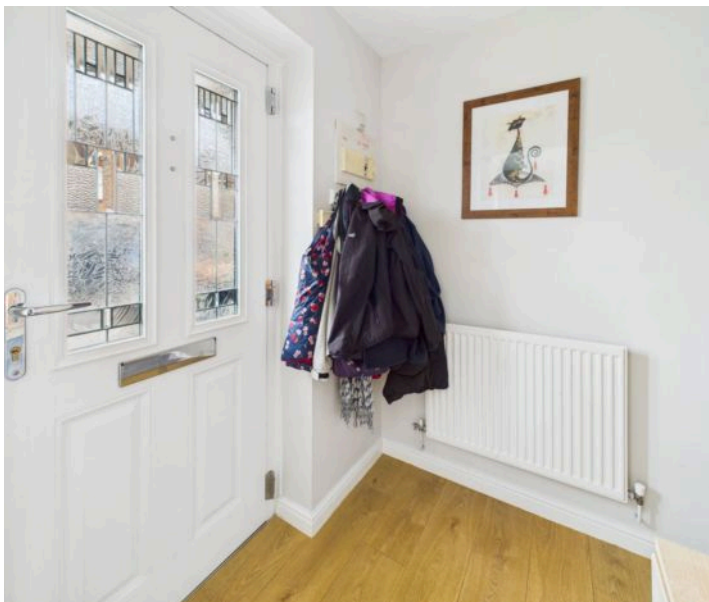
Well-presented, modern townhouse with 2 double bedrooms (1 with fitted wardrobes), lounge with fireplace, dining kitchen, UPVC conservatory, first-floor bathroom, gas central heating, UPVC double glazing, alarm system, enclosed garden with patio, 2 parking spaces. Council Tax band: A

Tenure: Freehold

EPC Energy Efficiency Rating: C

EPC Environmental Impact Rating:

- Well presented and well proportioned modern end townhouse
- Two double bedrooms, bedroom one with fitted wardrobes
- Entrance hall with laminate flooring
- Lounge with fireplace having an electric fire
- Dining kitchen with a range of cream gloss units and timber effect work surfaces as well as an integrated oven and hob
- UPVC double glazed conservatory with radiator and French doors to the rear garden
- First floor bathroom/Wc with white suite and electric shower
- Gas central heating, UPVC double glazing, alarm system
- Attractive enclosed lawned garden with patio
- Two parking spaces within an allocated parking area to the front of the property









Floor 0



Floor 1

Approximate total area⁽¹⁾

67.4 m²

725 ft²

(1) Excluding balconies and terraces

Calculations reference the RICS IPMS 3C standard. Measurements are approximate and not to scale. This floor plan is intended for illustration only.

GIRAFFE360



David James Estate Agents

43 Forest Street, Sutton-in-Ashfield - NG17 1DA

01623 554084 • sutton@david-james.com • www.david-james.com