



Curacao Ray Park Road, Maidenhead
£1,295,000



Curacao Ray Park Road

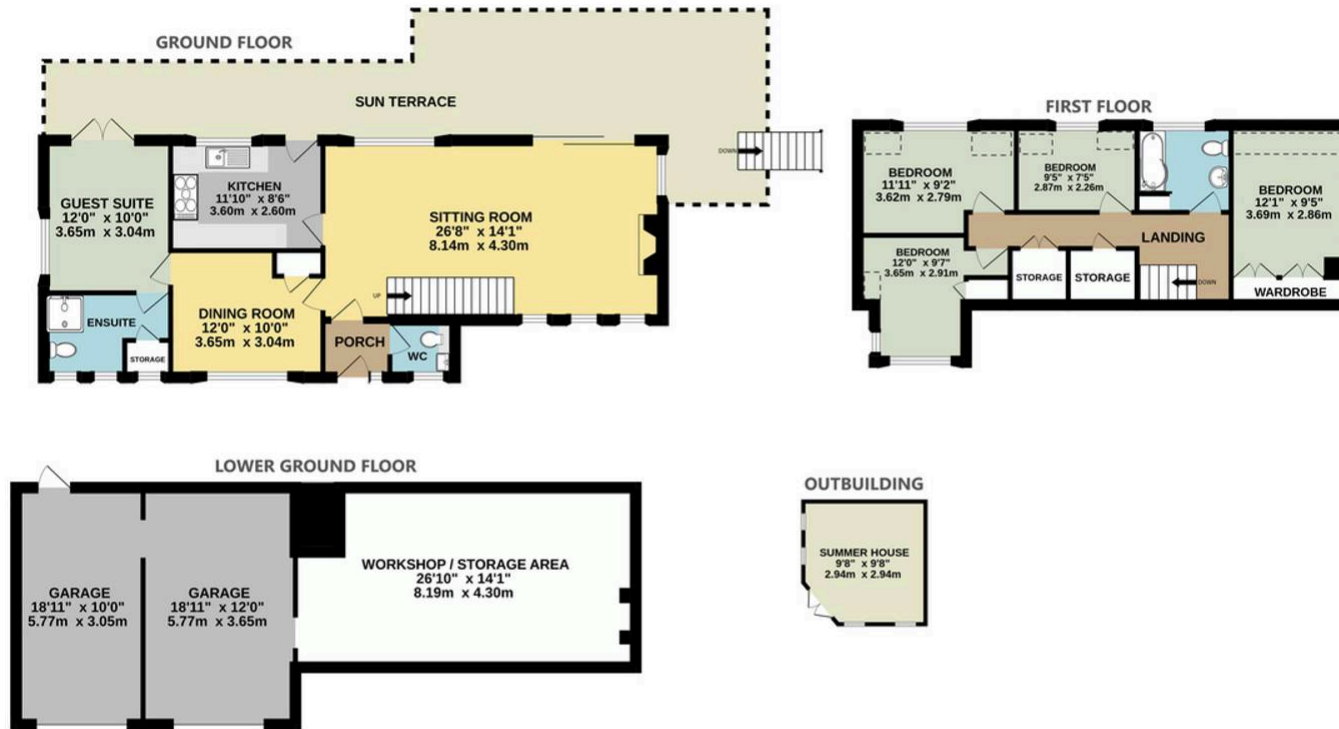
Maidenhead

Enviably located in a leafy riverside street, yet highly convenient for Maidenhead town centre, this delightful detached home is spacious, bright and attractive. The River Thames is a mere 80 yards from the entrance. Inside, the ground floor layout is versatile with easy options to reconfigure to suit ones needs. The sumptuous living and dining room boasts gorgeous parquet flooring and a feature fireplace, with patio doors opening onto a beautiful raised deck which wraps around the rear of the house. There is a stylish modern kitchen with an adjacent study/dining room that could lend it self to being open-plan if desired. The guest bedroom with large ensuite shower room is at the far end. Upstairs there are four nicely proportioned bedrooms; a master with range of fitted storage, two more doubles and a single bedroom/nursery. and a lovely family bathroom. Outside is the real star of the show, a truly magical garden with lots of areas to explore. There are two integral garages beneath the house, with a huge basement storage area and even a gardener's w.c.



- Fabulous location in Maidenhead river area
- Double garage plus further basement store
- Four/five bedrooms, two bathrooms
- 80 yards to the River Thames
- Landscaped garden
- Superbly presented
- Easy level walk to Waitrose and train station





TOTAL INTERNAL FLOOR AREA EXCLUDING OUTBUILDING AND LOWER FLOOR 1402.ft. (131.sqm) approx

TOTAL FLOOR AREA : 2258 sq.ft. (209.8 sq.m.) approx.

Whilst every attempt has been made to ensure the accuracy of the floorplan contained here, measurements of doors, windows, rooms and any other items are approximate and no responsibility is taken for any error, omission or mis-statement. This plan is for illustrative purposes only and should be used as such by any prospective purchaser. The services, systems and appliances shown have not been tested and no guarantee as to their operability or efficiency can be given.

Made with Metropix ©2025

B



Barker Stone

Barker Stone, 31 High Street, Cookham – SL6 9SJ

01628 947 888 • enquiries@barkerstone.co.uk • barkerstone.co.uk



Note for prospective buyers and tenants: Whilst every attempt has been made to ensure accuracy, these particulars are for general guidance only. All measurements are approximate and they must not be relied upon. All photographs are for general information and it is not inferred that any item shown is included with the property.