



2 St. Bartholomews Close, Chichester, PO19 3EP

Guide Price £795,000

 **Henry Adams**
estate agents

2 St. Bartholomews Close, Chichester

A spacious three storey town house nestled in the heart of the city.

- Imposing Neo-Georgian town house in exclusive mews courtyard
- Prime city centre location
- Stylish shaker-style kitchen
- Dual-aspect sitting/dining room
- Principal bedroom suite with en-suite bathroom
- Two further first-floor bedrooms with shower room
- Allocated parking bay plus visitor parking

An imposing four bedroom Neo-Georgian town house, beautifully positioned within an exclusive mews courtyard development in the heart of Chichester city centre. Just a short, level stroll of less than half a mile brings you to the pedestrianised shopping precinct, with its charming boutiques, cafés and restaurants, offering the perfect blend of city convenience and tranquil, private living.

Arranged over three storeys, the ground floor is designed for both style and practicality. A welcoming entrance hall with cloakroom sets the tone for the home, while the shaker-style kitchen combines timeless elegance with modern convenience, featuring an integrated double oven, hob, dishwasher and fridge/freezer. Through an archway, a utility area provides plumbing for a washing machine, keeping everyday chores discreetly tucked away.





The dual aspect sitting and dining room is generously proportioned and cleverly arranged into two zones, with the sitting area conveniently located next to the kitchen. French doors open onto a secluded walled courtyard garden, complete with split-level patio and a pedestrian pathway connecting to the central courtyard, creating an inviting space for outdoor entertaining or relaxing in the sunshine.

The first floor is devoted to restful living, with a principal bedroom suite boasting a bright dual-aspect bedroom and en-suite bathroom. Two additional bedrooms, currently arranged as a study and a cosy sitting room, offer versatility for a growing family, home office or quiet retreat, served by a shower room.

On the second floor, a guest suite provides a private haven with a spacious double bedroom and en-suite bathroom, ideal for visitors or older children seeking independence.

Externally, the property benefits from an allocated parking bay and additional visitor parking within the courtyard.

Every detail of this elegant home has been designed with both style and functionality in mind, from its classic portico entrance to the well-proportioned living spaces and the charming outdoor areas.

This town house perfectly combines city-centre convenience with a sense of privacy and refinement, offering a truly desirable home for modern family living or entertaining in style.

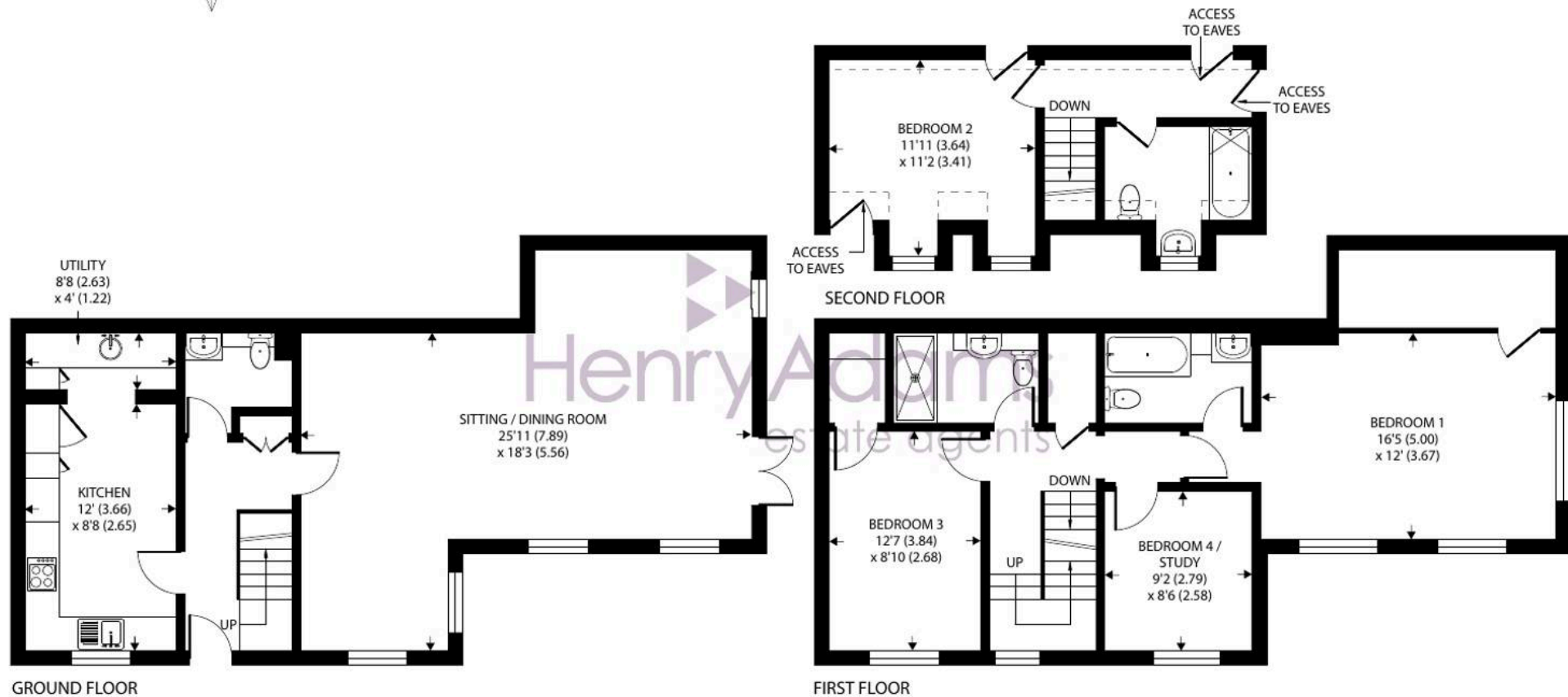








Denotes restricted
head height



2 St. Bartholomews Close, Chichester

Approximate Area = 1624 sq ft / 150.8 sq m

Limited Use Area(s) = 35 sq ft / 3.2 sq m

Total = 1659 sq ft / 154 sq m

For identification only - Not to scale



Floor plan produced in accordance with RICS Property Measurement 2nd Edition,
Incorporating International Property Measurement Standards (IPMS2 Residential). © nichecom 2025.
Produced for Henry Adams. REF: 1361993

Location - A beautiful cathedral city with a great heritage, Chichester offers a wealth of historical landmarks, buildings and places of interest. Set within its impressive Roman Wall the city's four main streets intersect at the Tudor Market Cross which is truly the heart of the city and where one can meet and enjoy wonderful examples of Georgian architecture. Well known as a cultural hub, Chichester has a 100 seater art-house cinema, the award-winning Chichester Festival Theatre, Pallant House Gallery and a wide selection of popular restaurants. The nearby Goodwood Estate hosts an exciting flat racing calendar including the prestigious 'Qatar Goodwood Festival', as well as International motor racing events such as the 'Festival of Speed' and 'Goodwood Revival'. The Chichester Harbour is on the doorstep and is a popular hub for sailing and other water sports with its direct access to the Solent and events such as the world famous Cowes Week sailing Regatta on the Isle of Wight. The South Downs National Park and the Weald and Downland Living Museum lie close at hand to the north of the city.

Directions - From the end of West Street proceed straight over the roundabout into Westgate, take the second turning on the left into St Batholomews Close. Proceed into the cul-de-sac and number 2 is in the left hand corner. What3words - [swift.humid.soccer](#)

Chichester District Council - 25/26 Tax Band G £3,895.10

EPC-TBC





Henry Adams - Chichester

Henry Adams LLP, Rowan House Baffins Lane - PO19 1UA

01243 533377

chichester@henryadams.co.uk

www.henryadams.co.uk

Agents Note - Our particulars are for guidance only and are intended to give a fair overall summary of the property. They do not form part of any contract or offer, and should not be relied upon as a statement or representation of fact. Measurements, areas and distances are approximate only. Photographs may include lifestyle shots and pictures of local views. No undertaking is given as to the structural condition of the property, or any necessary consents or the operating ability or efficiency of any service, system or appliance. Please ask if you would like further information, especially before you travel to the property.