



MOVE MAKER

Sales • Lettings • Property Management



4 Elmsdale Close

South Elmsall, Pontefract, , WF9 2JS

Offers In Region Of £165,000

Property Features

- Extended mid terrace house
- Entrance
- Kitchen/Diner
- Rear extension
- Lounge
- Three Bedrooms
- Bathroom
- Off road parking
- Rear garden
- Solar panels owned outright

Full Description

FRONT

Open driveway providing off road parking. Pathway up to the front door.

ENTRANCE

3' 5" x 3' 5" (1.04m x 1.04m)

White glazed and panelled Upvc entrance door. Radiator with thermostatic valve.



LOUNGE

14' 9" x 14' 9" (4.5m x 4.5m)

Decorated in contrasting styles with feature chimney breast wall and coving to the ceiling. Timber fire surround with granite hearth and back and a pebbled electric fire. Open staircase to the first floor. Low level bay window overlooking the front. Radiator with thermostatic valve.



KITCHEN/DINER

14' 9" x 11' 5" (4.5m x 3.48m)

Having a good range of base and wall units in burgundy and cream with contrasting tiles to the splash backs and lights to the kickboards. Built in dishwasher, electric oven and 4 ring gas hob. New granite effect white work surfaces with a black composite sink and drainer and mixer tap. Glass block windows to the extension. Cream laminate flooring. Tall black feature radiator. Glazed double doors lead into the rear extension.



REAR EXTENSION

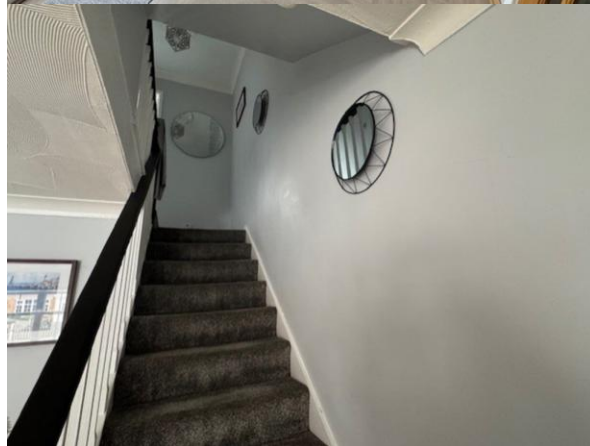
14' 9" x 7' 3" (4.5m x 2.21m)

A great space which could have a variety of uses ie, utility, play room, snug etc. Cream laminate flooring and vertical blinds to the window. Worcester combi boiler and radiator with thermostatic valve. Upvc French doors with vertical blinds leads out to the rear garden.



STAIRS

Leading from the lounge to the first floor.



LANDING

10' 7" x 5' 8" (3.23m x 1.73m)

Black and white balustrade. Above stairs storage. Loft hatch with pull down ladder.



BEDROOM ONE

12' 10" x 8' 9" (3.91m x 2.67m)

A front facing room with feature papered wall. Built in beech wardrobes and over bed storage. Cream roller blind to the window. Radiator with thermostatic valve.



BEDROOM TWO

12' 10" x 8' 8" (3.91m x 2.64m)

Window with roman blind over looking the rear garden. Feature wall and neutral shades. Radiator with thermostatic valve.



BEDROOM THREE

9' 7" x 5' 8" (2.92m x 1.73m)

A front facing single room. Radiator with thermostatic valve.



BATHROOM

5' 7" x 5' 4" (1.7m x 1.63m)

Being fully tiled to the walls and floor. White three piece suite comprising low flush wc, pedestal wash basin with mixer tap and a jacuzzi bath with shower mixer tap. Electric shower. Roman blind to the window.



REAR

Fully enclosed by timber boundary fencing with access gate to the rear.
Timber decked seating area and step up onto artificial lawn with borders along the sides. Brick outbuilding.



GARDEN



%epcGraph_c_1_339%

33 Barnsley Road
South Elmsall
Pontefract
West Yorkshire
WF9 2RN

www.zoopla.co.uk
info@movemaker.co.uk
01977 608484



Agents Note: Whilst every care has been taken to prepare these sales particulars, they are for guidance purposes only. All measurements are approximate and are for general guidance purposes only and whilst every care has been taken to ensure their accuracy, they should not be relied upon and potential buyers are advised to recheck the measurements