



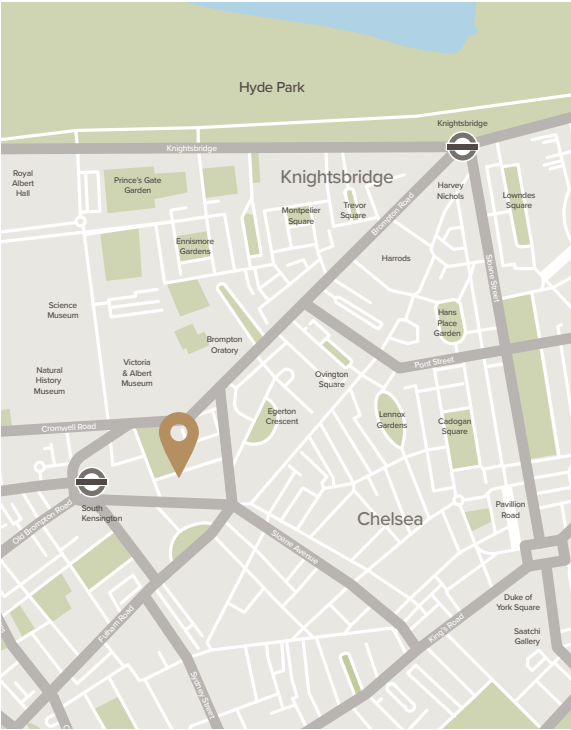
Thurloe Square

South Kensington SW7



A superb family house located on the south side of the Square with access to the communal gardens. Set over five floors, the house has wonderful entertaining spaces as well as six bedrooms. Located in South Kensington with its excellent transport links, the area is full of renowned restaurants, shops, and amenities.





Accommodation

- Entrance hall
- Kitchen
- Dining room
- Drawing room
- Reception room with balcony
- Study
- Family room
- Principal bedroom suite
- Two en suite bedrooms
- Three further bedrooms
- Family bathroom
- Utility room
- Terrace
- Garden

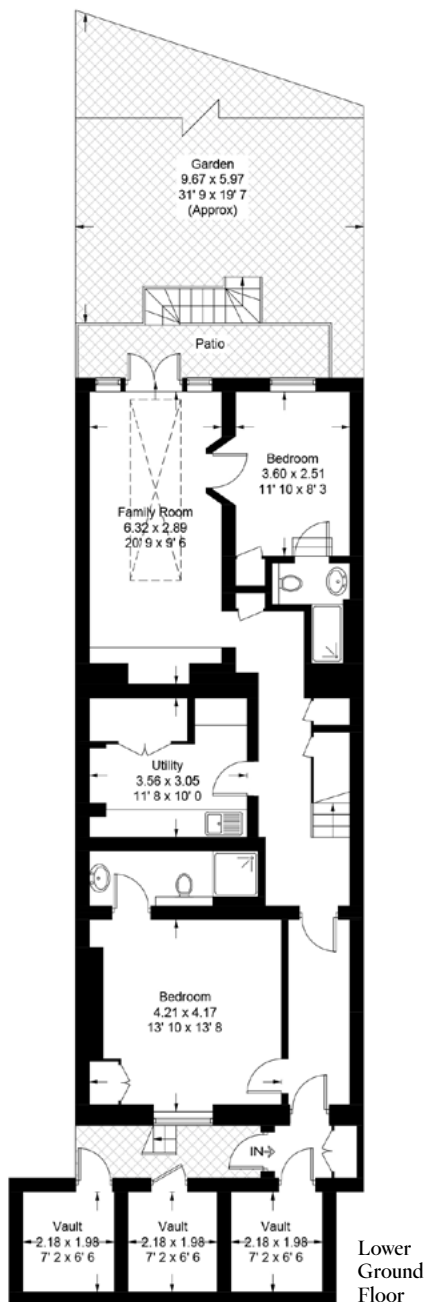


Terms

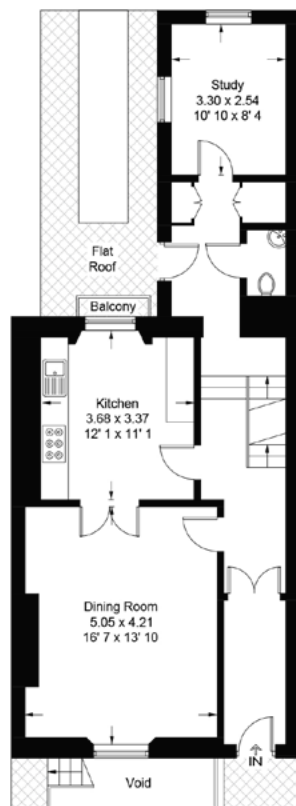
Tenure: Freehold

Local Authority: The Royal Borough of Kensington & Chelsea

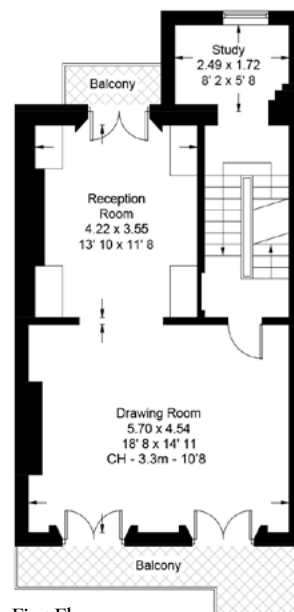
Council Tax: Band H



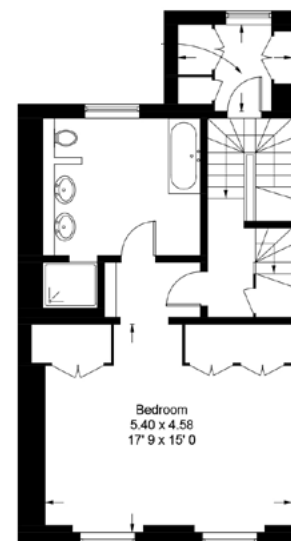
Approximate Gross Internal Area
 3,570 sq ft / 331.7 sq m
 excluding vaults



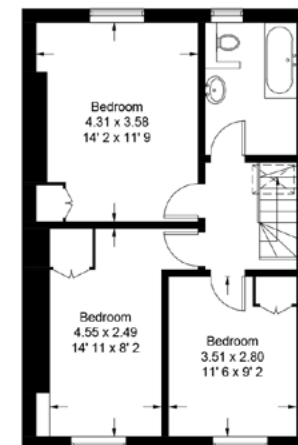
Ground Floor



First Floor



Second Floor



Third Floor

Energy Efficiency Rating	
Current	Potential
92-100 A 81-91 B 69-80 C 55-68 D 39-54 E 21-38 F 1-20 G	
49	79
England & Wales <small>EU Directive 2002/91/EC</small>	

DS Churchill

29 Farm Street London W1J 5RL
 +44 (0)20 7629 7563
 info@dchurchill.com
 dchurchill.com