

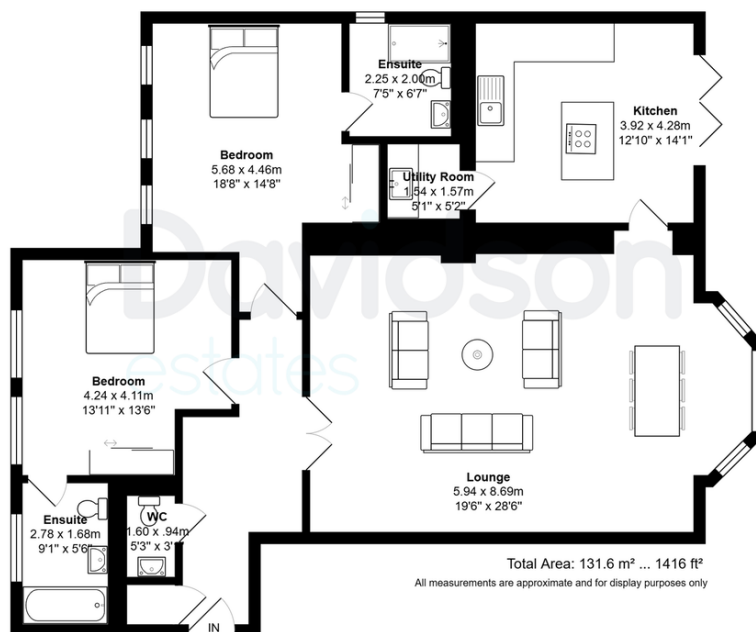


# WESTON HOUSE, 6C NORFOLK ROAD EDGBASTON, BIRMINGHAM, B15 3QD

£1,000,000  
LEASEHOLD

DAVIDSON LUXE LAUNCH | Ex-Show Home by prime developer Spitfire | Luxury Ground Floor Apartment | Private Terrace and Rear Garden | 2x Secure Allocated Parking Spaces | Spacious Open-Plan Living | Designer Kitchen with Integrated Appliances | Two Double Bedrooms | Master Suite with En-Suite Bathroom | Super High Quality Integrated Furniture

# Davidson



Floorplan measurements are for illustrative purpose only. Floor plan by www.sebastiano.co.uk.

Score	Energy rating	Current	Potential
92+	A		
81-91	B		
69-80	C	75 C	75 C
55-68	D		
39-54	E		
21-38	F		

# Davidson

OFFICE  
22 Harborne Road  
Birmingham  
West Midlands  
B15 3AA

0121 455 7727  
info@davidsonestates.co.uk  
www.davidsonestates.co.uk

Agents Note: Whilst every care has been taken to prepare these particulars, they are for guidance purposes only. All measurements are approximate and are for general guidance purposes only and whilst every care has been taken to ensure their accuracy, they should not be relied upon and potential buyers/tenants are advised to recheck the measurements