



Oak Cottage, Nyewood

Guide Price £475,000

Oak Cottage

Nyewood, Petersfield

This attractive three-bedroom character cottage offers a wonderful opportunity to enjoy village life within easy reach of Petersfield and the South Downs National Park. The property combines a comfortable layout with plenty of charm, as well as generous outside space.

On the ground floor, the home features a cosy living room, ideal for relaxing or entertaining, a fitted kitchen with space for family dining, and a well-presented bathroom. Upstairs, there are three bedrooms, each with its own character and natural light, along with a convenient WC.

One of the standout features of the cottage is the large garden to the rear, providing a fantastic space for children to play, gardening enthusiasts to enjoy, or for hosting summer gatherings. The property also benefits from a brick built outbuilding / workshop, log store, garden studio and driveway parking at the front, offering practicality alongside its charm.

Set in the village of Nyewood, this home is surrounded by open countryside while still being within easy reach of Petersfield's shops, schools, mainline station, and local amenities. It offers the best of both worlds — a peaceful rural setting with excellent connections.

Council Tax band: C

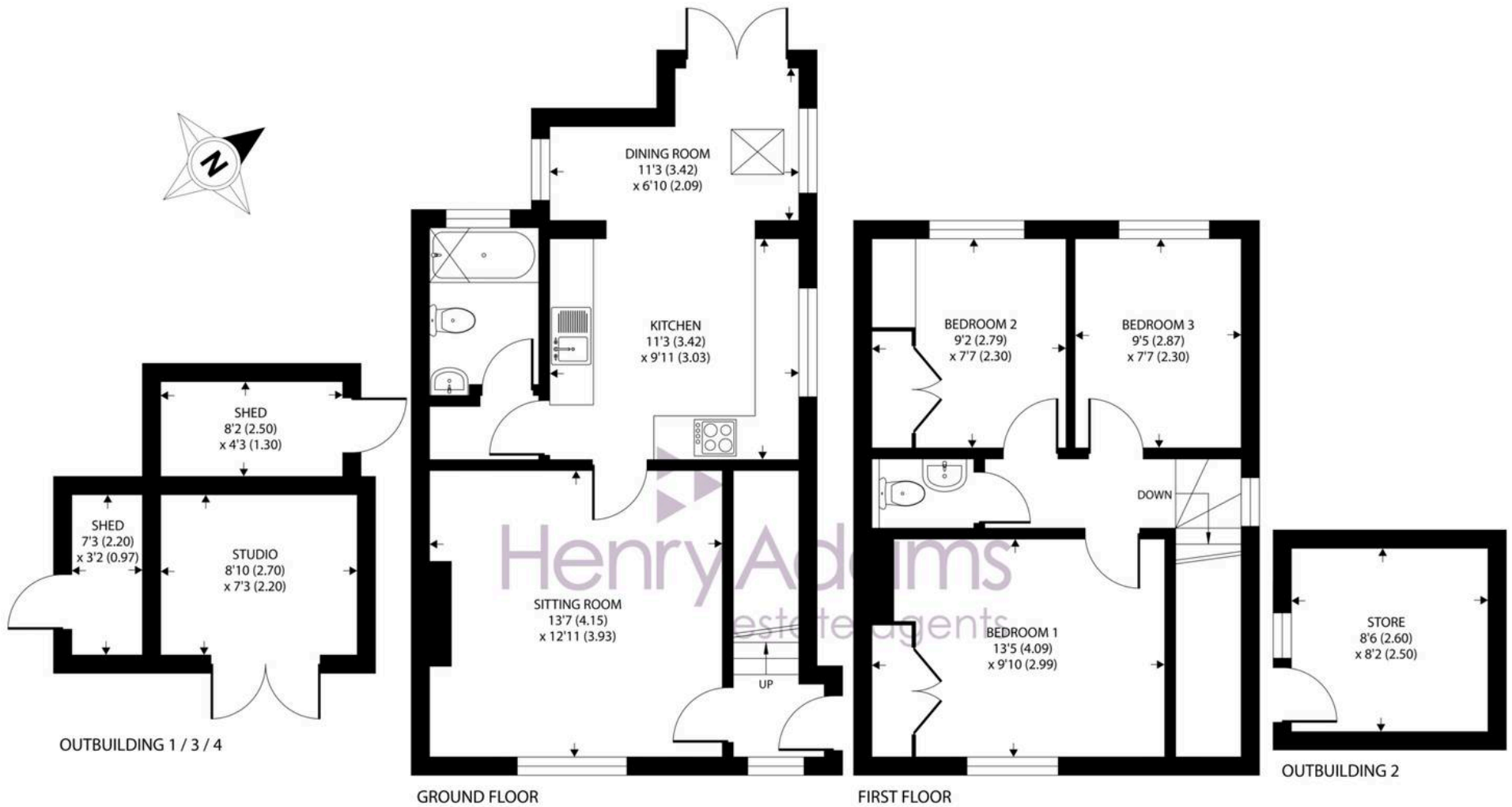
Tenure: Freehold

EPC Energy Efficiency Rating: D

EPC Environmental Impact Rating:

- Three Bedroom Character Cottage.
- Charming Village Location.
- Cosy Living Room with Log Burner.
- Off-Road Parking.





Approximate Area = 854 sq ft / 79.3 sq m
 Outbuildings = 191 sq ft / 15.8 sq m
 Total = 1045 sq ft / 97 sq m

For identification only - Not to scale





Henry Adams - Petersfield

Henry Adams LLP, 24 Lavant Street - GU32 3EW

01730 262801

petersfield@henryadams.co.uk

www.henryadams.co.uk/

Agents Note - Our particulars are for guidance only and are intended to give a fair overall summary of the property. They do not form part of any contract or offer, and should not be relied upon as a statement or representation of fact. Measurements, areas and distances are approximate only. Photographs may include lifestyle shots and pictures of local views. No undertaking is given as to the structural condition of the property, or any necessary consents or the operating ability or efficiency of any service, system or appliance. Please ask if you would like further information, especially before you travel to the property.