



21 Highfield Road, Eston
£165,000



21 Highfield Road

Eston, Middlesbrough

Step Into Pure Style And Comfort With This Absolutely Stunning 2-Bedroom Semi-Detached Bungalow, A True Showstopper Inside And Out!

Council Tax band: B

Tenure: Freehold

EPC Energy Efficiency Rating: E

EPC Environmental Impact Rating: E

- Stylish 2-Bedroom Semi-Detached Bungalow – Modern and beautifully presented throughout, offering the perfect blend of comfort and luxury
- Spacious Ground Floor Bedroom & Main Bathroom – Ideal for accessibility and convenience, with a high-quality finish throughout
- Master Suite Upstairs With Private W/C – A peaceful retreat with a sense of privacy and elevated views
- Stunning Entertaining Kitchen/Dining Area – Featuring integrated appliances, a bespoke bar, and bi-folding doors opening onto the garden
- Dream Garden Oasis – Complete with decking, pergola, tranquil water feature, pond with goldfish, and a built-in hot tub included in the sale
- Modern Resin Driveway To The Front – Offering excellent curb appeal and off-road parking, complementing the home's stylish exterior



Hall

Lounge

16' 7" x 11' 8" (5.06m x 3.55m)

Bathroom

6' 8" x 5' 9" (2.03m x 1.76m)

Bedroom 2

10' 0" x 8' 1" (3.06m x 2.46m)

Open Plan Kitchen/Dining

22' 1" x 12' 8" (6.73m x 3.87m)

Bedroom 1

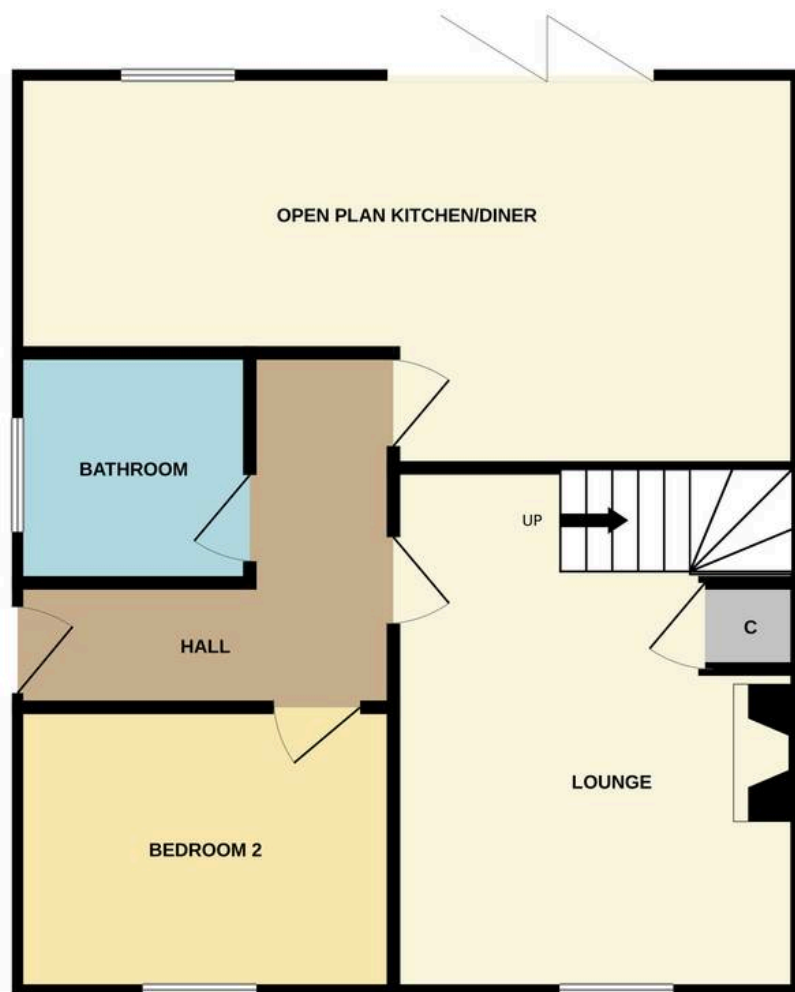
16' 11" x 12' 3" (5.16m x 3.74m)

w/c

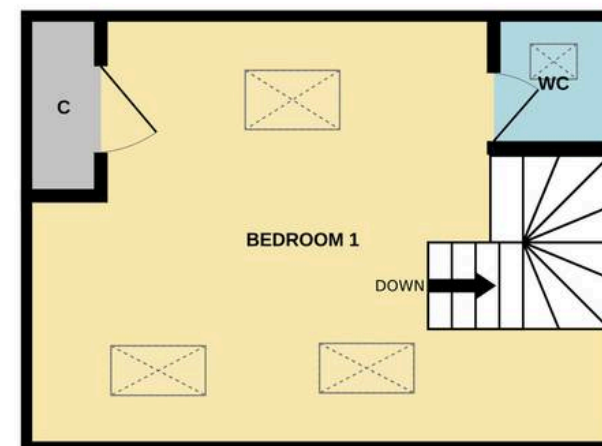
3' 6" x 3' 5" (1.06m x 1.05m)



GROUND FLOOR
588 sq.ft. (54.6 sq.m.) approx.

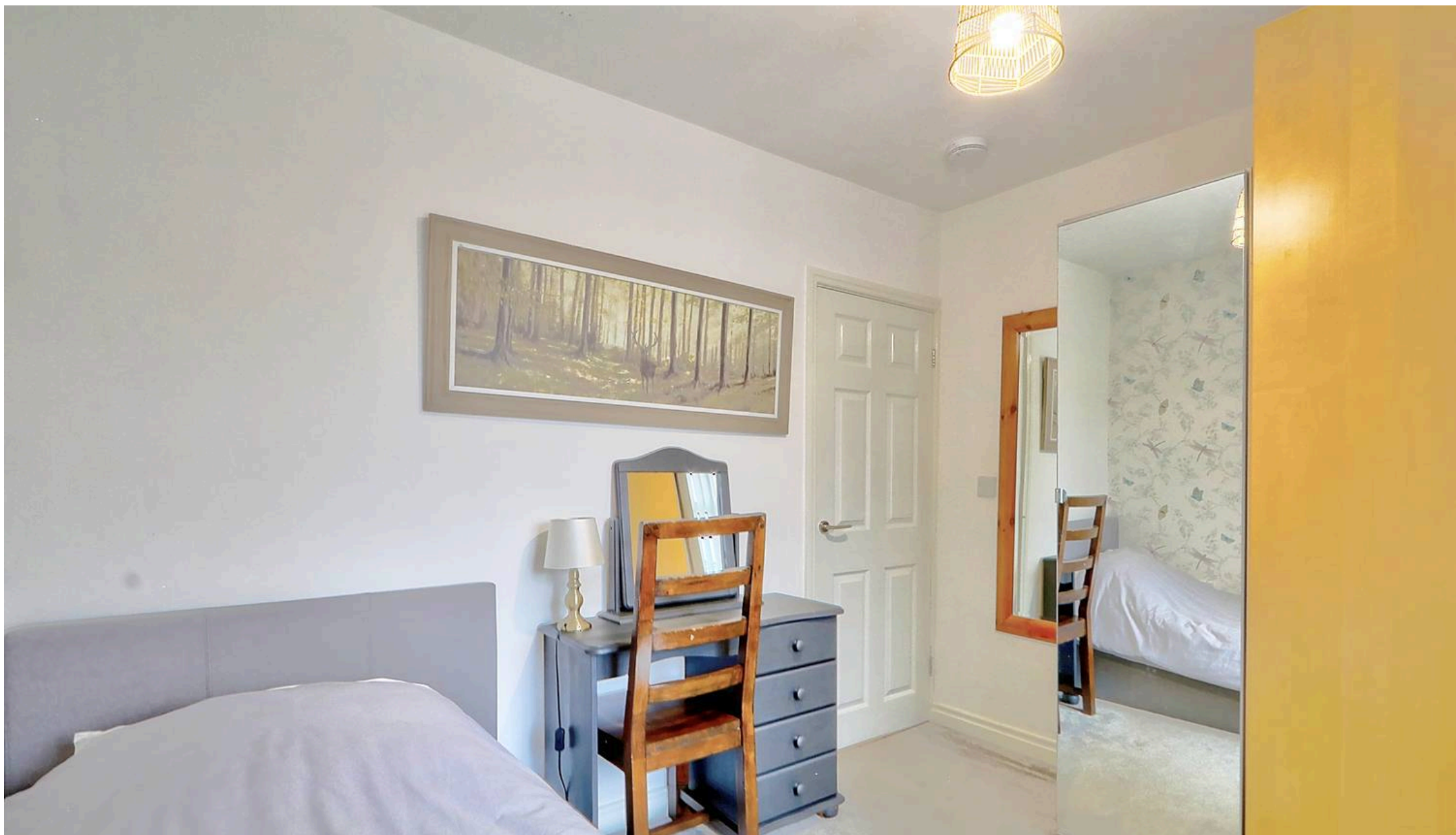


1ST FLOOR
211 sq.ft. (19.6 sq.m.) approx.



TOTAL FLOOR AREA : 799 sq.ft. (74.2 sq.m.) approx.

Whilst every attempt has been made to ensure the accuracy of the floorplan contained here, measurements of doors, windows, rooms and any other items are approximate and no responsibility is taken for any error, omission or mis-statement. This plan is for illustrative purposes only and should be used as such by any prospective purchaser. The services, systems and appliances shown have not been tested and no guarantee as to their operability or efficiency can be given.
Made with Metropix ©2025



G.R. Estates

19 Bishop Street, Stockton-On-Tees - TS18 1SY

01642 378022 • enquiries@gr-estates.co.uk • www.gr-estates.co.uk/