







Spacious 6-Bedroom Home – Prime Location on Thornton Avenue, West Drayton

Hiltons Estates proudly presents this well-maintained and generously sized 6-bedroom residence, ideally situated on the sought-after Thornton Avenue in West Drayton. Offering a versatile layout and substantial living space, this property is perfectly suited for large families, multi-generational living, or as a high-yield rental investment.

Conveniently located just a short walk from West Drayton Station (Elizabeth Line) and with easy access to the M4, M25, and Heathrow Airport, this home provides excellent connectivity for commuters and frequent travellers.

A rare opportunity in a prime location — early viewing is highly recommended!



6 Spacious Bedrooms – Ideal for families or investors

Well-Presented Throughout – Ready to move in or let

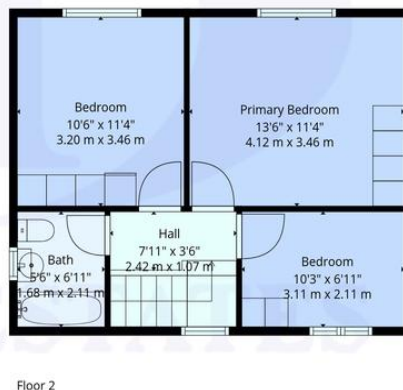
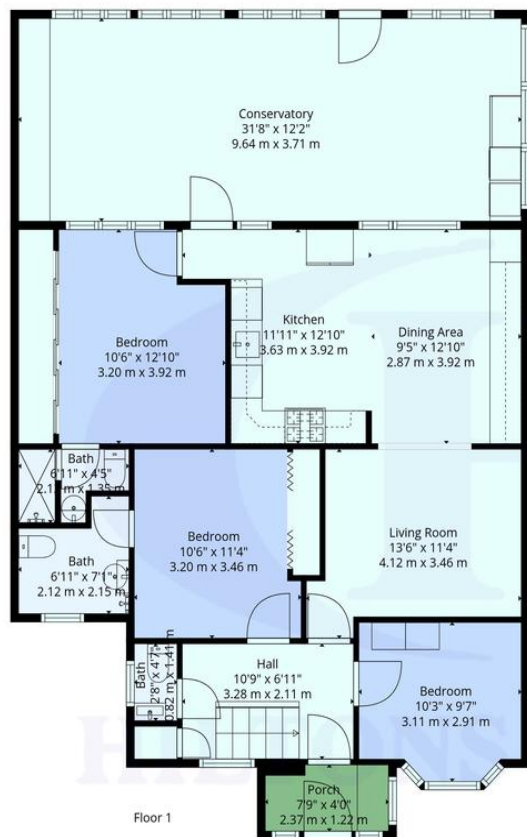
Versatile Layout – Perfect for multi-generational living

Walking Distance to West Drayton Station (Elizabeth Line)

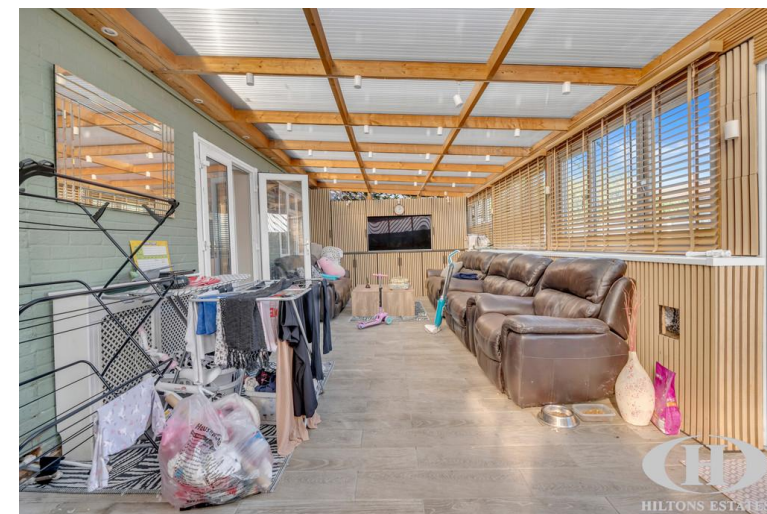
Close to Heathrow Airport – Great for frequent flyers







**TOTAL: 1787 sq. ft, 166 m2**  
**FLOOR 1: 1334 sq. ft, 124 m2, FLOOR 2: 453 sq. ft, 42 m2**  
**EXCLUDED AREAS: PORCH: 31 sq. ft, 3 m2, WALLS: 132 sq. ft, 12 m2**



Score	Energy rating	Current	Potential
92+	A		
81-91	B		82 B
69-80	C	73 C	
55-68	D		
39-54	E		
21-38	F		
1-20	G		



loor Plans Are Provided For General Guidance And Illustrative Purposes Only. While Every Effort Has Been Made To Ensure Accuracy, Measurements And Layouts Are Approximate And Not To Scale. These Plans Should Not Be Relied Upon For Valuation, Legal, Or Mortgage Purposes. We Recommend All Interested Parties Carry Out Their Own Inspections And Assessments

**Hiltons Estates, 137 Western Road**  
**Southall, UB2 5HN**

**www.hiltons-estates.com**  
**email: harvin@hiltons-estates.com**  
**0208 867 9555 / 07961 527301**

Agents Note: Whilst every care has been taken to prepare these sales particulars, they are for guidance purposes only. All measurements are approximate are for general guidance purposes only and whilst every care has been taken to ensure their accuracy, they should not be relied upon and potential buyers are advised to recheck the measurements.