





## 6 Quoilers Court

Blackburn, Bathgate

Welcome to Quoilers Court, an immaculate and truly walk-in ready three-bedroom detached home set within a peaceful and highly desirable corner of Blackburn. This exceptional property offers a perfect blend of contemporary style, generous proportions and thoughtful design, providing everything needed for comfortable modern living.


On arrival, the home immediately impresses with its double driveway and integrated garage, offering ample off-street parking. Stepping inside, you are welcomed into a bright and inviting hallway that sets the tone for what lies ahead. The wooden flooring, bright neutral tones and stylish finishes create an immediate sense of warmth and sophistication.

The spacious lounge is a standout feature, flooded with natural light from a large front-facing window. It can comfortably accommodate multiple large sofas and freestanding furniture, while its generous layout allows the new owner to be as creative as they wish with interior styling. A striking feature wall completes the space, making it perfect for relaxing or entertaining.

To the rear of the home lies the impressive open-plan kitchen and dining area, the true heart of this property. Recently upgraded, it features sleek modern cabinetry in popular tones, excellent storage and worktop space, and a host of integrated appliances including a dishwasher, fridge, fridge-freezer, hob and extractor fan. The breakfast bar provides an additional informal dining option, while the open dining area can comfortably seat up to eight guests. The space is partly tiled and finished to a high standard, enhanced by recently installed French doors which open out onto the rear garden, creating a seamless connection between inside and out.

Upstairs, the home continues to impress with fresh carpets and bright, welcoming décor. All three bedrooms are of generous proportions, easily accommodating double to king-size beds, particularly bedrooms one and two. The main bedroom is an exceptional space, large enough for a super king-size bed with room for freestanding furniture. Built-in storage adds practicality, and the room enjoys a private aspect that is not overlooked. It is complemented by a recently upgraded, fully tiled en suite featuring a luxurious walk-in shower that perfectly combines practicality and style.

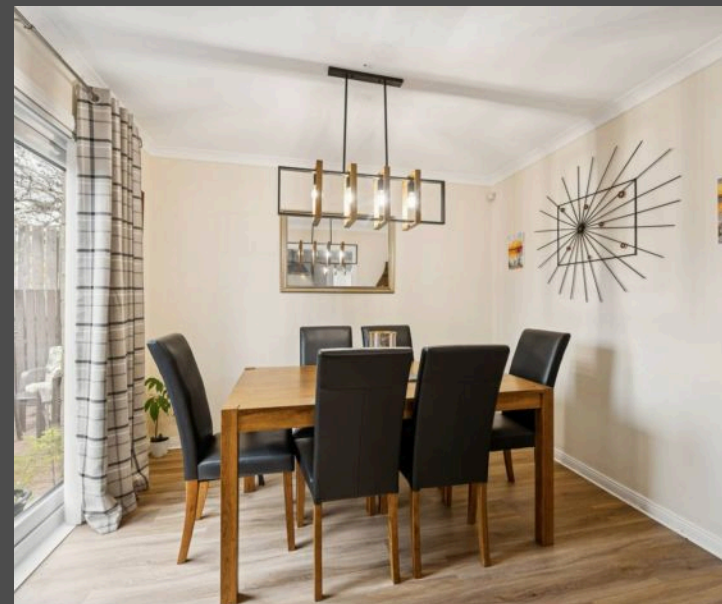
The second bedroom also comfortably accommodates a double or king-size bed and is currently used as a dressing area, once again highlighting the built-in storage as a key feature. Its neutral, stylish décor enhances the sense of space and calm. The third bedroom, currently set up as a child's room, has a single bed but could accommodate a small double if required. This flexible space could equally serve as a home office, dressing room or walk-in wardrobe.

The family bathroom completes the upper floor and continues the home's elegant theme. It is spacious and stylish, partly tiled, and features a full bath with an overhead shower. It is a superb three-piece suite









FRONT GARDEN

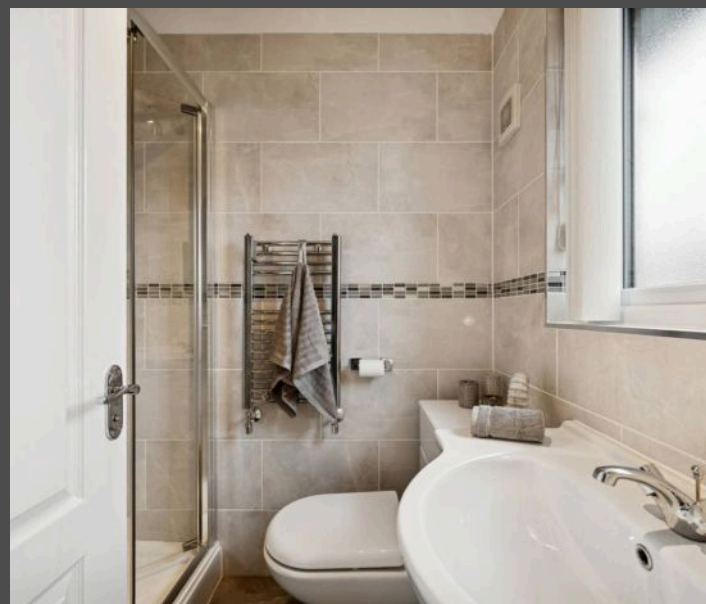
REAR GARDEN

DRIVEWAY

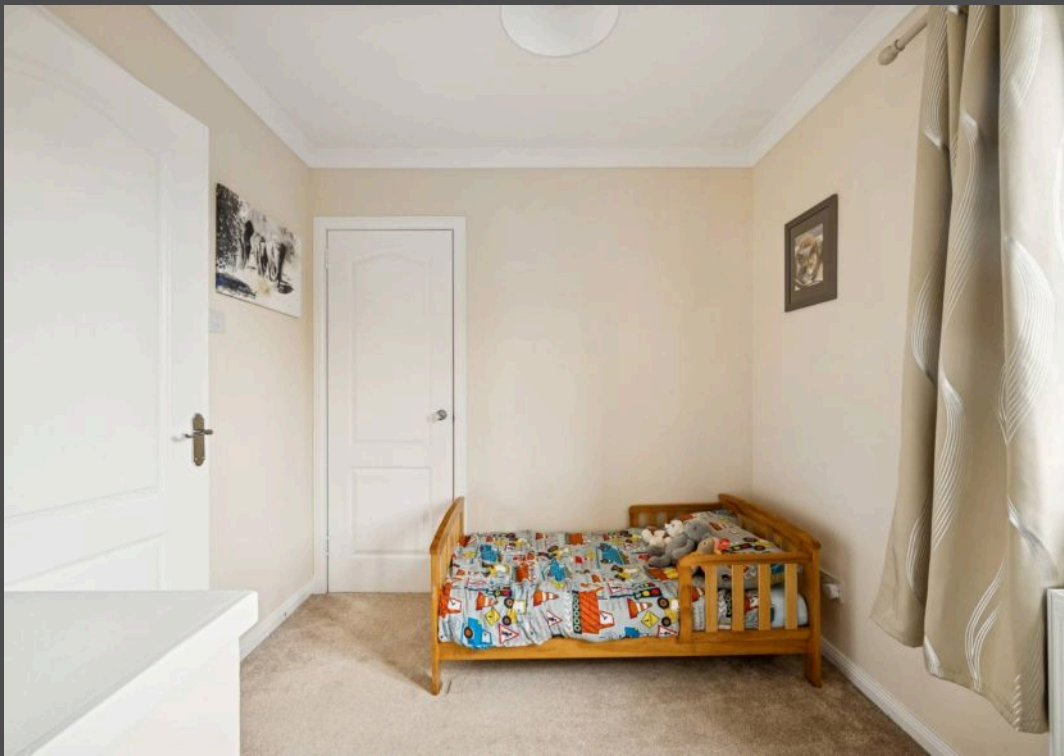
2 Parking Spaces

GARAGE

Single Garage



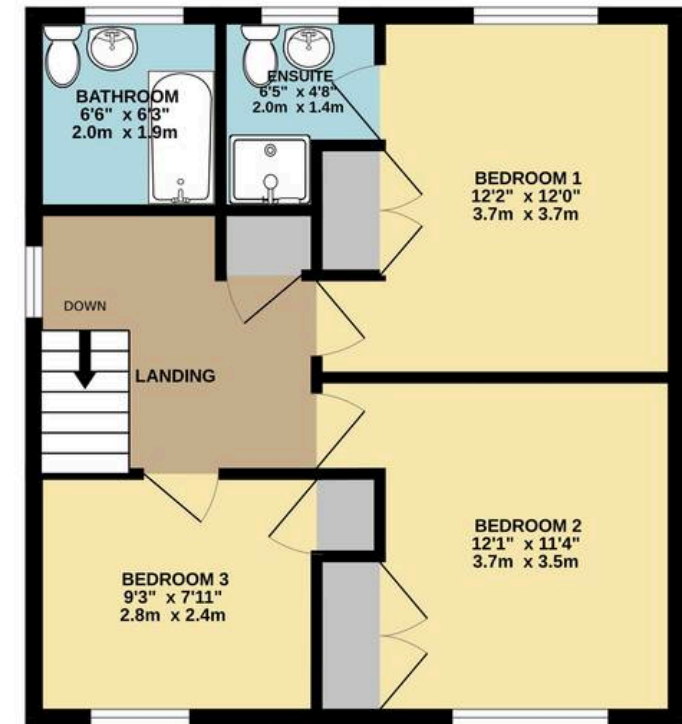




GROUND FLOOR



1ST FLOOR



TOTAL FLOOR AREA : 1200sq.ft. (111.5 sq.m.) approx.

Whilst every attempt has been made to ensure the accuracy of the floorplan contained here, measurements of doors, windows, rooms and any other items are approximate and no responsibility is taken for any error, omission or mis-statement. This plan is for illustrative purposes only and should be used as such by any prospective purchaser. The services, systems and appliances shown have not been tested and no guarantee as to their operability or efficiency can be given.

Made with Metropix ©2025





## Bridges Properties

15 Shairps Business Park, Livingston - EH54 5FD

01501519435

[info@bridges-properties.co.uk](mailto:info@bridges-properties.co.uk)

[www.bridges-properties.co.uk/](http://www.bridges-properties.co.uk/)

