





Hiltons Estates is delighted to present this spacious 3-bedroom family home, ideally located on London Road, Slough — within the sought-after grammar school catchment area.

This well-presented property offers generous living space, featuring a large family kitchen, a bright and airy reception room, and three modern bathrooms. The master bedroom includes a walk-in wardrobe, adding a touch of luxury.

With potential to create an annex, this home is perfect for growing or extended families. Additional benefits include a private garden, garage, and off-street parking.

A fantastic opportunity in a prime location — early viewing is highly recommended.



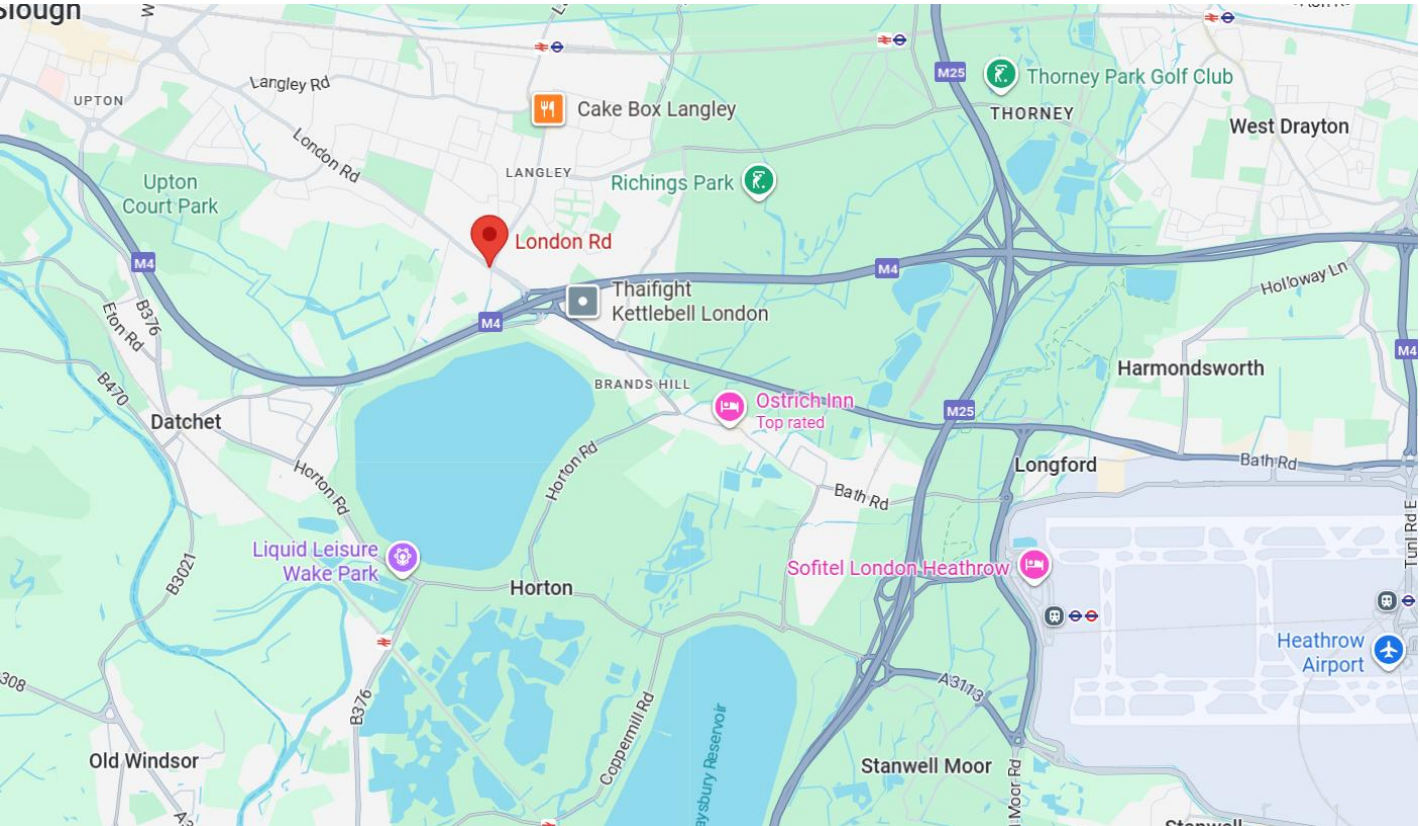
Spacious Family Home

Large, Well-Equipped Family Kitchen

Generously Sized Reception Room

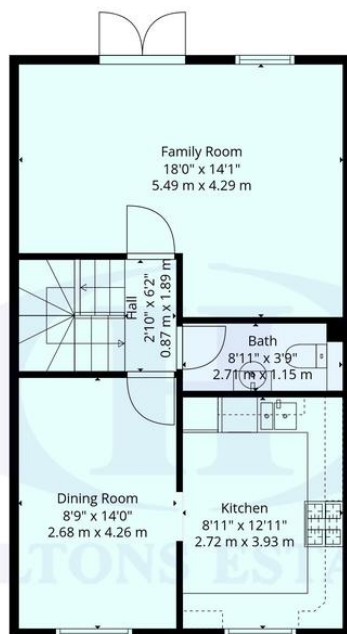
Garage & Additional Off-Street Parking

Private Rear Garden

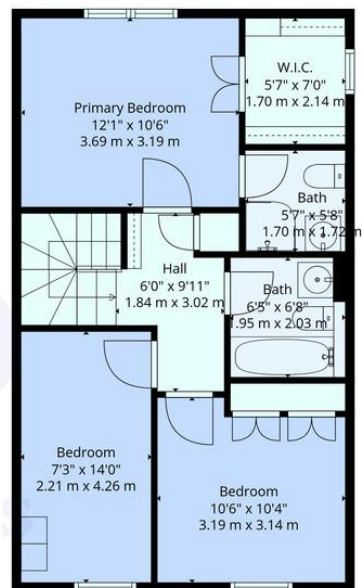




Floor 1



Floor 2



Floor 3



floor Plans Are Provided For General Guidance And Illustrative Purposes Only. While Every Effort Has Been Made To Ensure Accuracy, Measurements And Layouts Are Approximate And Not To Scale. These Plans Should Not Be Relied Upon For Valuation, Legal, Or Mortgage Purposes. We Recommend All Interested Parties Carry Out Their Own Inspections And Assessments

TOTAL: 1517 sq. ft, 142 m2
FLOOR 1: 383 sq. ft, 36 m2, FLOOR 2: 567 sq. ft, 53 m2, FLOOR 3: 567 sq. ft, 53 m2
EXCLUDED AREAS: GARAGE: 139 sq. ft, 13 m2, WALLS: 124 sq. ft, 11 m2

Score	Energy rating	Current	Potential
92+	A		
81-91	B		85 B
69-80	C	77 C	
55-68	D		
39-54	E		
21-38	F		
1-20	G		

Hiltons Estates, 137 Western Road
Southall, UB2 5HN

www.hiltons-estates.com
email: harvin@hiltons-estates.com
0208 867 9555 / 07961 527301

Agents Note: Whilst every care has been taken to prepare these sales particulars, they are for guidance purposes only. All measurements are approximate are for general guidance purposes only and whilst every care has been taken to ensure their accuracy, they should not be relied upon and potential buyers are advised to recheck the measurements.