



Berwick Place

+44 (0) 1223 508050

[Lettings@cookecurtis.co.uk](mailto:Lettings@cookecurtis.co.uk)

[www.cookecurtis.co.uk](http://www.cookecurtis.co.uk)

Contemporary two bedroom flat set on the second floor of Berwick Place in Trumpington Meadows a highly sought-after development in Cambridge, CB2.

£1,750 pcm

Berwick Place, Cambridge,  
CB2 9EU



Situated on the second floor of a modern and well-maintained development, this beautifully presented two-bedroom furnished apartment offers bright, contemporary living in a desirable location.

The property comprises a spacious open-plan kitchen, dining, and living area, with a modern fitted kitchen including appliances such as an oven, hob, fridge freezer, dishwasher, and washing machine. The living area is furnished with a sofa, coffee table, rug, TV unit, and dining table with chairs, and opens out onto a private balcony.

The principal bedroom features a double bed, bedside tables, mirrored chest of drawers, and fitted curtains, as well as an en-suite shower room. The second double bedroom is currently set up as a home office with two desks, office chairs, and a sofa bed, offering excellent flexibility as a guest room or workspace.

A stylish main bathroom with bath and overhead shower completes the accommodation. The property also benefits from gas central heating, double glazing, and allocated parking.

Located close to local shops, amenities, and transport links, the apartment provides modern, comfortable living in a peaceful yet well-connected area.

Offered fully furnished as seen in the photographs. Available now. Sorry no pets.







63 sqm / 681 sqft

---

2 beds, 1 recep, 2 bath

---

EPC - B / 83

---

Council tax band - C

---

Gas central heating

---

Allocated parking

---

Furnished

---

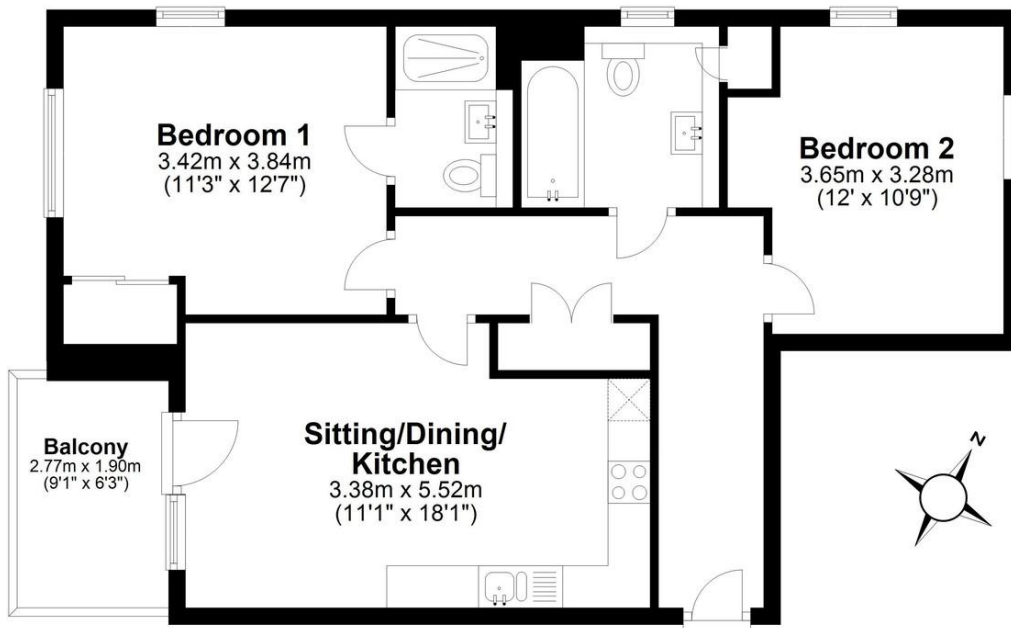
Available November 2025

---

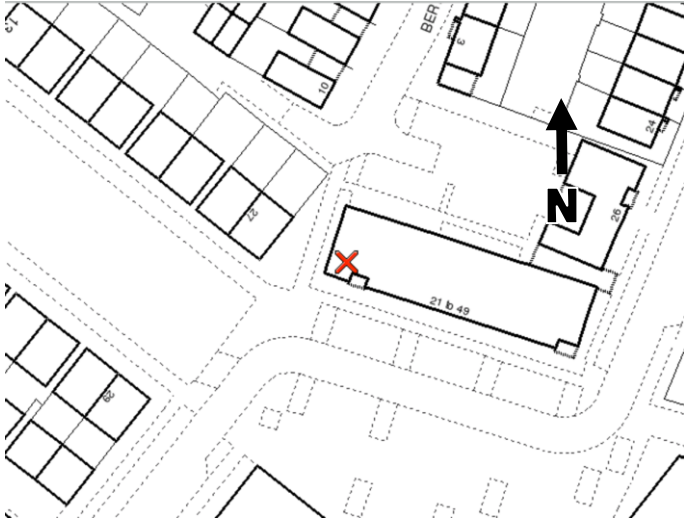


## First Floor

Approx. 63.3 sq. metres (681.1 sq. feet)



Total area: approx. 63.3 sq. metres (681.1 sq. feet)



Trumpington is a thriving, fast growing part of the city that still manages to retain its village identity and sense of community. It is exceptionally well located for access into the Addenbrooke's campus, out to the M11 and into the city by car, bus, guided bus, by bicycle on one of several purpose-built cycle routes, or even an enthusiastic walk. The city's mainline station can be easily reached along the guided busway cycleway without having to mix with car traffic at all. The area has three primary schools and a brand new state-of-the-art secondary school that opened in 2016 bringing with it excellent sporting facilities including a private members' gym. A number of Private Schools are within cycling distance. There are also various restaurants, pubs, shops, a post office, hairdresser, surgery, pharmacy, library, Waitrose supermarket and two new country parks.

COOKE  
CURTIS  
& CO