



4 Booth Close, Snodland

Guide Price £370,000

eden
estates

4 Booth Close

Snodland, Snodland

GUIDE PRICE £370,000 - £390,000 - Three bed semi-detached house near amenities. En-suite bedroom with wardrobes. Bright 18.1ft lounge/diner. Allocated parking, onsite gym. Council Tax band: D

Tenure: Freehold

- Three bedrooms
- En-suite
- Built in wardrobes
- 18.1ft Lounge/diner
- Well kept garden with decking
- Two allocated parking spaces
- On site gym included with service charge
- Well located for local amenities
- Ofsted Outstanding primary school catchment area



eden
estates

Lounge / Diner

18' 1" x 15' 7" (5.52m x 4.74m)

Kitchen

11' 5" x 8' 0" (3.48m x 2.44m)

Bedroom 1

11' 1" x 8' 8" (3.39m x 2.63m)

Bedroom 2

8' 4" x 7' 0" (2.54m x 2.14m)

Bedroom 3

11' 9" x 12' 3" (3.58m x 3.74m)

Bathroom

En-suite

Wc

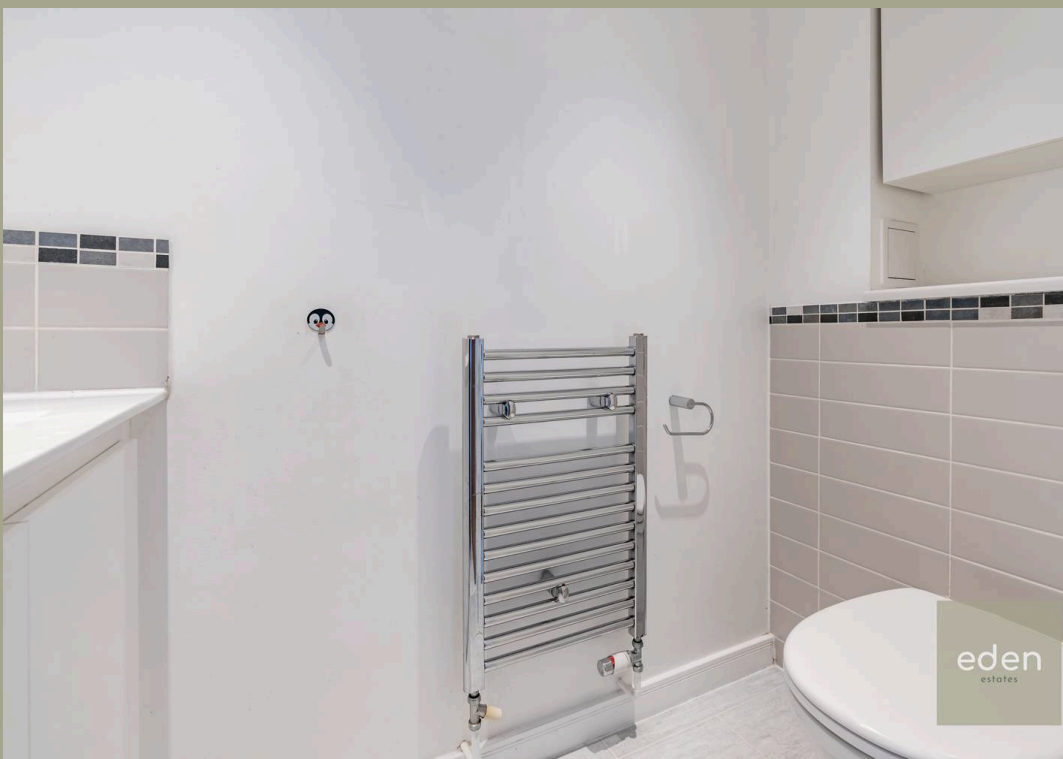




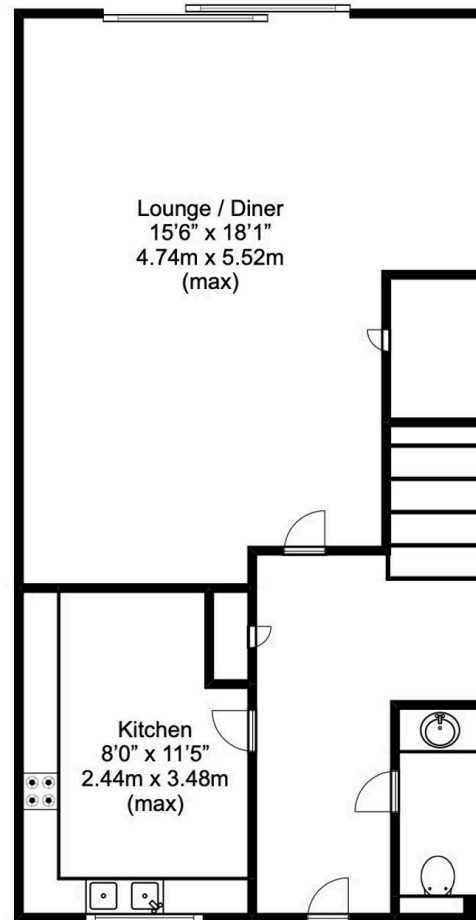
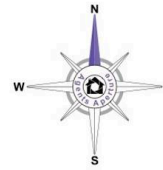
GARDEN

ALLOCATED PARKING

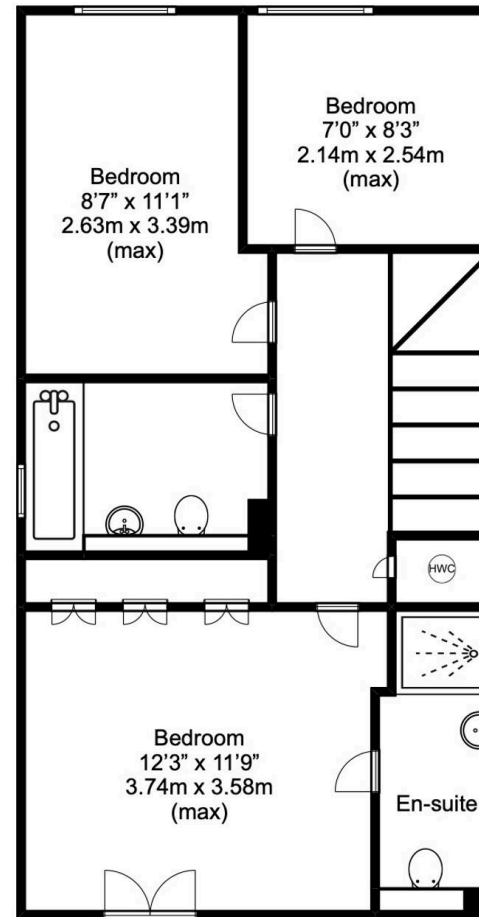
2 Parking Spaces



Approx. total
floor area
930 SQ.FT.
86.44 SQ.M.



Ground Floor
Approx. floor area
465 SQ.FT.
43.22 SQ.M.



First Floor
Approx. floor area
465 SQ.FT.
43.22 SQ.M.

Disclaimer

This plan is for illustrative purposes only and no responsibility is taken for any error, omission or misstatement. The appliances shown have not been tested and no guarantee as to their operability or efficiency can be given. Measurements have been added as a guide to prospective buyers only, are not precise, not to scale, may have been taken from the widest area and may include wardrobe / cupboard space. Garages and outbuildings may not be represented in their actual location in relation to the property. Compass point, measurements and total areas should be considered inaccurate and checked as no guarantee is given to their accuracy. Buyers are strongly advised to take their own measurements and compass bearing.



Eden Estates

781-783 London Road, Larkfield - ME20 6DE

01732 795162

hey@eden-estates.co.uk

www.eden-estates.co.uk



eden
estates