

The Maple Meadow View

Two-bedroom home, sleeps four



2 | 

1 | 

1 | 



Artist's impression

Key features

- Two double bedrooms
- Separate living room
- Patio doors to garden
- Downstairs W.C.
- Open plan kitchen and dining room
- Driveway parking



The Maple

Available plots

Shared ownership

6, 7, 8, 9, 21, 26,
27, 40, 42, 43, 45,
46, 49, 50, 51, 52,
53, 54, 55, 62, 65

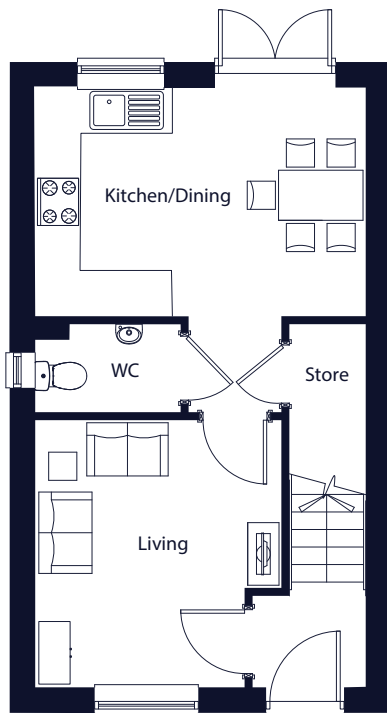
Watermills Road, Newcastle-under-Lyme, ST5 6AT

A stunning collection of 67 homes designed for every lifestyle

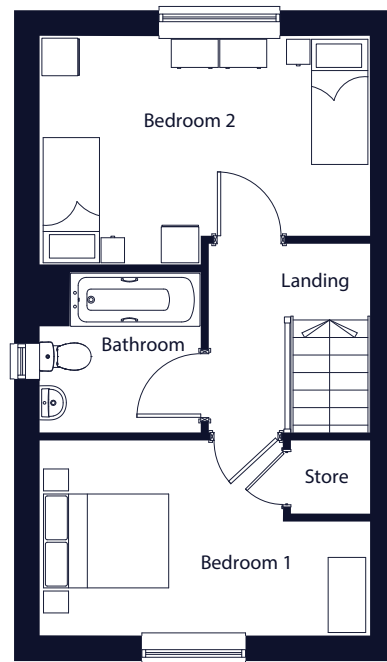
The Maple Meadow View

Two-bedroom home, sleeps four

Ground floor



First floor



Room	Metric	Imperial
Kitchen/Dining	4.4 x 3.0	14'5" x 10'0"
Lounge	3.3 x 3.5	10'10" x 11'7"
W.C.	2.0 x 1.2	6'6" x 3'11"

Room	Metric	Imperial
Bedroom 1	4.4 x 3.0	14'5" x 10'0"
Bedroom 2	4.4 x 2.6	14'5" x 8'6"
Bathroom	2.2 x 2.1	7'2" x 7'0"

Total size **68m² / 731.9ft²**

Get in touch

 01782 649306

 [yourhousinggroup.co.uk](https://www.yourhousinggroup.co.uk)

 @yourhousing

 yourhousinggroup