



7 Pathfield Cottages Broadsole Lane, West Hougham - CT15 7BW

Guide Price **£450,000**

Approximate Gross Internal Area (Excluding Cabin & Outbuilding) = 184 sq m / 1979 sq ft
 Cabin & Outbuilding = 22 sq m / 241 sq ft

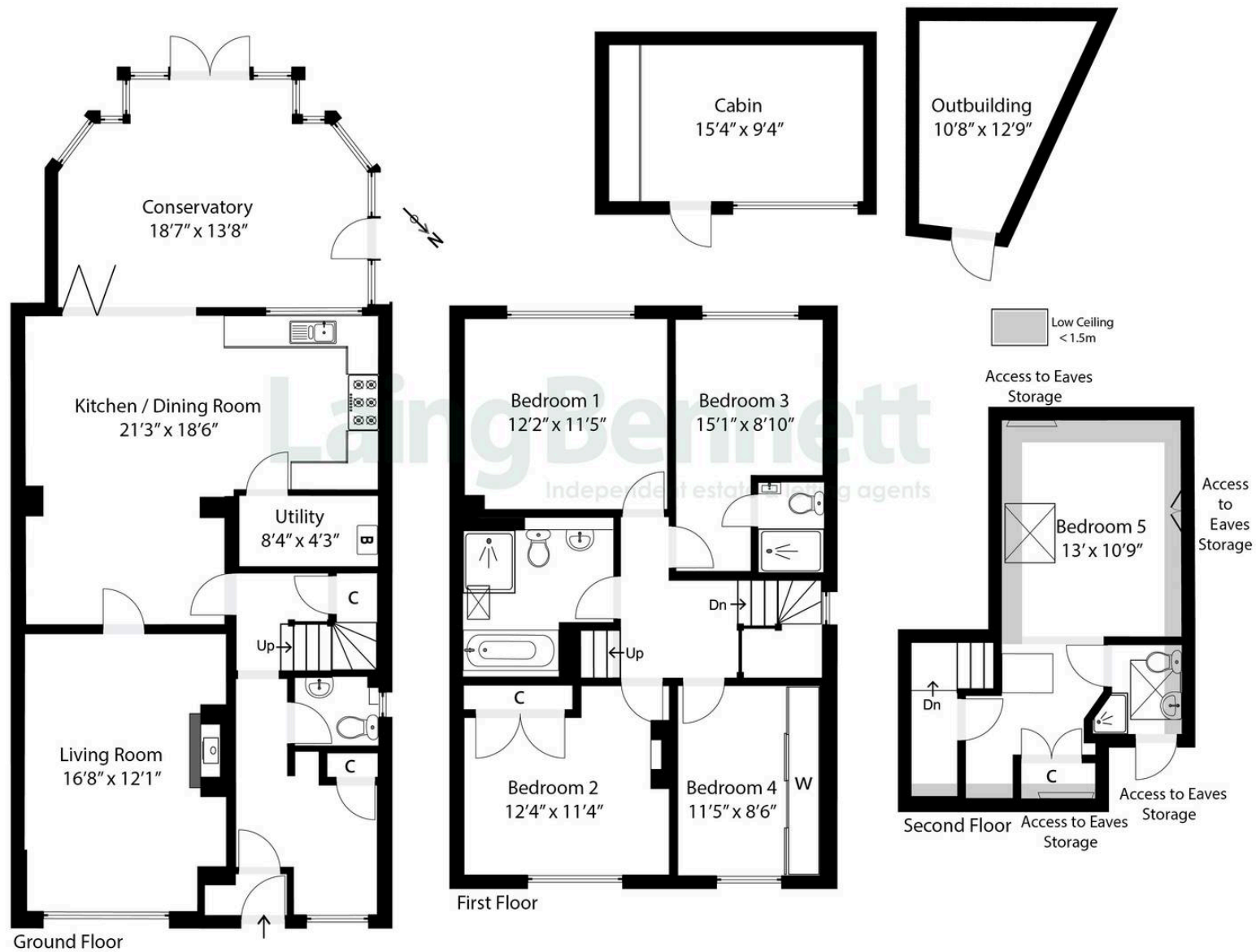


Illustration for Identification purposes only. Measurements are approximate. Dimensions given are between the widest points.
 Not to scale. Outbuildings are not shown in actual location.
 © Unauthorised reproduction prohibited - chriskemps@hotmail.com



7 Pathfield Cottages Broadsole Lane

West Hougham, Dover

Welcome to this stunning 5-bedroom, 3-bathroom semi-detached house nestled in the charming village of West Hougham, offering the perfect blend of spacious family living, serene countryside surroundings and backing on to the Village Green. The property benefits from off road driveway parking and glorious recently landscaped good size garden with cabin and store. This beautifully maintained property boasts modern comforts, making it an ideal home for growing families or those seeking ample space to work and relax. The property further benefits from under floor heating to the ground floor.

Council Tax band: C

Tenure: Freehold

EPC Energy Efficiency Rating: C

EPC Environmental Impact Rating: C











Laing Bennett

Laing Bennett Ltd, The Estate Office, 8 Station Road – CT18 8HP

01303 863393 • info@laingbennett.co.uk • www.laingbennett.co.uk/

DISCLAIMER – These details are for guidance only and do not form part of an offer or contract. Measurements are approximate. Laing Bennett Ltd and the Vendor/Landlord accept no liability. Services and appliances are untested. Applicants must make their own checks. Items shown may not be included. No staff have authority to give warranties.