



3 Fleetway Court New Lydd Road, Camber
£130,000



3 Fleetway Court New Lydd Road

Camber, Rye

Council Tax band: A

Tenure: Leasehold

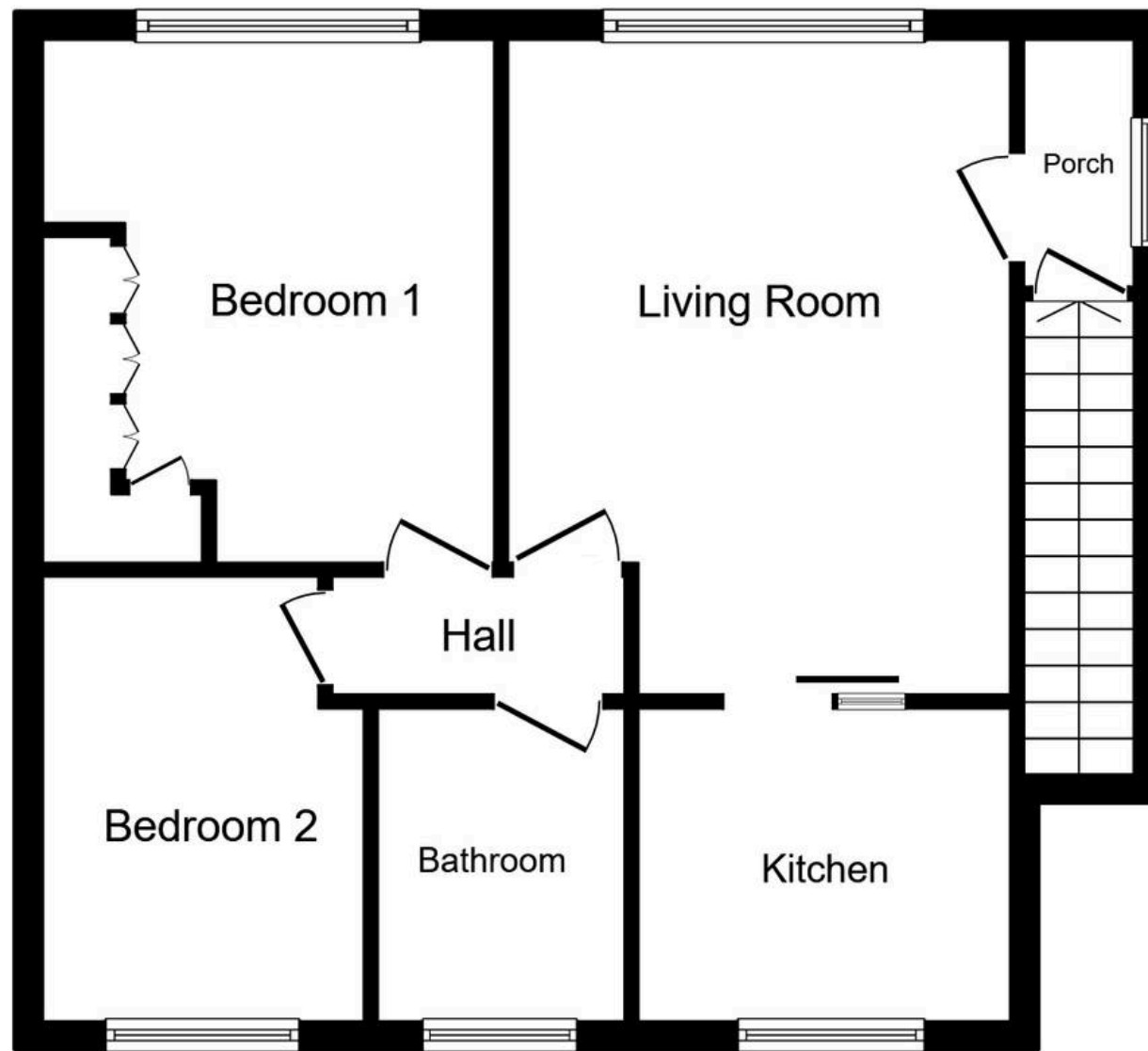
EPC Energy Efficiency Rating: D

EPC Environmental Impact Rating: E

- New 125 Year Lease
- Fantastic Rental Investment with Potential Gross Yield of 8.54%
- Chain Free
- Superb First Time Purchase
- Two Bedrooms
- First Floor Flat
- Walking Distance to the Beach
- Communal Gardens
- Communal Parking Area
- Separate Storage Shed







Floor Plan



Nested Rye

01797 903045 • barnaby.osborne@nested.com • nested.com/barnaby-osborne

