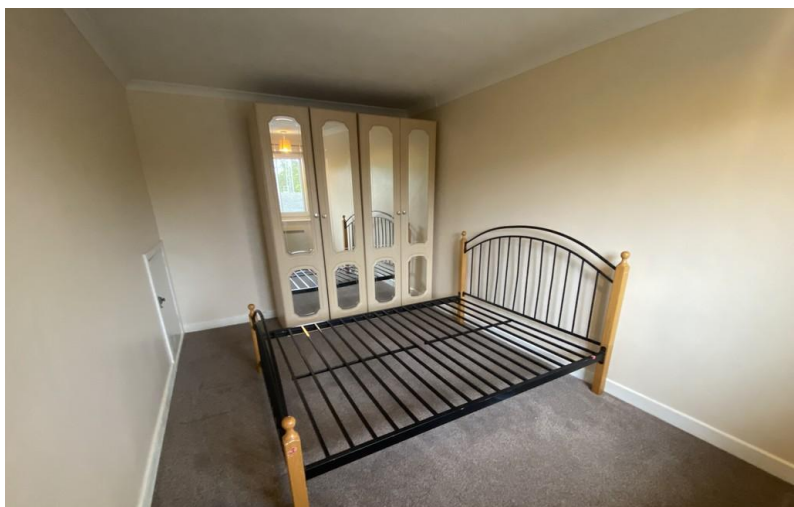


TO LET



4 Claudeen Court

1 Bedroom, 1 Bathroom, Flat

£850 pcm



4 Claudeen Court

Flat,
1 bedroom, 1 bathroom

£850 pcm

Date available: Available Now

Deposit: £1,009.61

Part Furnished

Council Tax band: A

- Available 17th November 2025
- Neutral decor throughout
- Newly decorated
- Not suitable for pets
- Oven and washing machine, bed and wardrobe included
- On road parking
- Close to shops and amenities

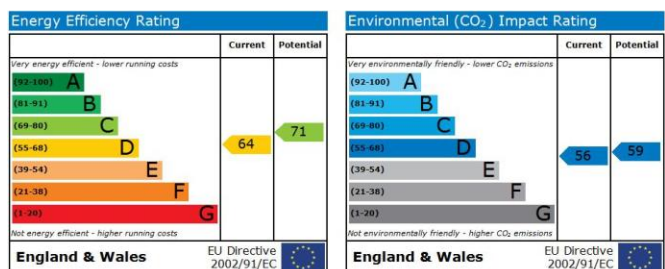
HALLWAY 4' 04" x 2' 07" (1.32m x 0.79m) BUILT IN WARDROBE

BATHROOM 5' 11" x 5' 00" (1.8m x 1.52m) White bath with electric show, WC, sink. Window and extractor fan.

LOUNGE 14' 06" x 10' 02" (4.42m x 3.1m) Carpet, electric heater. Window to front aspect. Telephone and TV points. Door to balcony.

BEDROOM 14' 01" x 9' 02" (4.29m x 2.79m) Carpet, electric heater , window to balcony. Wardrobe with mirrors and double bed frame included.

KITCHEN 6' 01" x 5' 11" (1.85m x 1.8m) Range of wall units, sink, electric cooker, oven with grill. Fridge freezer and washing machine included. Window to front aspect.





Martin & Co Chandler

46 London Road • • Southampton • SO15 2AH

T: 02380 390012 • E: chandlersford@martinco.com <http://www.martinco.com>

02380 390012



Accuracy: References to the Tenure of a Property are based on information supplied by the Seller. The Agent has not had sight of the title documents. A Buyer is advised to obtain verification from their Solicitor. Items shown in photographs including but not limited to carpets, fixtures and fittings are not included unless specifically mentioned within the sales particulars. They may however be available by separate negotiation. Buyers must check the availability of any property and make an appointment to view before embarking on any journey to see a property. No person in the employment of the agent has any authority to make any representation about the property, and accordingly any information given is entirely without responsibility on the part of the agents, sellers(s) or lessors(s). Any property particulars are not an offer or contract, nor for part of one. **Sonic / laser Tape:** Measurements taken using a sonic / laser tape measure may be subject to a small margin of error. **All Measurements:** All Measurements are Approximate. **Services Not tested:** The Agent has not tested any apparatus, equipment, fixtures and fittings or services and so cannot verify that they are in working order or fit for the purpose. A Buyer is advised to obtain verification from their Solicitor or Surveyor.