



SAB
ESTATES

Dorset Court, 21 Broadmead Road
£230,000

SAB
ESTATES



Dorset Court

Northolt

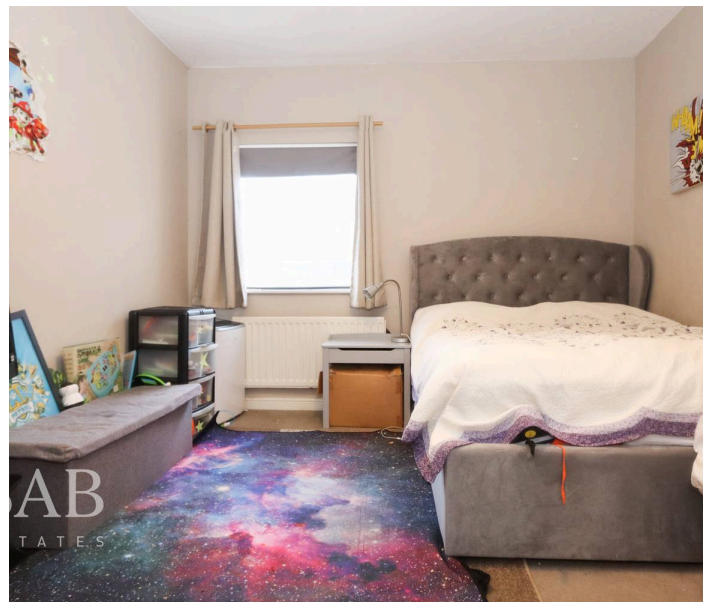
- Extended Lease on Completion
- Underground Parking Space
- Great Transport Links
- Local Amenities
- Service Charge: £183 pcm
- Ground Rent: £400 pa

Council Tax band: C

Tenure: Leasehold

EPC Energy Efficiency Rating: C

EPC Environmental Impact Rating:







SAB Estates

236-238 Ruislip Road, Greenford - UB6 9RS

020 8575 2929 • info@sabestates.com • www.sabestates.com/