



3 Well Cottages Mayfield Road, Lyminge - CT18 8HW

Guide Price £239,000

Approximate Gross Internal Area = 43 sq m / 459 sq ft

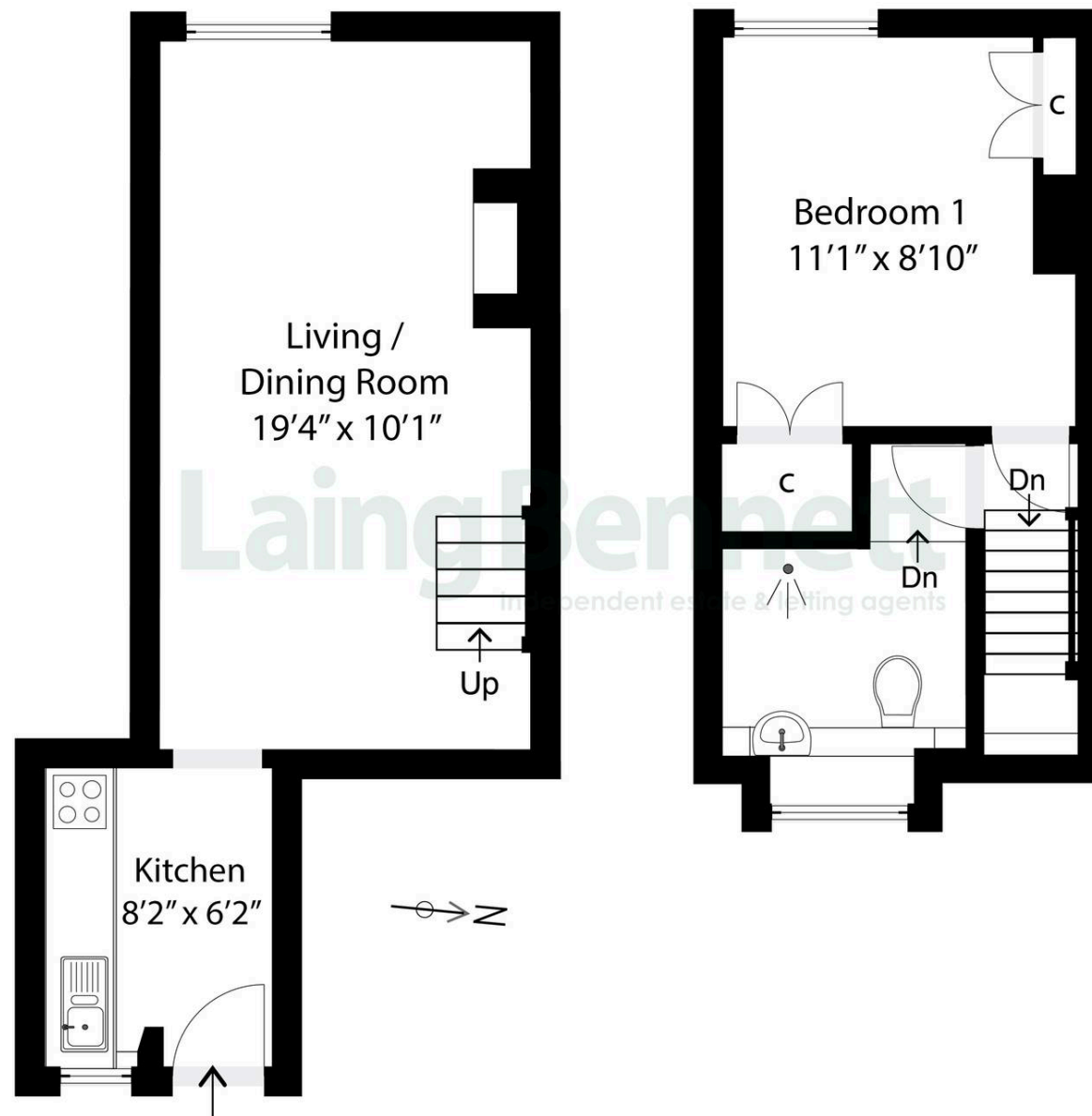


Illustration for Identification purposes only. Measurements are approximate. Dimensions given are between the widest points.

Not to scale. Outbuildings are not shown in actual location.

© Unauthorised reproduction prohibited - chriskemps@hotmail.com



3 Well Cottages Mayfield Road

Lyminge, Folkestone

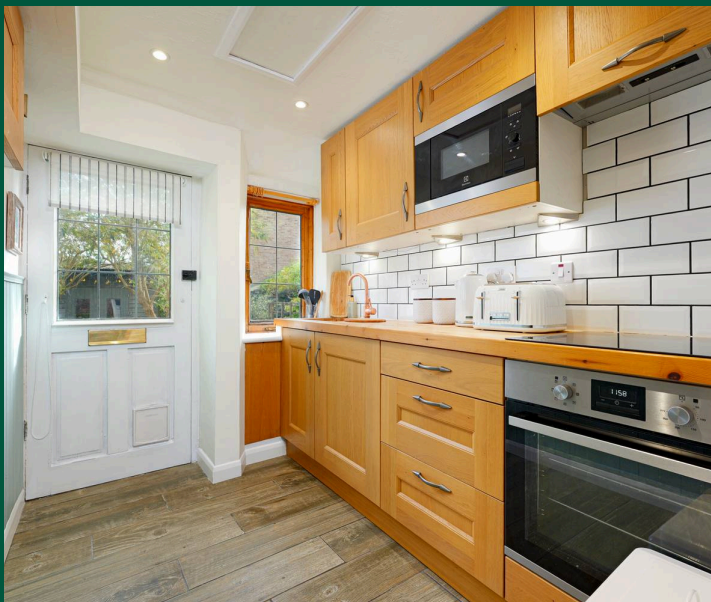
An enchanting well presented Grade II listed cottage boasting character and charm set in a central village location. The property further benefits from a pretty garden and off road parking for one car. Accommodation comprises: Ground floor – Entrance door to modern and bright kitchen with walk through opening to spacious living/dining room featuring timber floor, exposed wall and timbers. An open staircase leads to the first floor landing which leads to a lovely light modern wet room/WC and delightful bedroom with two built in wardrobe cupboards, stripped timber floor and exposed timbers. No Chain.

Council Tax band: A

Tenure: Freehold

EPC Energy Efficiency Rating: E

EPC Environmental Impact Rating:



Laing Bennett

Laing Bennett Ltd, The Estate Office, 8 Station Road – CT18 8HP

01303 863393

info@laingbennett.co.uk

www.laingbennett.co.uk/

DISCLAIMER – These details are for guidance only and do not form part of an offer or contract. Measurements are approximate. Laing Bennett Ltd and the Vendor/Landlord accept no liability. Services and appliances are untested. Applicants must make their own checks. Items shown may not be included. No staff have authority to give warranties.