



Sarah
Mains...



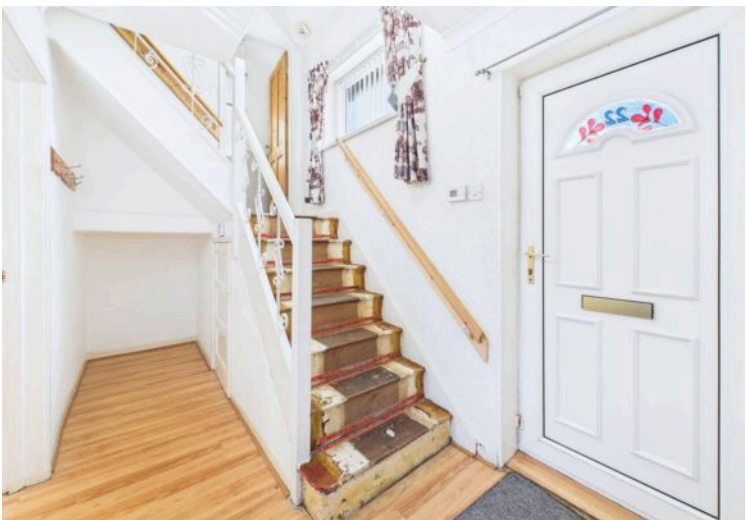
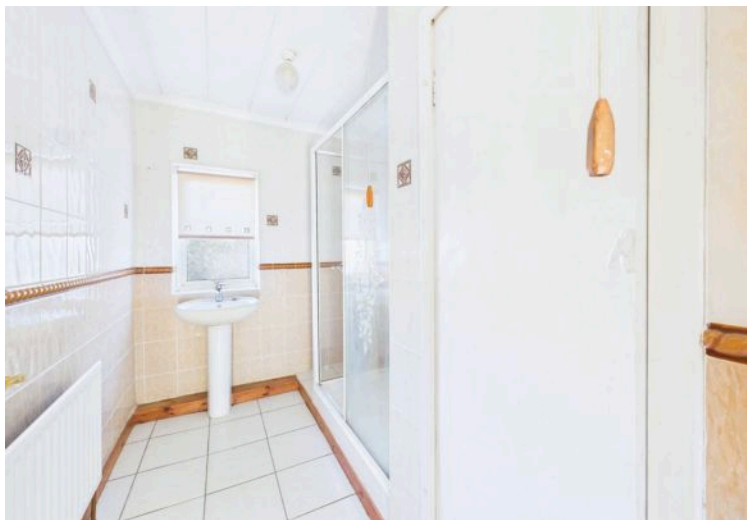
22 Beacon Lough Road, Gateshead – NE9 6YS

£125,000 Freehold

sarahmains.com









Council Tax band: A

Tenure: Freehold

EPC Energy Efficiency Rating: B

EPC Environmental Impact Rating: B

- Two Bedroom Mid Terraced House
- No Onward Chain
- Fitted Kitchen
- Shower Room
- Gardens
- Council Tax Band A
- EPC Rating D

Entrance Hall

Lounge

17' 5" x 11' 9" (5.30m x 3.58m)

Kitchen

11' 9" x 9' 1" (3.58m x 2.77m)

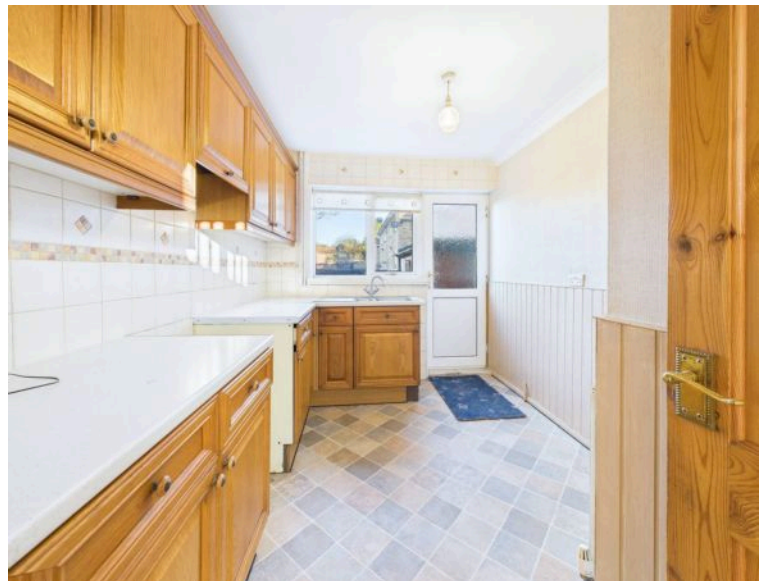
Half Landing

Separate WC

First Floor Landing

Bedroom One

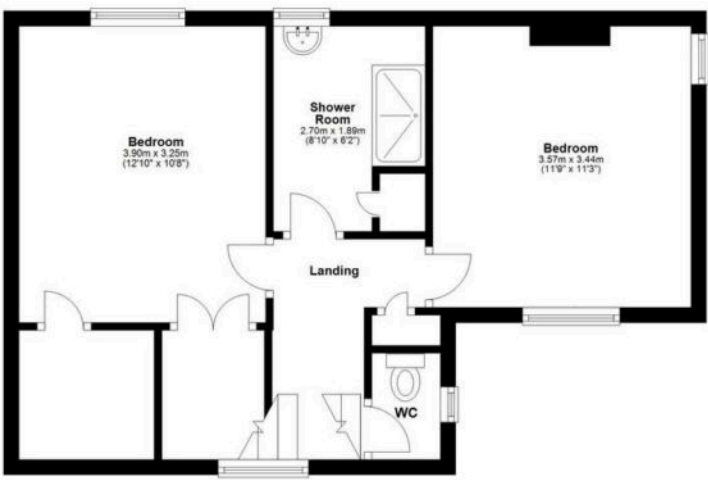
14' 9" x 8' 6" (4.50m x 2.60m)



Ground Floor



First Floor



Note : Plans are for illustration purposes only and are not to scale.
Plan produced using PlanUp.

You can include any text here. The text can be modified upon generating your brochure.



FRONT GARDEN

REAR GARDEN





You can include any text here. The text can be modified upon generating your brochure.

Newcastle

0191 240 3333
js@sarahmains.com

Low Fell

0191 487 8855
lfs@sarahmains.com

Whickham

0191 488 9999
ws@sarahmains.com

sarahmains.com