



13 Cromwell Crescent, Lambley – NG4 4PJ

Guide Price £315,000 – £325,000

DavidJames
the estate agent



13 Cromwell Crescent

Lambley, Nottingham

NO CHAIN - Guide Price £300,000 - £325,000 3 bed semi-detached home in the highly sought after village of Lambley! Open plan lounge/dining room, stunning kitchen & multi-vehicle parking and a generous garden!

Council Tax band: C

Tenure: Freehold

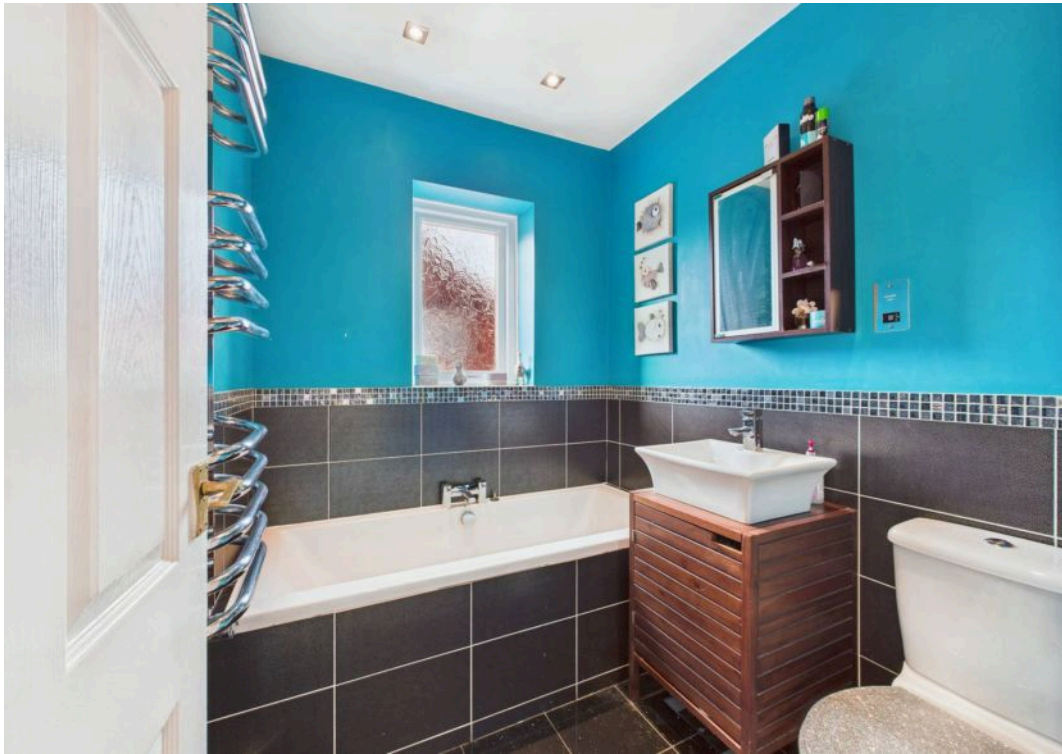
EPC Energy Efficiency Rating: C

EPC Environmental Impact Rating: D

- Beautifully-presented semi-detached family home
- Sought-after Lambley village location
- Open plan lounge/dining room with wood flooring and a wood-burning stove
- Welcoming porch and entrance hall with useful understairs storage
- Stunning contemporary kitchen with a feature central island, granite worktops and range cooker
- Convenient downstairs WC and separate utility/laundry room
- Three first floor bedrooms
- Well-appointed family four-piece family bathroom (including both a bath and separate shower cubicle)
- Generous and enclosed rear garden with lawn and patio seating space
- Multi-vehicle driveway and garage









Floor 0



Floor 1

Approximate total area⁽¹⁾

90 m²

968 ft²

Reduced headroom

0.2 m²

2 ft²

(1) Excluding balconies and terraces

Reduced headroom

Below 1.5 m/5 ft

Calculations reference the RICS IPMS 3C standard. Measurements are approximate and not to scale. This floor plan is intended for illustration only.

GIRAFFE360



David James Estate Agents

98-100 Front Street, Arnold - NG5 7EJ

0115 955 5550 • arnold@david-james.com • www.david-james.com

These particulars are produced in good faith and are set out as a general guide only. Measurements are approximate and floor plans are for illustrative purposes only. Services have not been tested. We have established professional relationships with third-party suppliers for the provision of services to Clients, details of which can be found on the property listing page on our website.