



**Halsey Drive**

**£1,300 pcm**

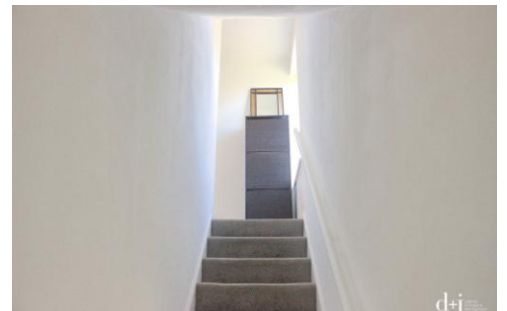
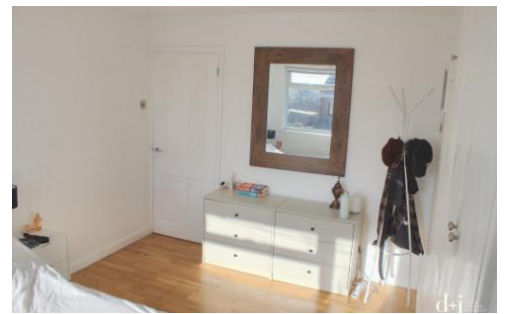


- Spacious First Floor Maisonette
- Private Rear Garden
- Gas Central Heating
- Double Glazed
- Open Plan Kitchen/ Lounge
- Modern Bathroom
- Master Bedroom with fitted Wardrobes
- Second Bedroom



tel: 01462 455434 • email: [info@djlettings.co.uk](mailto:info@djlettings.co.uk) • [www.djlettings.co.uk](http://www.djlettings.co.uk)





We're delighted to offer this lovely first-floor maisonette in Hitchin, an inviting home in a peaceful residential area with great access to Hitchin town centre, local amenities and travel links. It's the perfect blend of comfort and convenience.

Inside, you'll find a spacious open-plan kitchen and lounge, ideal for relaxing or entertaining. The master bedroom features fitted wardrobes, and there's a second bedroom for guests or a home office. A modern

**Viewings:** strictly by appointment with dj Lettings, Hitchin office \*For details of our fees please visit [www.djlettings.co.uk](http://www.djlettings.co.uk)



30 Sun Street, Hitchin  
Hertfordshire. SG5 1AH

t: 01462 455434  
[info@djlettings.co.uk](mailto:info@djlettings.co.uk)  
[www.djlettings.co.uk](http://www.djlettings.co.uk)



Free Property Appraisal • Full Management Service • Tenant Find Service • Tenant Reference Checks  
Rent & Legal Protection • Safety Regulation Advice • Tenancy Deposit Registration  
Client Money Protection • Buy to Let Advice • Estate Management Services