



Mead Avenue, Hauxton

+44 (0) 1223 508050

lettings@cookecurtis.co.uk

www.cookecurtis.co.uk

Spacious four-bedroom detached home with garage and garden. Set within a quiet residential development, this well-presented four-bedroom detached home offers generous living space, modern interiors, and a practical layout ideal for family living.

£3,100 pcm

Mead Avenue, Cambridge,
CB22 5FS



Spacious four-bedroom detached home with garage and garden. Set within a quiet residential development, this well-presented four-bedroom detached home offers generous living space, modern interiors, and a practical layout ideal for family living.

The ground floor features a bright kitchen/dining room with French doors opening to the rear garden, providing an excellent space for both everyday use and entertaining. The kitchen comes fully fitted with appliances, including a fridge/freezer and washing machine, and is complemented by a separate utility room and ground floor WC for added convenience.

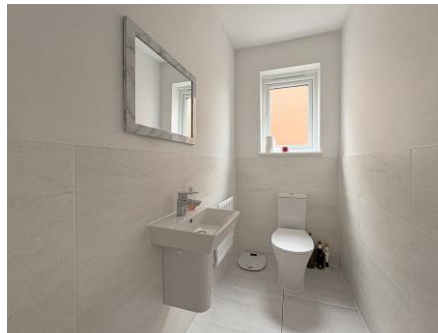
The sitting room offers a comfortable retreat, while the office/bedroom five provides flexibility for home working or guest accommodation.

Upstairs, there are four well-proportioned bedrooms, including a principal bedroom with en suite, along with a modern family bathroom.

Outside, the property benefits from an enclosed rear garden with patio area, perfect for outdoor dining, and a detached garage with driveway parking.

Available 17th January 2026 to a professional household. Pets considered.







140sqm / 1501 sqft

4 bed, 2 bath, 2 recep

EPC - B / 82

Council tax band - E

Gas central heating

Garage

Unfurnished

Available January 2026





Total area: approx. 140.4 sq. metres (1511.6 sq. feet)

Drawings are for guidance only. www.beachenergy.co.uk - IPMS 2
Plan produced using PlanUp.



Hauxton is a popular, historic South Cambridgeshire Village, located just four miles from the centre of Cambridge and within easy reach of the A10, M11 and the park and ride. The village has a range of amenities including a recreation ground with modern play equipment, sports pitches, an organic health shop, gym, ancient parish church and a well-regarded primary school that goes on to feed either Melbourn or Sawston Village Colleges, with bus services to both. There are more comprehensive facilities, as well as a station providing services into London Liverpool Street, in the neighbouring village of Great Shelford. There are good cycle routes to Cambridge, including a newly opened cycleway across to Trumpington Park and Ride and on to the Guided Busway cycle route, plus a regular bus service to Addenbrooke's and into the city centre.

COOKE
CURTIS
& CO