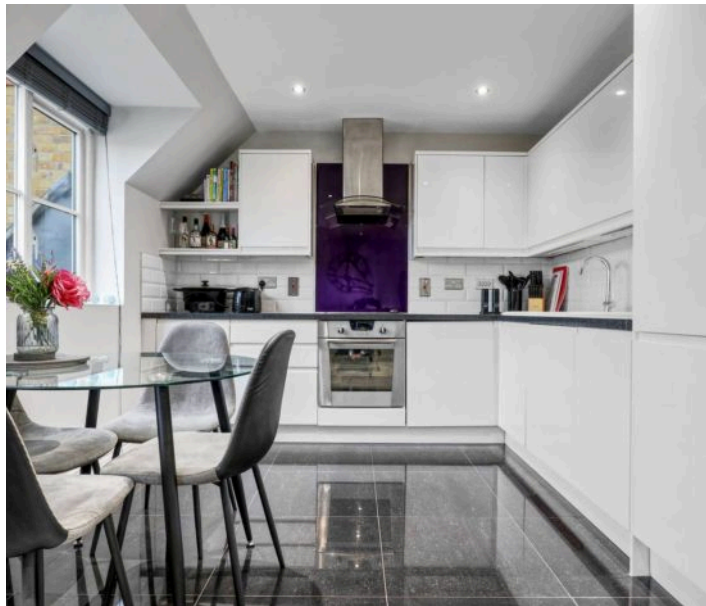




Stewart Place Station Road, Ware

£250,000 Leasehold

Integrated Kitchen Appliances • Open-Plan Living Area • Contemporary Bathroom with Walk-in Shower •
 Allocated Parking • Less than 500ft - Ware Train Station • 2 Bedrooms • Well Maintained Communal Areas •
 Complete Onward Chain



Accommodation Comprises:

Lounge

9' 11" x 14' 2" (3.01m x 4.32m)

Kitchen

9' 4" x 10' 7" (2.84m x 3.23m)

Bedroom 1

9' 10" x 11' 11" (3.00m x 3.63m)

Bedroom 2

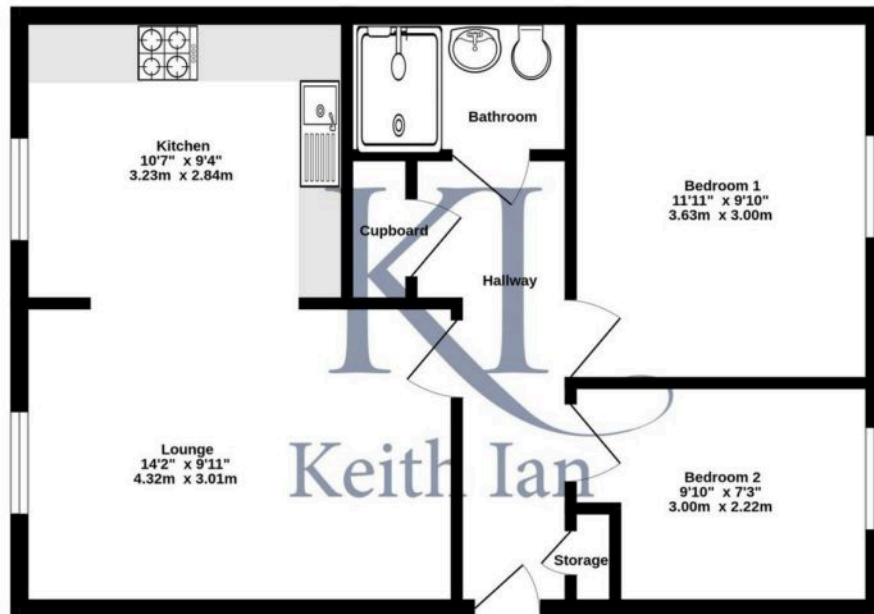
7' 3" x 9' 10" (2.22m x 3.00m)

Bathroom





Upper Floor
531 sq.ft. (49.4 sq.m.) approx.



TOTAL FLOOR AREA: 531 sq.ft (49.4 sq.m.) approx.
Whilst every attempt has been made to ensure the accuracy of the floorplan contained herein, measurements of doors, windows, rooms and any other items are approximate and no responsibility is taken for any error, omission or mis-statement. This plan is for illustrative purposes only and should be used as such by any prospective purchaser. The services, systems and appliances shown have not been tested and no guarantee as to their operability or efficiency can be given.
Made with Metreplus CS2025

Keith Ian are pleased to offer this well-presented two-bedroom apartment, offered with a complete onward chain.

The property features a spacious open-plan living area, a modern fitted kitchen including integrated appliances and space for dining. Both bedrooms are neutrally decorated and carpeted. The contemporary bathroom is fitted with a walk-in shower, large vanity unit with storage, and a heated towel rail. Externally, residents benefit from allocated parking, well-maintained communal areas, and access to a landscaped courtyard with seating.

The apartment is conveniently located less than 500ft from Ware Train Station, offering excellent transport links, and is close to local shops, amenities, and the town centre. An ideal property for professionals, couples, or small families seeking a modern, low-maintenance home. Early viewing is recommended.

Council Tax band: C

Tenure: Leasehold

EPC Energy Efficiency Rating: C

EPC Environmental Impact Rating: C