



Queens Promenade

Blackpool, FY2 9GL

- **PRESTIGIOUS SEA FRONT TOP FLOOR APARTMENT**
- **3 DOUBLE BEDROOMS, MODERN OPEN PLAN LIVING**
- **LIFT, COMMUNAL GARDENS**
- **MOVE IN COSTS £2369.23**

£1,100 pcm

EPC Rating '68'



42 Admiral Point , Queens Promenade, Bispham, Blackpool, FY2 9GL



Property Description

NEW TO THE RENTAL MARKET 3 BEDROOM TOP FLOOR APARTMENT WITH BREATHTAKING VIEWS OVER THE COASTLINE.

THIS IS A PRESTIGIOUS GRADE II LISTED BUILDING PLACED ON BLACKPOOL PROMENADE.

PROPERTY COMPRISES OF:

3 DOUBLE BEDROOMS, 2 BATHROOMS, MODERN OPEN PLAN LIVING, WITH MODERN KITCHEN OFF, LIFT, ALLOCATED PARKING.

VIEWING IS ESSENTIAL TO APPRECIATE HOW STUNNING THIS APARTMENT IS

HALL

STORAGE CUPBOARD, VELUX WINDOW, ELECTRIC STORAGE HEATER

OPEN PLAN LIVING AREA

21' 9" x 21' 4" (6.63m x 6.5m) EXPOSED CEILING BEAMS, TV POINT, SECONDARY GLAZED WINDOWS TO THE FRONT AND SIDE WITH VIEWS OVER THE IRISH SEA



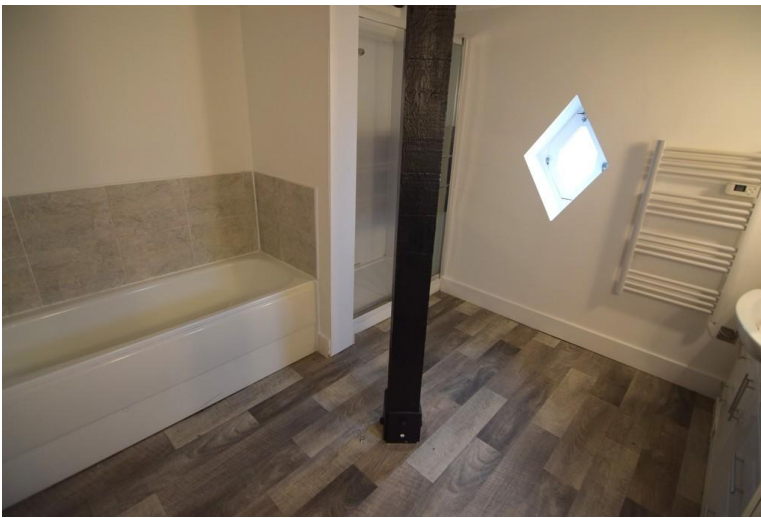
KITCHEN AREA

MODERN STYLE FITTED WALL AND BASE UNITS WITH COMPLEMENTARY WOOD WORK SURFACES AND BREAKFAST BAR.

SINK WITH MIXER TAP, BUILT IN ELECTRIC OVEN AND ELECTRIC HOB, INTEGRATED FRIDGE FREEZER AND INTEGRATED DISHWASHER.

BEDROOM 1

16' 9" x 12' 10" (5.11m x 3.91m) DOUBLE GLAZED DOORS TO BALCONY WITH VIEWS OVER NORTH SHORE GOLF COURSE, ELECTRIC HEATER



BEDROOM 2

15' 9" x 10' 6" (4.8m x 3.2m) SECONDARY GLAZED WINDOW TO THE FRONT WITH SEA VIEWS, ELECTRIC WALL HEATER

BEDROOM 3

12' 10" x 12' 2" (3.91m x 3.71m) DOUBLE GLAZED DOORS TO BALCONY WITH VIEW OVER NORTH SHORE GOLF COURSE, ELECTRIC WALL HEATER

BATHROOM 1

10' 3" x 10' 2" (3.12m x 3.1m) PANELLED BATH, STEP IN SHOWER, VANITY WASH BASIN, LOW FLUSH WC, EXPOSED CEILING BEAMS. DOUBLE GLAZED PORTHOLE WINDOWS TO THE FRONT AND SIDE. ELECTRIC WALL HEATER AND ELECTRIC TOWEL HEATER



BATHROOM 2

10' 8" x 5' 9" (3.25m x 1.75m) BATH, VANITY WASH BASIN, LOW FLUSH WC, PART TILED WALLS, ELECTRIC WALL HEATER, HEATED TOWEL RAIL

GARDENS

COMMUNAL GARDEN AREAS

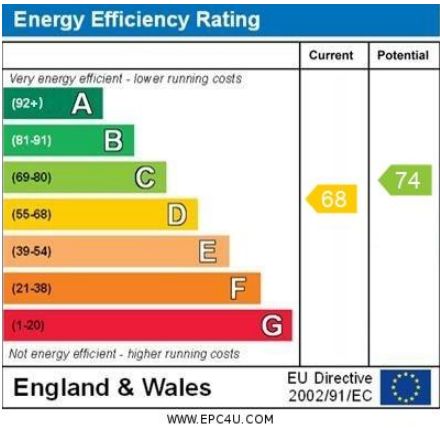
PARKING

ALLOCATED PARKING

HEATING

ELECTRIC HEATING





21 Caunce Street
Blackpool
Lancashire
FY1 3LA

www.moveholmes.co.uk
01253 928200
enquiries@moveholmes.co.uk

Agents Note: Whilst every care has been taken to prepare these sales particulars, they are for guidance purposes only. All measurements are approximate and are for general guidance purposes only and whilst every care has been taken to ensure their accuracy, they should not be relied upon and potential buyers are advised to recheck the measurements