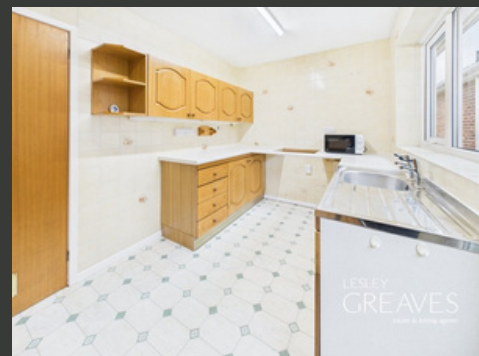




£285,000

JUMELLES DRIVE
CALVERTON

- DETACHED BUNGALOW
- TWO BEDROOMS
- LOUNGE/DINER
- VLLAGE LOCATION
- SHOWER ROOM
- DRIVEWAY
- EPC C



Detached Two Bedroom Bungalow in a Village Location

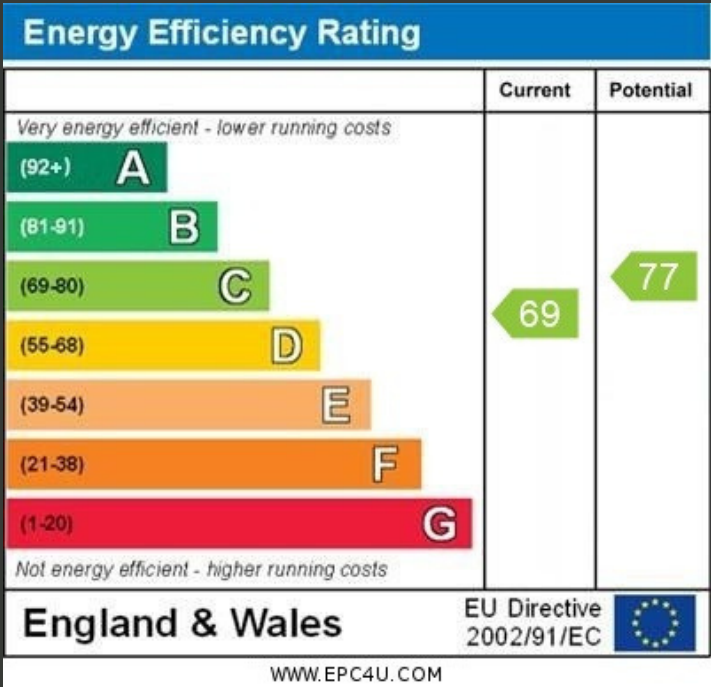
THIS TWO-BEDROOM DETACHED BUNGALOW PRESENTS A FANTASTIC OPPORTUNITY FOR THOSE SEEKING COMFORTABLE SINGLE-STOREY LIVING. BENEFITING FROM A NEW BOILER AND CONSUMER UNIT, THE PROPERTY IS SITUATED IN A POPULAR AREA OFFERING EASY ACCESS TO A RANGE OF LOCAL AMENITIES, INCLUDING SHOPS, SCHOOLS AND TRANSPORT LINKS.

THE ACCOMMODATION BEGINS WITH AN ENTRANCE PORCH LEADING INTO A GENEROUSLY SIZED LIVING ROOM, WHICH FEATURES AN ARCHED OPENING TO THE DINING AREA, CREATING A BRIGHT AND SOCIABLE LIVING SPACE. THE KITCHEN IS FITTED WITH A RANGE OF WALL AND BASE UNITS, OFFERS ACCESS TO THE SIDE OF THE PROPERTY.

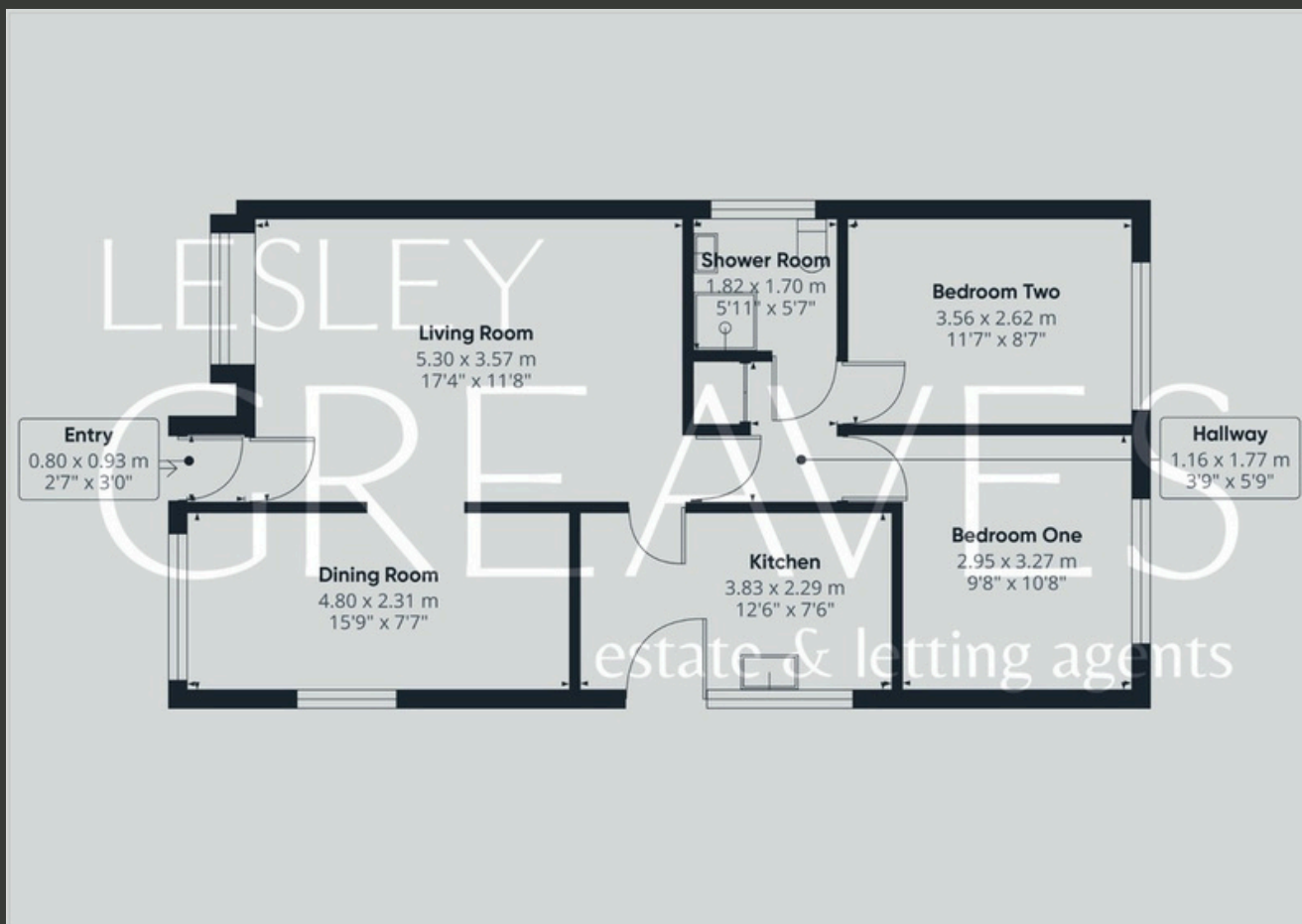
THERE ARE TWO WELL-PROPORTIONED DOUBLE BEDROOMS AND A SHOWER ROOM WITH SHOWER ENCLOSURE, WASH BASIN AND WC COMPLETING THE INTERNAL LAYOUT.

OUTSIDE, THE PROPERTY BENEFITS FROM A FRONT DRIVEWAY PROVIDING OFF-ROAD PARKING. THE ENCLOSED REAR GARDEN FEATURES A PATIO SEATING AREA, OFFERING A PRIVATE AND INVITING SPACE TO ENJOY THE OUTDOORS.

- FREEHOLD
- COUNCIL TAX; BAND C
- LOCAL AUTHORITY; GEDLING BOROUGH COUNCIL
- MEASUREMENTS; 70 SQ METERS







Agent's Note: These particulars have been prepared in good faith and are provided for guidance purposes only. While every effort has been made to ensure their accuracy, they should not be relied upon as exact. All measurements are approximate, and floor plans are for illustrative purposes only. Prospective buyers or tenants are advised to verify all details independently, conduct their own due diligence, and note that services, systems, and appliances have not been tested.

Lesley Greaves Estate & Lettings Agents

22 Main Road ,Gedling, Nottingham, NG4 3HP

0115 987 7337

sales@lesleygreaves.co.uk