



# FRAMPTON GATE

MIDDLEGATE ROAD, FRAMPTON

A COLLECTION OF 2, 3 & 4 BEDROOM HOMES



ALLISON  
HOMES



A row of modern semi-detached houses with red-tiled roofs and a large leafless tree in the foreground. The houses are built with light-colored brick and have white window frames. The tree is large and has many bare branches, suggesting it might be late autumn or winter. The sky is blue with some light clouds.

ALL ABOUT FEELING  
PART OF SOMEWHERE  
SPECIAL

---

Welcome to your new home  
at **Frampton Gate**

---





# ENJOY AN EXCEPTIONAL QUALITY OF VILLAGE LIVING



Frampton Gate is set within a unique Lincolnshire landscape that has evolved naturally and organically over centuries. The second phase offers a choice of two, three and four bedroom homes in a desirable village location at Frampton, and close to the neighbouring villages of Kirton and Wyberton. Each home has been built and finished with Allison Homes' signature craftsmanship and interior specification, with each design carefully tailored for relaxed modern living.

The homes are set within a landscaped streetscape, with green spaces and play areas adding to the tranquil feel. As well as this Frampton Gate is just a ten-minute drive from the thriving market town of Boston, and together with the excellent road connections that offer a wealth of choices for commuters, Frampton Gate is the ideal choice whether you are starting out or looking to discover quality of life for a growing family.

Frampton, together with Kirton and Wyberton, offer a range of amenities; you will find convenience stores Costcutter

and International Food and Drink, together with a Cooperative branch, pharmacy, and medical practice in Kirton. Families will find early years education at Frampton Pre-School, rated 'Good' by Ofsted just an eight-minute walk away, while Kirton Primary School, also rated Good, is one of Lincolnshire's top ten best state schools. Senior level Thomas Middlecott Academy is a mile away, with a selective Grammar School and Sixth Form in Boston.

For leisure, Kirton Youth Club is a hub for activities from football, netball, and basketball to arts and crafts, cooking and karaoke. All ages can enjoy Kirton's Middlecott Sport and Fitness Centre with gym, spin-studio and fitness classes, while Boston's Geoff Moulder Leisure Complex offers everything from a baby pool to family fun on the leisure pool flume. The Graves Park Social Club and Wyberton's Sports and Social Club offer a friendly welcome and calendar of social evenings. Dining out you'll find family – and dog-friendly – local inns, restaurants in characterful old cottages, and places for a takeaway.



“

Frampton is part of a beautifully connected tapestry of local villages that together create a close-knit and well-served community.

”

On Wednesday's and Saturday's you can take a stroll through Boston's markets which have been held for hundreds of years and is the largest in Lincolnshire. Discover the medieval streetscapes which reveal eateries, coffee spots and shopping. Stay for the evening and enjoy the Savoy's offering of premium arts entertainment from films to live-screened ballet, opera, and theatre.

The City of Lincoln offers the beautiful Cathedral and Cornhill Quarters, extensive High Street and Waterside Shopping Centre, while the Theatre Royal stages everything from one-man shows to big-scale productions. When it comes to the outdoors, The Wash is an internationally special place for wildlife. Head to RSPB Frampton Marsh, a waterscape of freshwater habitats to unwind watching summer skylarks, March hares and wintering flocks of birds on the tidal creeks, or to Freiston Shore RSPB Reserve where birds gather on the salt water lagoon at high-tide.



# ALL ABOUT THE QUALITY

---

**Synonymous with the quality of design and craftsmanship associated with all Allison Homes developments, all the houses at Frampton Gate benefit from a high standard specification.**

This includes contemporary kitchens with stainless steel splashbacks, integrated appliances (on selected homes), a ceramic or induction hob and chimney-style extractors.

In all homes the bathrooms and en suites feature white Roca sanitaryware. To help reduce energy bills, all homes feature thermostatic radiator valves to all habitable rooms. Low energy LED down lights to the kitchen, bathroom and en suite also come as standard.

“ We know we are not just building houses, we are creating the most important spaces in people's lives that our customers will love to live in now and throughout the years ahead. ”







“

Each home at Frampton Gate has been designed to maximise light and space.

”

## ALL ABOUT HOMES BUILT ON SOLID VALUES

---

**We are passionate about beautiful design that fits with evolving lifestyles, creating homes that are modern, sustainable and affordable.**

Our love of quality and great craftsmanship underpins everything we do, because homes are such an important and integral part of all of our lives.

That's why we ensure every Allison home is something exceptional.





# ALL ABOUT THE SPECIFICATION

2 BEDROOM BUNGALOW  
3 BEDROOM BUNGALOW  
2 BEDROOM HOUSE  
3 BEDROOM HOUSE  
4 BEDROOM HOUSE

2 BEDROOM BUNGALOW  
3 BEDROOM BUNGALOW  
2 BEDROOM HOUSE  
3 BEDROOM HOUSE  
4 BEDROOM HOUSE

## INTERNAL FIXTURES AND FITTINGS

### GENERAL

Traditional construction on Piled Raft	•	•	•	•	•
NHBC 10 year warranty	•	•	•	•	•
Single colour (white) matt emulsion wall and floor colour throughout	•	•	•	•	•
Smooth ceilings throughout	•	•	•	•	•
Internal joinery painted satin white	•	•	•	•	•
Ironmongery	•	•	•	•	•
Wardrobes to Bedroom 1 (where applicable)	•	•	•	•	•
Smooth white 5 vertical bar internal doors	•	•	•	•	•

### KITCHEN & UTILITY (Where applicable)

Choice of Kitchen unit door fronts from selected range*	•	•	•	•	•
Choice of laminate worktops with matching upstands from selected range*	•	•	•	•	•
Soft close hinges to all cupboard doors	•	•	•	•	•
Stainless steel splashback	•	•	•	•	•
Single bowl sink with mixer tap	•	•	•	•	•
1.5 bowl sink with mixer tap					•
Integrated stainless steel finish single oven	•	•	•	•	•
Integrated stainless steel finish eye level double oven					•
Integrated ceramic hob	•	•	•	•	•
Integrated induction hob					•
Stainless steel chimney hood	•	•	•	•	•
Integrated dishwasher (detached properties only)		•		•	•
Plumbing and removable unit for future installation of dishwasher	•	•	•	•	•
Space and plumbing for washing machine	•	•	•	•	•
Tumble dryer space where applicable					•

### CLOAKROOM

White sanitaryware	•	•	•	•	•
Tiled splashback to basin - choice from standard range	•	•	•	•	•

### BATHROOM (Where applicable)

White sanitaryware	•	•	•	•	•
Contemporary mixer taps	•	•	•	•	•
Bath filler mixer	•	•	•	•	•
Bath filler and shower mixer (no En Suite)	•	•	•	•	•
White heated towel rail (where applicable)	•	•	•	•	•
Half height tiling behind bath - choice from standard range					•
Full height tiling and screen to shower area (no En Suite)	•		•		•

### EN SUITE (Where applicable)

White sanitaryware					•
Contemporary mixer taps					•
White heated towel rail (where applicable)					•
Shower enclosure with rainfall head and screen to En Suite (where applicable)					•
Half height tiling behind basin and WC - choice from standard range					•
Full height tiling to shower area					•



2 BEDROOM BUNGALOW  
3 BEDROOM BUNGALOW  
2 BEDROOM HOUSE  
3 BEDROOM HOUSE  
4 BEDROOM HOUSE

2 BEDROOM BUNGALOW  
2 BEDROOM HOUSE  
3 BEDROOM BUNGALOW  
3 BEDROOM HOUSE  
4 BEDROOM HOUSE

## INTERNAL FIXTURES AND FITTINGS

### HEATING & INSULATION

Wall mounted combination boiler	•	•	•	•	•
Wall mounted system boiler					•
Prefinished Radiators	•	•	•	•	•
Thermostatic radiator valves to most radiators	•	•	•	•	•
Smart meters as standard	•	•	•	•	•
400mm mineral wool insulation to roof space	•	•	•	•	•

### ELECTRICAL INSTALLATION

White LED downlighters to Kitchen	•	•	•	•	•
White LED downlighters to Bathroom and En Suite (where applicable)	•	•	•	•	•
Low energy lighting	•	•	•	•	•
All sockets to be white fittings	•	•	•	•	•
Telephone points to Living Room, Hallway/Cupboard and Bedroom 1	•	•	•	•	•
TV points to Living Room (media plate), Family Room and Bedroom 1	•	•	•	•	•
Mains wired smoke detectors fitted to Building Regulation standards	•	•	•	•	•
Mains wired carbon monoxide detector fitted to Building Regulation standards	•	•	•	•	•
Fibre internet for high speed connectivity	•	•	•	•	•

### FLOOR FINISHES

Range of carpets and flooring available as upgrade option*	•	•	•	•	•
--	---	---	---	---	---

## EXTERNAL FIXTURES AND FITTINGS

### GENERAL

House type bricks and roof tiles as per external plot schedule/charter plan	•	•	•	•	•
Double glazed uPVC windows throughout, white handles	•	•	•	•	•
Footpaths and driveways as per charter plan	•	•	•	•	•

### EXTERNAL DOORS

GRP external doors with chrome lever furniture	•	•	•	•	•
Chrome contemporary lever on rose door furniture	•	•	•	•	•
Chrome effect door bell	•	•	•	•	•

### GARDENS

Front garden turfing and planting to approved landscape scheme	•	•	•	•	•
Paths, patios and fencing to approved layout	•	•	•	•	•
External tap	•	•	•	•	•
Turfing to rear garden upgrade option available	•	•	•	•	•

### EXTERNAL LIGHTING & ELECTRICS

Front exterior PIR light fitting provided	•	•	•	•	•
Rear exterior PIR light fitting provided	•	•	•	•	•
Power and lighting to garage where within curtilage (where applicable)	•	•	•	•	•

### 2 BEDROOM BUNGALOW

The Lilac, The Magnolia, The Juneberry, The Laburnum

### 2 BEDROOM HOUSES

The Hawthorn, The Plum

### 3 BEDROOM BUNGALOW

The Jasmine

### 3 BEDROOM HOUSES

The Apple, The Apple Blossom, The Crab Apple, The Dogwood, The Hemlock, The Holly, The Holly Special, The Laurel, The Osier, The White Beam

### 4 BEDROOM HOMES

The Aspen, The Hornbeam, The Mulberry, The Rowan, The Sycamore, The Walnut Special, The Willow

\*Subject to build stage. These particulars shall not form any contract and Allison Homes reserve the right to alter specification and/or design without notice. Purchasers are advised to check with our Sales Executives on the plot of their choice.



# SITEPLAN

 THE LILAC 2 bedroom home Homes 12, 13, 14 & 151	 THE HOLLY 3 bedroom home Homes 1, 7, 89, 101, 179 & 184
 THE JUNE BERRY 2 bedroom home Home 16	 THE APPLE 3 bedroom home Homes 178, 185, 186 & 187
 THE HAWTHORN 2 bedroom home Homes 82, 83, 202, 203, 204, 205 & 206	 THE CRAB APPLE 3 bedroom home Homes 4, 5 & 6
 THE PLUM 2 bedroom home Homes 93, 94 & 95	 THE ROWAN 4 bedroom home Homes 64, 77 & 78
 THE APPLE BLOSSOM 3 bedroom home Homes 66, 67, 68, 75, 80, 81, 200, 201 & 208	 THE HORNBEAM 4 bedroom home Homes 8, 9, 10, 62, 63, 70, 86 & 87
 THE HOLLY SPECIAL 3 bedroom home Homes 46, 49, 61, 65, 69, 74, 79, 84, 88 & 207	 THE SYCAMORE 4 bedroom home Homes 96 & 173
 THE LAUREL 3 bedroom home Homes 11, 71, 76 & 85	 THE WALNUT SPECIAL 4 bedroom home Homes 91, 99, 100 & 172
 THE WHITE BEAM 3 bedroom home Homes 57, 58, 59, 60, 72 & 73	 THE MULBERRY 4 bedroom home Homes 190 & 191
 THE OSIER 3 bedroom home Homes 176, 177, 188 & 189	 THE ASPEN 4 bedroom home Homes 90, 97, 98 & 171
 THE HEMLOCK 3 bedroom home Homes 2, 3, 174, 175, 193 & 194	 THE WILLOW 4 bedroom home Homes 170 & 195
	 THE OAK 5 bedroom home Home 192

## FRAMPTON GATE

BOSTON



Every care has been taken to ensure the accuracy of these particulars, but the contents shall not form part of any contract and the vendors reserve the right to alter specification and/or delay without notice. The site plan is drawn to show the relative position of individual properties. NOT TO SCALE. This is a two dimensional drawing and will not show land contours and gradients, boundary treatments or local authority street lighting. Landscaping shown is for illustration purposes only and is subject to change. Footpaths subject to change. Purchasers are advised to check with our Sales Executives on the home of their choice. The site details and individual house types are subject to planning variation.



# OUR HOMES

## THE LILAC

2 bedroom home  
Homes 12, 13, 14 & 15



## THE JUNE BERRY

2 bedroom home  
Home 16



## THE HAWTHORN

2 bedroom home  
Homes 82, 83, 202, 203,  
204, 205 & 206



## THE PLUM

2 bedroom home  
Homes 93, 94 & 95



## THE APPLE BLOSSOM

3 bedroom home  
Homes 66, 67, 68, 75, 80,  
81, 200, 201 & 208



## THE HOLLY SPECIAL

3 bedroom home  
Homes 46, 49, 61, 65, 69,  
74, 79, 84, 88 & 207



## THE LAUREL

3 bedroom home  
Homes 11, 71, 76 & 85



## THE WHITE BEAM

3 bedroom home  
Homes 57, 58, 59, 60, 72 & 73



## THE OSIER

3 bedroom home  
Homes 176, 177, 188 & 189



## THE HEMLOCK

3 bedroom home  
Homes 2, 3, 174, 175, 193 & 194



## THE HOLLY

3 bedroom home  
Homes 1, 7, 89, 101, 179 & 184



## THE APPLE

3 bedroom home  
Homes 178, 185, 186 & 187



## THE CRAB APPLE

3 bedroom home  
Homes 4, 5 & 6



## THE ROWAN

4 bedroom home  
Homes 64, 77 & 78



## THE HORNBEAM

4 bedroom home  
Homes 8, 9, 10, 62, 63, 70, 86 & 87



FRAMPTON GATE

BOSTON



ALLISON  
HOMES



# OUR HOMES

## THE SYCAMORE

4 bedroom home  
Homes 96 & 173



## THE WALNUT SPECIAL

4 bedroom home  
Homes 91, 99, 100 & 172



## THE MULBERRY

4 bedroom home  
Homes 190 & 191



## THE ASPEN

4 bedroom home  
Homes 90, 97, 98 & 171



## THE WILLOW

4 bedroom home  
Homes 170 & 195



## THE OAK

5 bedroom home  
Home 192



## FRAMPTON GATE

BOSTON

---



ALLISON  
HOMES



# THE LILAC

2 bedroom home  
Homes 12, 13, 14 & 15



FRAMPTON GATE  
FRAMPTON

  
ALLISON  
HOMES



# THE LILAC

2 bedroom home  
Homes 12, 13, 14 & 15

## GROUND FLOOR

Living Area	3.09m x 2.71m	10'2" x 8'11"
Kitchen/Dining	3.09m x 3.13m	10'2" x 10'3"
Utility	1.69m x 1.91m	5'7" x 6'3"
Bedroom 1	2.91m x 4.06m	9'7" x 13'4"
Bedroom 2	2.63m x 3.30m	8'8" x 10'10"
Bathroom	1.96m x 2.34m	6'5" x 7'8"



GROUND FLOOR

## FRAMPTON GATE

FRAMPTON

All images used are for illustrative purpose only. Dimensions given are illustrative for this house type and individual properties may differ. Please check with your Sales Executives in respect of individual properties. We give maximum dimensions within each room and these may include areas of fixtures and fittings including fitted furniture. These dimensions should not be used for carpet or flooring sizes, appliance spaces or items of furniture. All images, photographs and dimensions are not intended to be relied upon for, nor to form part of any contract unless specifically incorporated in writing into the contract.



# THE JUNE BERRY

2 bedroom home  
Home 16



FRAMPTON GATE

FRAMPTON

  
ALLISON  
HOMES



# THE JUNE BERRY

2 bedroom home  
Home 16

## GROUND FLOOR

Living Room	4.28m x 3.17m	14'1" x 10'5"
Kitchen/Dining	3.59m x 4.28m	11'9" x 14'1"
Bedroom 1	2.98m x 3.49m	9'9" x 11'5"
Bedroom 2	3.09m x 2.73m	10'2" x 8'11"
Bathroom	2.45m x 2.03m	8'0" x 6'8"



GROUND FLOOR

## FRAMPTON GATE

FRAMPTON

All images used are for illustrative purpose only. Dimensions given are illustrative for this house type and individual properties may differ. Please check with your Sales Executives in respect of individual properties. We give maximum dimensions within each room and these may include areas of fixtures and fittings including fitted furniture. These dimensions should not be used for carpet or flooring sizes, appliance spaces or items of furniture. All images, photographs and dimensions are not intended to be relied upon for, nor to form part of any contract unless specifically incorporated in writing into the contract.



# THE HAWTHORN

2 bedroom home  
Homes 82, 83, 202,  
203, 204, 205 & 206



FRAMPTON GATE  
FRAMPTON

  
ALLISON  
HOMES



# THE HAWTHORN

2 bedroom home  
Homes 82, 83, 202,  
203, 204, 205 & 206

## GROUND FLOOR

Living Room	3.54m x 4.03m	11'7" x 13'3"
Kitchen/Dining	4.55m x 3.00m	14'11" x 9'10"
WC	0.91m x 1.99m	2'12" x 6'6"

## FIRST FLOOR

Bedroom 1	3.54m x 3.25m	11'7" x 10'8"
Bedroom 2	2.54m x 3.77m	8'4" x 12'4"
Bathroom	1.93m x 2.12m	6'4" x 6'11"



GROUND FLOOR



FIRST FLOOR

## FRAMPTON GATE

FRAMPTON

All images used are for illustrative purpose only. Dimensions given are illustrative for this house type and individual properties may differ. Please check with your Sales Executives in respect of individual properties. We give maximum dimensions within each room and these may include areas of fixtures and fittings including fitted furniture. These dimensions should not be used for carpet or flooring sizes, appliance spaces or items of furniture. All images, photographs and dimensions are not intended to be relied upon for, nor to form part of any contract unless specifically incorporated in writing into the contract.



# THE APPLE BLOSSOM

---

3 bedroom home  
Homes 66, 67, 68, 75,  
80, 81, 200, 201 & 208



FRAMPTON GATE  
FRAMPTON

  
ALLISON  
HOMES

# THE APPLE BLOSSOM

3 bedroom home  
Homes 66, 67, 68, 75,  
80, 81, 200, 201 & 208

## GROUND FLOOR

Living/Dining	4.57m x 3.58m	14'12" x 11'9"
Kitchen	2.53m x 3.15m	8'4" x 10'4"
WC	2.53m x 1.06m	8'4" x 3'6"

## FIRST FLOOR

Bedroom 1	3.57m x 2.56m	11'9" x 8'5"
Bedroom 2	2.47m x 3.08m	8'1" x 10'1"
Bedroom 3	2.01m x 2.86m	6'7" x 9'5"
Bathroom	2.48m x 2.16m	8'2" x 7'1"

## FRAMPTON GATE

FRAMPTON



GROUND FLOOR



FIRST FLOOR

All images used are for illustrative purpose only. Dimensions given are illustrative for this house type and individual properties may differ. Please check with your Sales Executives in respect of individual properties. We give maximum dimensions within each room and these may include areas of fixtures and fittings including fitted furniture. These dimensions should not be used for carpet or flooring sizes, appliance spaces or items of furniture. All images, photographs and dimensions are not intended to be relied upon for, nor to form part of any contract unless specifically incorporated in writing into the contract.



# THE HOLLY SPECIAL

3 bedroom home  
Homes 46, 49, 61, 65, 69,  
74, 79, 84, 88 & 207



FRAMPTON GATE  
FRAMPTON

  
ALLISON  
HOMES



# THE HOLLY SPECIAL

3 bedroom home  
Homes 46, 49, 61, 65, 69,  
74, 79, 84, 88 & 207

## GROUND FLOOR

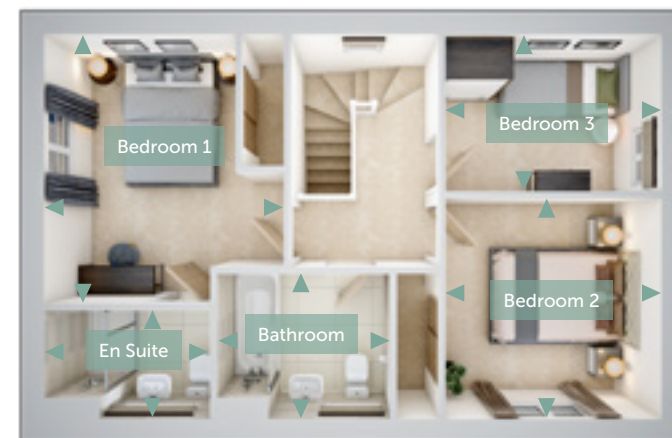
Living Room	2.91m x 5.26m	9'7" x 17'3"
Kitchen/Dining	3.22m x 5.26m	10'7" x 17'3"
WC	1.05m x 2.19m	3'5" x 7'2"

## FIRST FLOOR

Bedroom 1	3.27m x 3.68m	10'9" x 12'1"
En-Suite	2.27m x 1.49m	7'5" x 4'11"
Bedroom 2	2.94m x 3.02m	9'8" x 9'11"
Bedroom 3	2.94m x 2.15m	9'8" x 7'1"
Bathroom	2.37m x 1.99m	7'9" x 6'6"



GROUND FLOOR



FIRST FLOOR

## FRAMPTON GATE

FRAMPTON

All images used are for illustrative purpose only. Dimensions given are illustrative for this house type and individual properties may differ. Please check with your Sales Executives in respect of individual properties. We give maximum dimensions within each room and these may include areas of fixtures and fittings including fitted furniture. These dimensions should not be used for carpet or flooring sizes, appliance spaces or items of furniture. All images, photographs and dimensions are not intended to be relied upon for, nor to form part of any contract unless specifically incorporated in writing into the contract.



# THE LAUREL

3 bedroom home  
Homes 11, 71, 76 & 85

FRAMPTON GATE  
FRAMPTON



ALLISON  
HOMES



# THE LAUREL

3 bedroom home  
Homes 11, 71, 76 & 85

## GROUND FLOOR

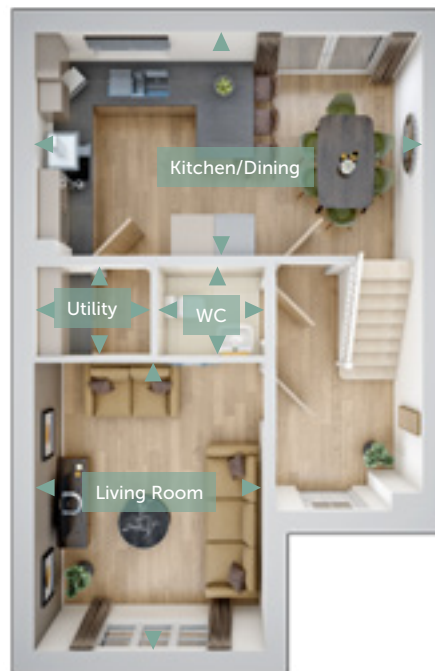
Living Room	3.30m x 4.11m	10'10" x 13'6"
Kitchen/Dining	5.54m x 3.20m	18'2" x 10'6"
Utility	1.65m x 1.29m	5'5" x 4'3"
WC	1.55m x 1.29m	5'1" x 4'3"

## FIRST FLOOR

Bedroom 1	3.30m x 3.55m	10'10" x 11'8"
En-Suite	2.15m x 1.55m	7'1" x 5'1"
Bedroom 2	2.75m x 3.03m	9'0" x 9'11"
Bedroom 3	2.70m x 2.01m	8'10" x 6'7"
Bathroom	2.24m x 2.14m	7'4" x 7'0"

## FRAMPTON GATE

FRAMPTON



GROUND FLOOR



FIRST FLOOR

All images used are for illustrative purpose only. Dimensions given are illustrative for this house type and individual properties may differ. Please check with your Sales Executives in respect of individual properties. We give maximum dimensions within each room and these may include areas of fixtures and fittings including fitted furniture. These dimensions should not be used for carpet or flooring sizes, appliance spaces or items of furniture. All images, photographs and dimensions are not intended to be relied upon for, nor to form part of any contract unless specifically incorporated in writing into the contract.



# THE WHITE BEAM

3 bedroom home  
Homes 57, 58, 59,  
60, 72 & 73



FRAMPTON GATE  
FRAMPTON

  
ALLISON  
HOMES



# THE WHITE BEAM

3 bedroom home  
Homes 57, 58, 59,  
60, 72 & 73

## GROUND FLOOR

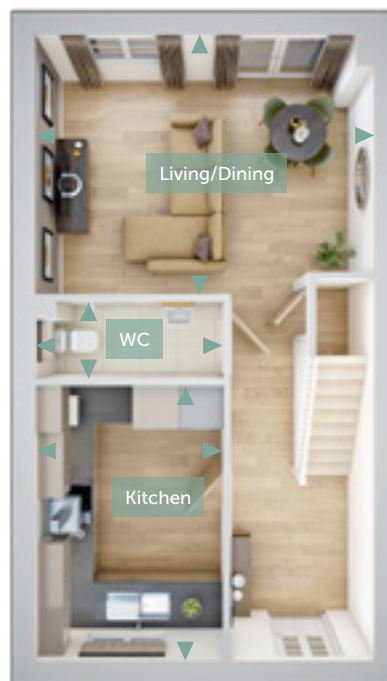
Living/Dining	4.62m x 3.56m	15'2" x 11'8"
Kitchen	2.57m x 3.75m	8'5" x 12'4"
WC	2.57m x 1.06m	8'5" x 3'6"

## FIRST FLOOR

Bedroom 1	3.06m x 2.88m	10'0" x 9'5"
En-Suite	1.46m x 2.28m	4'9" x 7'6"
Bedroom 2	2.51m x 3.31m	8'3" x 10'10"
Bedroom 3	1.99m x 2.24m	6'6" x 7'4"
Bathroom	2.51m x 2.20m	8'3" x 7'3"

## FRAMPTON GATE

FRAMPTON



GROUND FLOOR



FIRST FLOOR

All images used are for illustrative purpose only. Dimensions given are illustrative for this house type and individual properties may differ. Please check with your Sales Executives in respect of individual properties. We give maximum dimensions within each room and these may include areas of fixtures and fittings including fitted furniture. These dimensions should not be used for carpet or flooring sizes, appliance spaces or items of furniture. All images, photographs and dimensions are not intended to be relied upon for, nor to form part of any contract unless specifically incorporated in writing into the contract.



# THE ROWAN

4 bedroom home  
Homes 64, 77 & 78

FRAMPTON GATE  
FRAMPTON

  
ALLISON  
HOMES



# THE ROWAN

4 bedroom home  
Homes 64, 77 & 78

## GROUND FLOOR

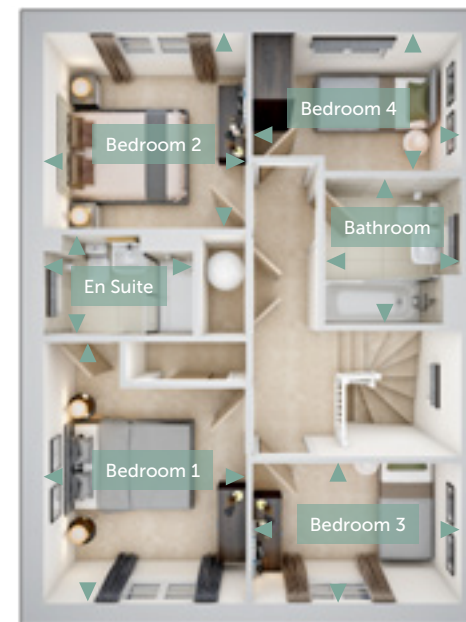
Living Room	3.16m x 4.93m	10'4" x 16'2"
Kitchen/Dining	5.96m x 4.03m	19'7" x 13'3"
WC	1.06m x 2.00m	3'6" x 6'7"

## FIRST FLOOR

Bedroom 1	2.89m x 3.07m	9'6" x 10'1"
En-Suite	2.14m x 1.44m	7'0" x 4'9"
Bedroom 2	2.89m x 2.79m	9'6" x 9'2"
Bedroom 3	2.98m x 1.97m	9'9" x 6'6"
Bedroom 4	2.98m x 2.00m	9'9" x 6'7"
Bathroom	1.95m x 2.10m	6'5" x 6'11"



GROUND FLOOR



FIRST FLOOR

## FRAMPTON GATE

FRAMPTON

All images used are for illustrative purpose only. Dimensions given are illustrative for this house type and individual properties may differ. Please check with your Sales Executives in respect of individual properties. We give maximum dimensions within each room and these may include areas of fixtures and fittings including fitted furniture. These dimensions should not be used for carpet or flooring sizes, appliance spaces or items of furniture. All images, photographs and dimensions are not intended to be relied upon for, nor to form part of any contract unless specifically incorporated in writing into the contract.



# THE HORNBEAM

4 bedroom home

Homes 8, 9, 10, 62, 63, 70, 86 & 87

FRAMPTON GATE

FRAMPTON

  
ALLISON  
HOMES



# THE HORNBEAM

4 bedroom home

Homes 8, 9, 10, 62, 63, 70, 86 & 87

## GROUND FLOOR

Living/Dining	5.63m x 3.89m	18'6" x 12'9"
Kitchen	3.35m x 4.31m	10'12" x 14'2"
Utility	2.25m x 1.84m	7'5" x 6'0"
WC	1.00m x 1.84m	3'3" x 6'0"

## FIRST FLOOR

Bedroom 1	3.35m x 3.61m	10'12" x 11'10"
En Suite	2.30m x 1.50m	7'7" x 4'11"
Bedroom 2	3.34m x 2.85m	10'11" x 9'4"
Bedroom 3	2.19m x 2.85m	7'2" x 9'4"
Bedroom 4	2.19m x 2.83m	7'2" x 9'3"
Bathroom	2.31m x 2.00m	7'7" x 6'7"



GROUND FLOOR



FIRST FLOOR

# FRAMPTON GATE

FRAMPTON

All images used are for illustrative purpose only. Dimensions given are illustrative for this house type and individual properties may differ. Please check with your Sales Executives in respect of individual properties. We give maximum dimensions within each room and these may include areas of fixtures and fittings including fitted furniture. These dimensions should not be used for carpet or flooring sizes, appliance spaces or items of furniture. All images, photographs and dimensions are not intended to be relied upon for, nor to form part of any contract unless specifically incorporated in writing into the contract.



# THE LAUREL

3 bedroom home  
Homes 11, 42, 43, 44,  
45, 48, 71, 76 & 85



FRAMPTON GATE

FRAMPTON



ALLISON  
HOMES



# THE LAUREL

3 bedroom home  
Homes 11, 42, 43, 44,  
45, 48, 71, 76 & 85

## GROUND FLOOR

Living Room	3.30m x 4.11m	10'10" x 13'6"
Kitchen/Dining	5.54m x 3.20m	18'2" x 10'6"
Utility	1.65m x 1.29m	5'5" x 4'3"
WC	1.55m x 1.29m	5'1" x 4'3"

## FIRST FLOOR

Bedroom 1	3.30m x 3.55m	10'10" x 11'8"
En-Suite	2.15m x 1.55m	7'1" x 5'1"
Bedroom 2	2.75m x 3.03m	9'0" x 9'11"
Bedroom 3	2.70m x 2.01m	8'10" x 6'7"
Bathroom	2.24m x 2.14m	7'4" x 7'0"

## FRAMPTON GATE

FRAMPTON



GROUND FLOOR



FIRST FLOOR

All images used are for illustrative purpose only. Dimensions given are illustrative for this house type and individual properties may differ. Please check with your Sales Executives in respect of individual properties. We give maximum dimensions within each room and these may include areas of fixtures and fittings including fitted furniture. These dimensions should not be used for carpet or flooring sizes, appliance spaces or items of furniture. All images, photographs and dimensions are not intended to be relied upon for, nor to form part of any contract unless specifically incorporated in writing into the contract.



# THE WHITE BEAM

3 bedroom home  
Homes 38, 39, 40, 41,  
57, 58, 59, 60, 72 & 73



FRAMPTON GATE  
FRAMPTON

  
ALLISON  
HOMES



# THE WHITE BEAM

3 bedroom home  
Homes 38, 39, 40, 41,  
57, 58, 59, 60, 72 & 73

## GROUND FLOOR

Living/Dining	4.62m x 3.56m	15'2" x 11'8"
Kitchen	2.57m x 3.75m	8'5" x 12'4"
WC	2.57m x 1.06m	8'5" x 3'6"

## FIRST FLOOR

Bedroom 1	3.06m x 2.88m	10'0" x 9'5"
En-Suite	1.46m x 2.28m	4'9" x 7'6"
Bedroom 2	2.51m x 3.31m	8'3" x 10'10"
Bedroom 3	1.99m x 2.24m	6'6" x 7'4"
Bathroom	2.51m x 2.20m	8'3" x 7'3"

## FRAMPTON GATE

FRAMPTON



GROUND FLOOR



FIRST FLOOR

All images used are for illustrative purpose only. Dimensions given are illustrative for this house type and individual properties may differ. Please check with your Sales Executives in respect of individual properties. We give maximum dimensions within each room and these may include areas of fixtures and fittings including fitted furniture. These dimensions should not be used for carpet or flooring sizes, appliance spaces or items of furniture. All images, photographs and dimensions are not intended to be relied upon for, nor to form part of any contract unless specifically incorporated in writing into the contract.



# THE ROWAN

4 bedroom home

Homes 53, 54, 55, 56, 64, 77 & 78



FRAMPTON GATE

FRAMPTON

  
ALLISON  
HOMES



# THE ROWAN

4 bedroom home

Homes 53, 54, 55, 56, 64, 77 & 78

## GROUND FLOOR

Living Room	3.16m x 4.93m	10'4" x 16'2"
Kitchen/Dining	5.96m x 4.03m	19'7" x 13'3"
WC	1.06m x 2.00m	3'6" x 6'7"

## FIRST FLOOR

Bedroom 1	2.89m x 3.07m	9'6" x 10'1"
En-Suite	2.14m x 1.44m	7'0" x 4'9"
Bedroom 2	2.89m x 2.79m	9'6" x 9'2"
Bedroom 3	2.98m x 1.97m	9'9" x 6'6"
Bedroom 4	2.98m x 2.00m	9'9" x 6'7"
Bathroom	1.95m x 2.10m	6'5" x 6'11"



GROUND FLOOR



FIRST FLOOR

## FRAMPTON GATE

FRAMPTON

All images used are for illustrative purpose only. Dimensions given are illustrative for this house type and individual properties may differ. Please check with your Sales Executives in respect of individual properties. We give maximum dimensions within each room and these may include areas of fixtures and fittings including fitted furniture. These dimensions should not be used for carpet or flooring sizes, appliance spaces or items of furniture. All images, photographs and dimensions are not intended to be relied upon for, nor to form part of any contract unless specifically incorporated in writing into the contract.



# THE HORNBEAM

4 bedroom home  
Homes 8, 9, 10, 47, 50, 51,  
52, 62, 63, 70, 86 & 87



FRAMPTON GATE  
FRAMPTON

  
ALLISON  
HOMES



# THE HORNBEAM

4 bedroom home  
Homes 8, 9, 10, 47, 50, 51,  
52, 62, 63, 70, 86 & 87

## GROUND FLOOR

Living/Dining	5.63m x 3.89m	18'6" x 12'9"
Kitchen	3.35m x 4.31m	10'12" x 14'2"
Utility	2.25m x 1.84m	7'5" x 6'0"
WC	1.00m x 1.84m	3'3" x 6'0"

## FIRST FLOOR

Bedroom 1	3.35m x 3.61m	10'12" x 11'10"
En Suite	2.30m x 1.50m	7'7" x 4'11"
Bedroom 2	3.34m x 2.85m	10'11" x 9'4"
Bedroom 3	2.19m x 2.85m	7'2" x 9'4"
Bedroom 4	2.19m x 2.83m	7'2" x 9'3"
Bathroom	2.31m x 2.00m	7'7" x 6'7"



GROUND FLOOR



FIRST FLOOR

## FRAMPTON GATE

FRAMPTON

All images used are for illustrative purpose only. Dimensions given are illustrative for this house type and individual properties may differ. Please check with your Sales Executives in respect of individual properties. We give maximum dimensions within each room and these may include areas of fixtures and fittings including fitted furniture. These dimensions should not be used for carpet or flooring sizes, appliance spaces or items of furniture. All images, photographs and dimensions are not intended to be relied upon for, nor to form part of any contract unless specifically incorporated in writing into the contract.



Middlegate Road, Frampton, Boston, Lincs PE20 1BZ  
01205 743187  
frampton.gate@allison-homes.com

ALLISON-HOMES.CO.UK

---



ALLISON  
HOMES