

Marshwood

Lettings & Property Management



Chilcombe House
Chilcombe, Bridport DT6 4PN

£4,000 pcm

A spacious and well-presented 8-bedroom house with landscaped gardens and far-reaching views over the surrounding countryside



Chilcombe House is a charming family home with plenty of entertaining space and accommodation. The property is spread over 3 floors with wonderful far-reaching views over the Dorset countryside. The impressive gardens were designed by the famous artist John Hubbard. To retain the standard of the gardens, a gardener is employed by the Landlord at no extra cost. Chilcombe is a small hamlet on the outskirts of Bridport with a church next to Chilcombe House. In Bridport there is a selection of independent boutiques and high street shopping. The Jurassic Coast is just 3.5 miles away.



Accommodation comprises:

- Entrance Hall with stairs to 1st floor
- 3 Reception Rooms (one with Aga)
- Kitchen and Utility Room with Pantry
- Conservatory
- Rear Hall and WC
- 4 double Bedrooms (1st floor)
- Bathroom and Ensuite Bathroom (1st floor)
- 3 double Bedrooms and single Bedroom (2nd floor)
- Bathroom and WC (2nd floor)

Rent

£4,000 per month



Deposit

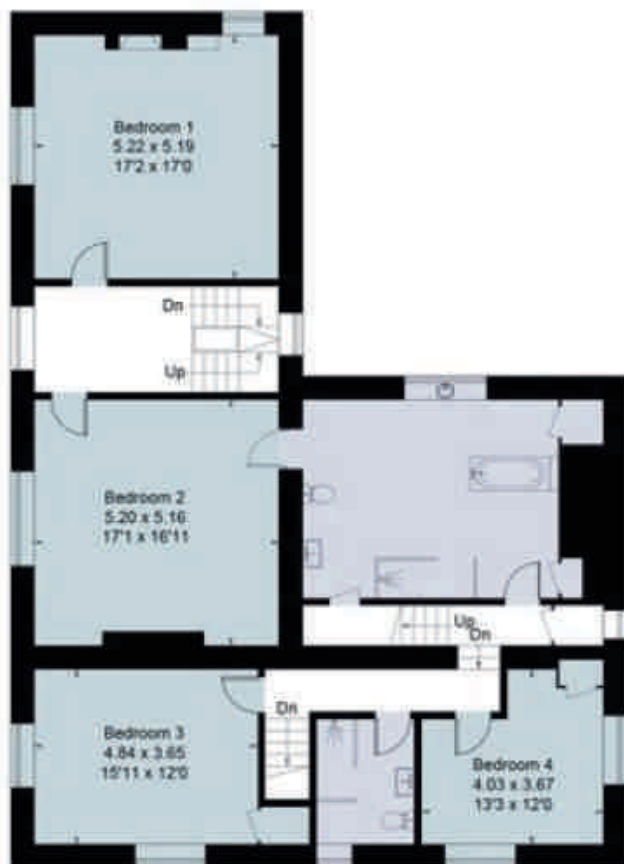
£4,615 to be held by the DPS (5 weeks' rent)

Energy Efficiency Rating		
	Current	Potential
Very energy efficient - lower running costs		
(92+)	A	
(81-91)	B	
(69-80)	C	
(55-68)	D	
(39-54)	E	
(21-38)	F	
(1-20)	G	
Not energy efficient - higher running costs		
	58	74
England, Scotland & Wales		
	EU Directive 2002/91/EC	

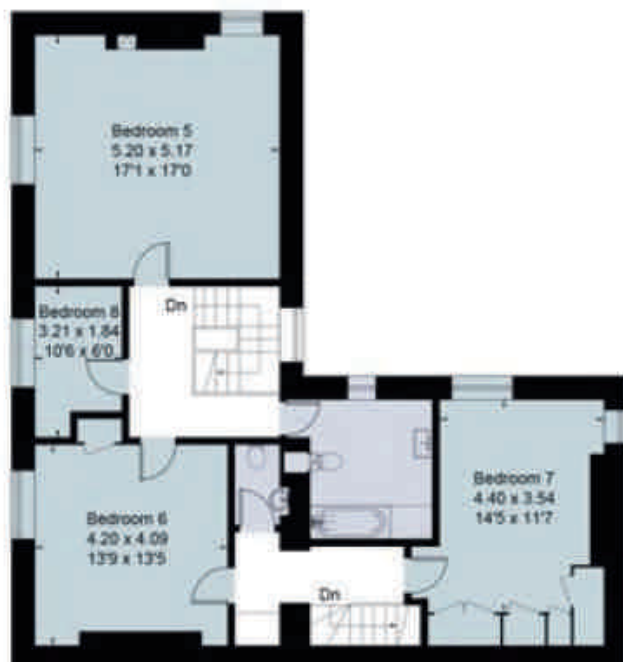




Ground Floor



First Floor



Second Floor

Marshwood

Lettings & Property Management

www.marshwoodlettings.co.uk

Marshwood Lettings & Property Management

2 White Hart Yard

Hogshill St.

Beaminster DT8 3AE

Tel. 07880 557 380