



38 Thames View, Blunsdon

Swindon

In Excess of £500,000

mcFarlane
property.com



38 Thames View

Blunsdon, Swindon

Introducing this captivating 4-bedroom detached house, nestled on a DESIRABLE END PLOT with a GARAGE and AMPLE PARKING, offering not only an exceptional living space but also the luxury of STUNNING COUNTRY VIEWS.

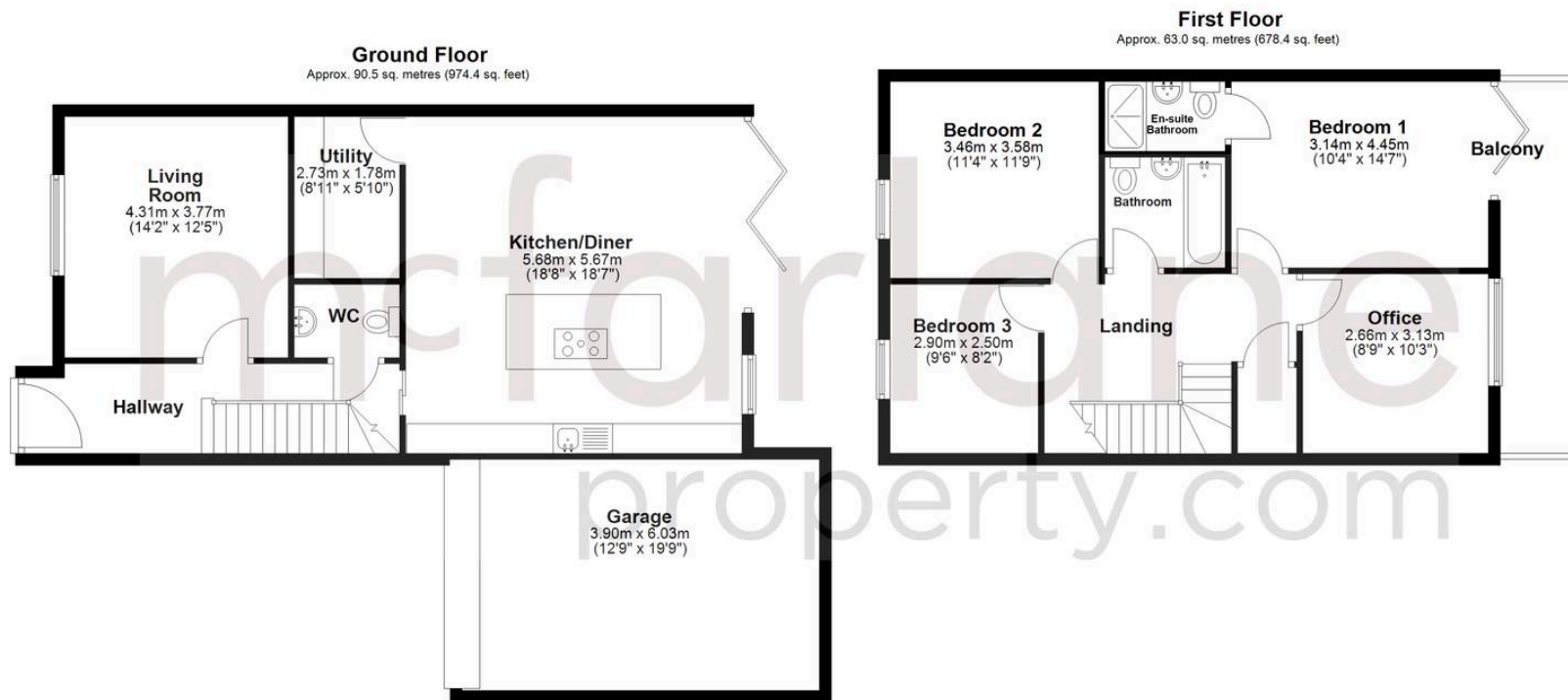
Step inside this FOUR BEDROOM DETACHED HOME, where you are greeted with a breathtaking OPEN PLAN KITCHEN/RECEPTION area, perfect for entertaining guests, complemented by a separate LIVING ROOM for those cosy evenings in. Practicality meets style with a handy UTILITY ROOM and WC on the ground floor.

The first floor boasts an ENSUITE to BEDROOM ONE, adding a touch of luxury, while the rest of the household can enjoy the well-appointed FAMILY BATHROOM. For those seeking a tranquil escape, the REAR BALCONY, with access from BEDROOM ONE, offers a private outdoor space to unwind. Benefit from the peace of mind that comes with the REMAINDER OF NHBC WARRANTY, knowing that quality and protection are at the forefront. Situated in the sought-after BLUNSDON LOCATION, within the prestigious Backhouse development, revel in the panoramic views over the former golf course.

The heart of the home is the large central KITCHEN ISLAND, ideal for culinary enthusiasts, and enhanced by premium built-in appliances for a seamless cooking experience. Bring the outdoors in with the bi-fold doors that open from the kitchen/reception area to the garden, creating a harmonious flow between indoor and outdoor living spaces.







Total area: approx. 153.5 sq. metres (1652.8 sq. feet)

McFarlane Sales & Lettings

North Swindon, Redhouse Village Centre, Swindon – SN25 2FW

01793 296600 • swindon@mcfarlaneproperty.com • www.mcfarlaneproperty.com/