



## **2 Bedroom Riverside Apartment Kingston Riverside, Kingston Upon Thames. £820,000 Leasehold**

Double aspect 2 double bedroom riverside apartment set within the exclusive Kingston Riverside development on the banks of the Thames.

This wonderful apartment offers 1,081 sq ft of internal living space, which includes a spacious living/dining room, an open plan fully integrated kitchen.

Direct access to a full width balcony and views over the landscaped internal gardens, and the river Thames.

The principal bedroom boasts floor to ceiling fitted wardrobes and a luxury en-suite shower room.

There is a further double bedroom with its own private terrace and luxury bathroom.

Kingston Riverside is situated just a few minutes' walk from Kingston town centre, Royal Bushy Park and Kingston's Mainline Train Station with frequent trains to London Waterloo.

This property is offered to the market chain free, early viewing is highly recommended.

[WWW.STACKANDBONNER.COM](http://WWW.STACKANDBONNER.COM)

020 8547 1234

[sales@stackandbonner.com](mailto:sales@stackandbonner.com)

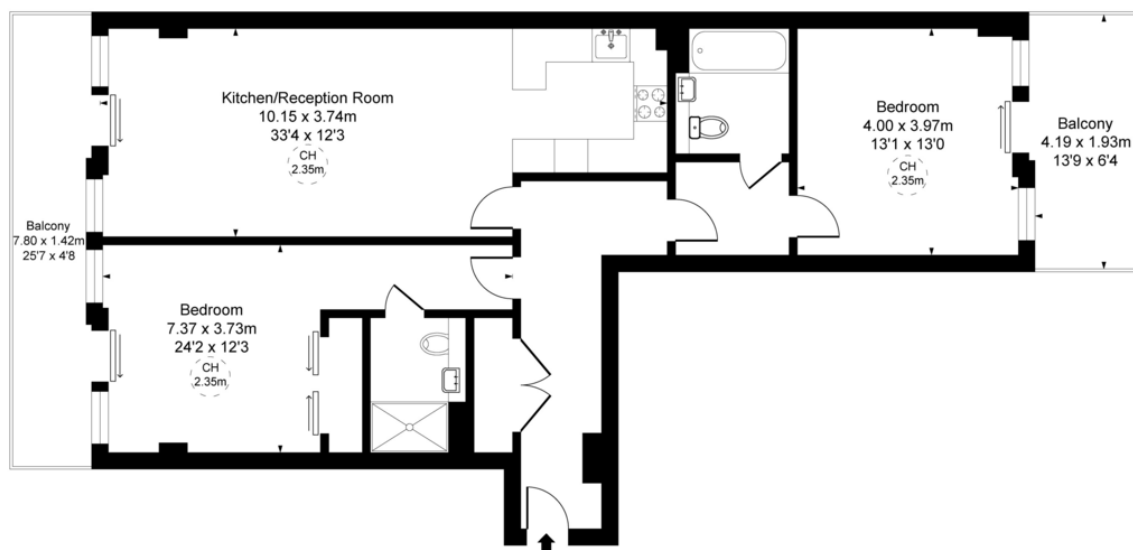




Admiralty Building, Kingston Riverside, KT2

Approximate Gross Internal Area  
100.45 sq m / 1081 sq ft

(CH = Ceiling Heights)



First Floor

This plan is not to scale. It is for guidance and not for valuation purposes.  
All measurements and areas are approximate only, and have been prepared in accordance with the current edition of the RICS Code of Measuring Practice.

- Double Aspect 2 Bedroom Riverside Apartment
- Fully Integrated Kitchen High Specification
- Open Plan spacious Living/Kitchen/Dining Room
- 2 Luxury Bathrooms
- 2 Private Balconies
- 1,053 sq ft of internal living space
- 1<sup>st</sup> Floor
- Stunning West Facing Park and River Views
- Concierge Service
- Lift Service
- Residents Roof Terrace and Internal Garden
- Chain Free
- Service Charge: £7,309.48 per annum
- Ground Rent: £400 per annum
- Lease 988 years remaining [approx]