



**Coopers**

**Coopers**

Aldbury Rise, Allesley Park, Coventry CV5 9JP

Guide Price £245,000





## Aldbury Rise

Allesley Park, Coventry

Pleasant semi det three bedroom home in popular location, with wide frontage and driveway to garage. Hall, two intercommunicating reception rooms, enlarged kitchen and first floor bathroom. No chain.

Council Tax band: B

Tenure: Freehold

EPC rating: D

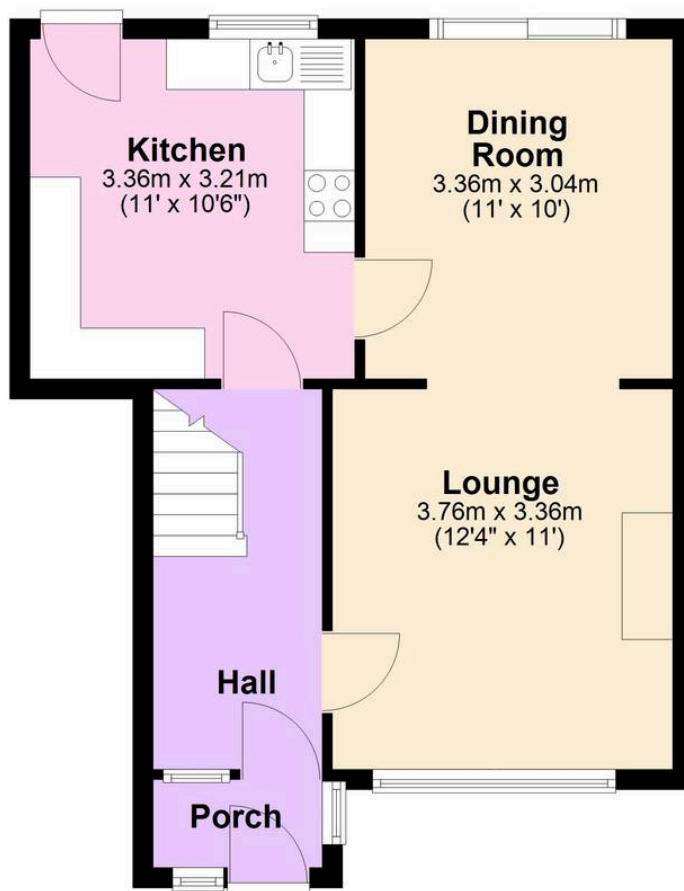
- Pleasant family home in popular location
- Two intercommunicating reception rooms and enlarged kitchen
- Three bedrooms and bathroom
- Direct drive to garage and rear garden
- No upward chain
- Only if asked: shower, cooker and gas fire are not working



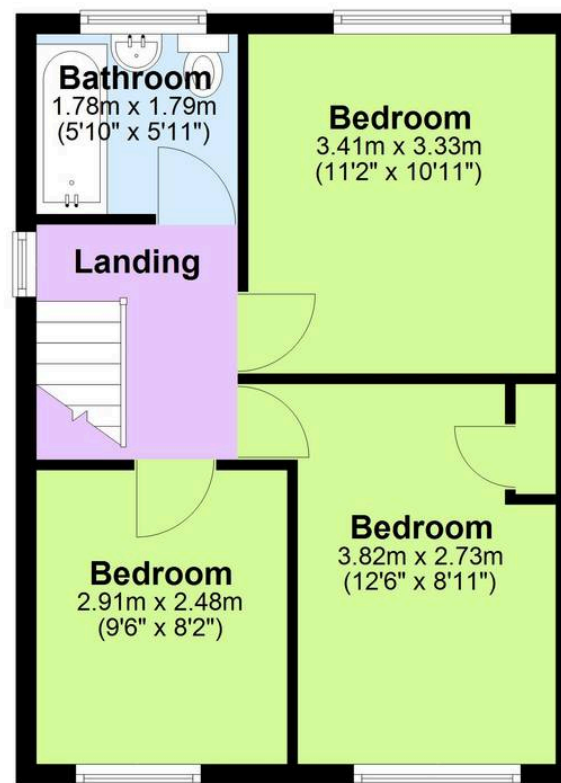




## Ground Floor



## First Floor



Total area: approx. 80.5 sq. metres (866.8 sq. feet)

"Floor plan measurements are approximate and are for illustrative purposes only. While every effort is made to ensure accuracy, no responsibility is taken for any error, omission, or misstatement. Do not scale from this plan.

Plan produced using PlanUp.□□

**Coopers Estate Agents**

Coopers, 22 New Union Street – CV1 2HN

024 7655 2841 • [sales@coopersestateagents.com](mailto:sales@coopersestateagents.com) • [www.coopersestateagents.com/](http://www.coopersestateagents.com/)

**Coopers**

Coopers Chartered Surveyors Ltd, 22 New Union Street, Coventry, West Midlands

CV1 2HN, 024 7655 2841, [sales@coopers-cov.com](mailto:sales@coopers-cov.com). Company Registration

Number: 6725089 / VAT number: 940 3555 34